

FELLOWSHIPS AND GRANTS

The ASF's program for support of study and research abroad is central to the Foundation's mission to develop cultural, academic, and professional ties between Americans and Scandinavians. With the support of awards ranging from \$2,500 to \$20,000, American and Scandinavian students, scholars, professionals, and artists engage in projects in a wide variety of disciplines. A significant trend, especially among Scandinavian fellows, has been increased participation in international relations programs as well as the related fields of environmental policy, international law, and global communication. The sciences (ranging from bioengineering to glaciology to pharmacology) and the arts (including dance, film production, and the visual arts) have also been popular areas of focus among fellows from both sides of the Atlantic. During the 2001-02 academic year total fellowship and grant funding reached nearly \$600,000, enabling 69 American and Scandinavian fellows to pursue their research, studies, and creative projects abroad. And during 2002-03, over \$620,000 in funding was approved for 64 fellows from the U.S. and five Nordic countries.

The last two years have also seen continued vitality in the Foundation's Visiting Lectureship Program, with three American academic institutions chosen to host an ASF lecturer. Indiana University received a grant to host Dr. Per Nordahl (Umeå University, Sweden) during the fall 2001 semester; Luther College hosted Dr. Øyvind Gulliksen (Telemark College, Norway) during the spring 2002 semester; and the University of Arizona's James E. Rogers College of Law hosted Dr. Ånde Somby (University of Tromsø, Norway) during the spring 2003 semester. All three lecturers taught courses at their host institutions and also traveled extensively, speaking at universities, conferences, and other public venues across the country.

For any international exchange program, a review of the past two years sadly must include note of September 11th and the immediate after-effect of fear regarding travel and living abroad. Fortunately, the vast majority of 2001-02 fellows carried out their programs without interruption, and since 9/11, application numbers have rebounded significantly in the American program as well as in most of the Nordic. Indeed, in early 2003 the ASF Board of Trustees approved a record level of funding, including a total of just under \$700,000 for 69 new American and Scandinavian fellowship and grant candidates, as well as three new Visiting Lectureship appointments for the 2003-04 academic year. Information on these awards will be included in the next Annual Report.

ASF fellowships and grants are given towards study and research at the graduate, post-graduate or professional level. Projects may be from a few weeks to a full year in length, with award amounts ranging from \$1,000 to \$20,000. Applications to the American competition have an annual deadline of November 1. The application process for the Scandinavian competitions are administered directly by the ASF's sister organizations in the Nordic countries, with each organization establishing its own deadline.

Fellows 2001-02

Fellows From Denmark

Candidates recommended by The Denmark-America Foundation (Danmark-Amerika Fondet), Copenhagen

Alstrup, Dorthe, to the Rhode Island School of Design M.F.A.-directed study, photography and video. Carl G. and Rikke Fredriksen Barth Fund, \$3,000; Henrik Kauffmann Fund, \$4,300.

Boutrup, Jens Svane, to Brooklyn College/City College of New York M.A.-directed study, theater studies. Henrik Kauffmann Fund, \$7,300.

Hamborg, Rune, to the University of the Pacific Master of Laws-directed study. Helen Lee and Emil Lassen Fund, \$7,300.

Schrøder, Vibeke, to the Cranbrook Academy of Art M.Architecture-directed study. Helen Lee and Emil Lassen Fund, \$6,200; Hans K. Lorentzen Fund, \$1,100.

Vogelsang, Peter, to North Park University Graduate-level research, history. Hans K. Lorentzen Fund, \$6,900; Henrik Kauffmann Fund, \$400.

Fellows To Denmark

Adams, Noel, from Olympic College Post-doctoral research, philosophy, Kierkegaard Research Center. Hans K. Lorentzen Fund, \$3,000.

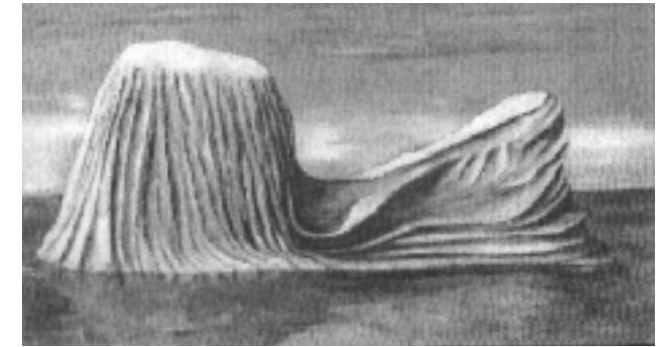
Brancaforte, Elio, from Tulane University Post-doctoral research, comparative literature, The Royal Library. Henrik Kauffmann Fund, \$3,000.

Kramer, Nathaniel, from the University of California/Los Angeles Ph.D.-directed research, Scandinavian literature, The University of Copenhagen and the Kierkegaard Research Center. Former Fellows Fund, \$7,000; Carol and Hans Christian Sonne Fund, \$5,000; Carl G. and Rikke Fredriksen Barth Fund, \$2,000; Henrik Kauffmann Fund, \$2,000; Helen Lee and Emil Lassen Fund, \$2,000.

Petrides, Olivia, from the School of the Art Institute of Chicago Visual arts: oil painting, sites in Greenland. Henrik Kauffmann Fund, \$3,000.

Thomas, William, from the University of Pittsburgh Post-doctoral research, sociology, National Library of Education. Henrik Kauffmann Fund, \$3,000.

Young, James, Musician, Boston, MA Music: recorder performance, Carl Nielsen Academy of Music. Helen Lee and Emil Lassen Fund, \$10,000; Sven Bernhard Fund, \$4,000.



Fellows From Finland

Candidates recommended by The League of Finnish-American Societies (Suomi-Amerikka Yhdistysten Liitto), Helsinki

Kujansivu, Heikki, to the State University of New York/Binghamton Ph.D.-directed study, comparative literature. Martha and Jack McFall Fund, \$1,000; Carl G. and Rikke Fredriksen Barth Fund, \$1,000.

Nordman, Sari, to New York University M.F.A.-directed study, dance. Thor and Saimi Soderholm Fund, \$5,000.

Salenius, Sirpa, to the New York Public Library Ph.D.-directed research, American literature. Martha and Jack McFall Fund, \$3,000.

Siukonen, Heli, to the University of Louisville J.D.-directed program. Finnish Fund, \$5,000.

Toivanen, Hannes, to the Georgia Institute of Technology Ph.D.-directed program, science, technology and society. Finnish Fund, \$4,000; Thor and Saimi Soderholm Fund, \$1,000.

Fellows To Finland

Knott, Karelyn, from the State University of New York/Stony Brook Post-doctoral research, evolutionary biology, University of Jyväskylä. Martha and Jack McFall Fund, \$3,000.

Fellows From Iceland

Candidates recommended by The Icelandic-American Society (Íslensk-ameríska félagid), Reykjavik

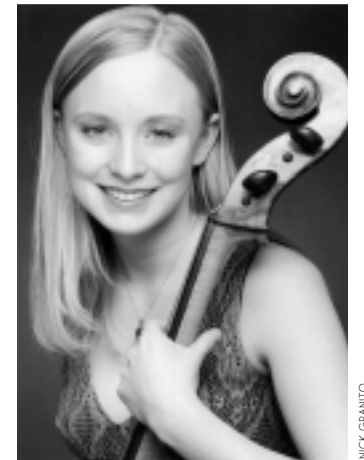
Gudmundsson, Skúli, to the University of Florida/Gainesville Ph.D.-directed study, physics. Thor Thors Memorial Fund, \$5,500.

Gunnarsson, Gunnar, to the University of California/Santa Barbara Ph.D.-directed study, mathematics. Thor Thors Memorial Fund, \$7,000.

Jónsson, Þórólfur, to Harvard University Master of Laws-directed study. Thor Thors Memorial Fund, \$7,000.

Kristinsdóttir, Fríða, to the Haystack Mountain School of Crafts Participation in 2001 program. Icelandic Crafts Fund, \$2,000.

Greenland Iceberg III (oil on canvas), by American Fellow to Greenland Olivia Petrides



Cellist Beata Söderberg from Sweden received her Masters of Music from the Manhattan School of Music.



American Fellow Clayton Tinsley pursued doctoral research in archaeology at the Steffansson Arctic Institute.

Sigfúsdóttir, Inga Dóra, to Pennsylvania State University
Ph.D.-directed study, sociology. Charles K. Willey Fund, \$5,500.

Thórisdóttir, Hulda, to New York University
Ph.D.-directed study, organizational psychology. Charles K. Willey Fund, \$5,500.

Thorsteinsdóttir, Tinna, to the New England Conservatory of Music
Performance certificate-directed study, piano. Thor Thors Special Contributions Fund, \$7,000.

Tryggvason, Thór, to Georgetown University
M.A.-directed study, communication, culture and technology. Thor Thors Memorial Fund, \$500; Thor Thors Special Contributions Fund, \$1,000; Charles K. Willey Fund, \$4,000.

Fellows To Iceland

Leppmann, Erika, from the Ohio University School of Art
Visual arts: photography and video. Thor Thors Memorial Fund, \$3,000.

Tinsley, Clayton, from the City College of New York
Ph.D.-directed research, archaeology, the Steffansson Arctic Institute and the Greenland Research Center, National Museum of Denmark. Thor Thors Memorial Fund, \$16,000; Carl G. and Rikke Fredriksen Barth Fund, \$2,000.

Fellows From Norway

Candidates recommended by The Norway-America Association (Norge-Amerika Foreningen), Oslo

Egeberg, Halvor, to Johns Hopkins University
M.International Relations-directed study. Andrew E. and G. Norman Wigeland Fund, \$12,000.

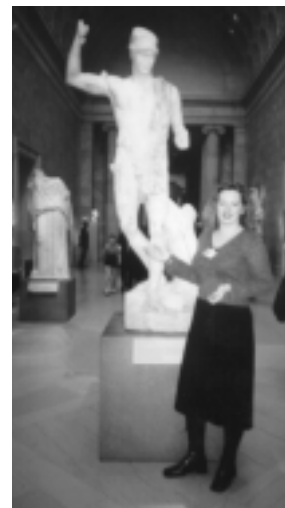
Gabrielsen, Trond, to Columbia University
M.International Affairs-directed study. Johan Jørgen Holst Award, Andrew E. and G. Norman Wigeland Fund, \$20,000.

Grande, Per, to Stanford University
Ph.D.-directed study, theology. Andrew E. and G. Norman Wigeland Fund, \$4,000.

Holmemo, Camilla, to Johns Hopkins University
M.International Relations-directed study. Andrew E. and G. Norman Wigeland Fund, \$10,000.

Karlsen, Pål, to New York University
M.A.-directed study, psychology. Andrew E. and G. Norman Wigeland Fund, \$6,000.

Kroksnes, Andrea, to the State University of New York/Stony Brook



Norwegian Fellow Therese Sjøvoll obtained her Masters in art history from Columbia University.

Ph.D.-directed study, art history. Andrew E. and G. Norman Wigeland Fund, \$7,300.

Nøra, Jan Erik, to American University
M.A.-directed study, public communication. Andrew E. and G. Norman Wigeland Fund, \$3,000.

Platou, Jeannette, to Columbia University
M.S.-directed program, journalism. Andrew E. and G. Norman Wigeland Fund, \$15,000.

Sjøvoll, Therese, to Columbia University
M.A.-directed study, art history. Andrew E. and G. Norman Wigeland Fund, \$14,000.

Sommerhein, Geir, to the University of California/Berkeley
M.B.A.-directed study. King Olav V Fund, \$10,000; Sather Fund, \$8,000.

Strand, Ivar, to Johns Hopkins University
M.A.-directed study, policy studies. King Haakon Fund, \$10,000; Andrew E. and G. Norman Wigeland Fund, \$3,000.

Strugstad, Evy, to Yeshiva University
Ph.D.-directed study, clinical psychology. Andrew E. and G. Norman Wigeland Fund, \$15,000.

Teig, Annika, to Columbia University
M.S.-directed study, historic preservation. Mathilde Aas Fund, \$20,000.

Vedde, Fride, to Columbia University
M.F.A.-directed study, film. Andrew E. and G. Norman Wigeland Fund, \$13,000.

Wilhelmsen, Carine, to Columbia University
M.International Affairs-directed study. Andrew E. and G. Norman Wigeland Fund, \$20,000.

Professional Development Grants

Aase, Marina, Teacher, Nome Community College for Adults
Professional research in social pedagogy, with a focus on second language acquisition, Hudson County Community College. Andrew E. and G. Norman Wigeland Fund, \$5,000.

Einarsson, Gardar Eide, Artist, Oslo
Participation in the Independent Study Program, Whitney Museum of American Art. Andrew E. and G. Norman Wigeland Fund, \$5,000.

Stokka, Elisa, Pastor, Oslo
Graduate-level study in clinical pastoral education, University of Iowa. Andrew E. and G. Norman Wigeland Fund, \$4,000.

Fellows To Norway

Kovalev, Roman, from the University of Minnesota
Ph.D.-directed research, medieval history, Crown Princess Märtha Friendship Fund, \$3,000.

Nunnally, Tiina, Translator, Seattle, WA
Translation research: Sigrid Undset, National Library. Crown Princess Märtha Friendship Fund, \$3,000.

Oxfeldt, Elisabeth, from the University of California/Berkeley

Ph.D.-directed research, 19th-century Danish and Norwegian literature, National Library, Oslo, and the Royal Library, Copenhagen. Crown Princess Märtha Friendship Fund, \$2,000; Hans K. Lorentzen Fund, \$1,000.

Reese, Scott, from Xavier University of Louisiana
Post-doctoral research, Islamic history, University of Bergen. King Olav V Fund, \$3,000.

Risley, Kristin, from Ohio State University
Ph.D.-directed research, Norwegian-American literature, University of Oslo and the National Library. Crown Princess Märtha Friendship Fund, \$3,000.

Fellows From Sweden

Candidates recommended by The Sweden-America Foundation (Sverige-Amerika Stiftelsen), Stockholm

Adolfson, Maria, to the Burnham Institute, University of California/San Diego
Ph.D.-directed study, bioengineering. Bernadotte Fund, \$7,000; Thord-Gray Memorial Fund, \$12,000.

Blix, Göran, to Columbia University
Ph.D.-directed study, French literature. Thord-Gray Memorial Fund, \$6,000.

Creutz, Andrea, to the Pratt Institute
M.F.A.-directed study, fine arts. Thord-Gray Memorial Fund, \$19,000.

Emanuelsson, Ingrid, to Columbia University
M.A.-directed program, music and music education. Thord-Gray Memorial Fund, \$15,000.

Eriksson, Tom, to the Lawrence Berkeley National Laboratory, University of California/Berkeley
Post-doctoral research, chemistry. Håkon Björnström Steffansson Scholarship Fund-Uppsala University, \$10,000; Thord-Gray Memorial Fund, \$5,000.

Haux, Caroline, to Columbia University
Ph.D.-level research, comparative literature. Thord-Gray Memorial Fund, \$2,500.

Hulting, Sandra, to Iowa State University
M.S.-directed study, statistics. Thord-Gray Memorial Fund, \$12,000.

Käll, Louisa, to Clark University
Ph.D.-directed study, women's studies. Thord-Gray Memorial Fund, \$15,000.

Karlöf, Lars, to the University of Washington
Ph.D.-directed study, glaciology. Marcus and Amalia Wallenberg Fund, \$7,000.

Karlsson, Åsa, to the University of California/Davis
Ph.D.-directed study, pharmacology and toxicology. Thord-Gray Memorial Fund, \$12,000.

Olausson, Peter, to Yale University
Post-doctoral research, pharmacology. Håkon Björnström Steffansson Scholarship Fund-Sweden-America Foundation, \$4,000; Thord-Gray Memorial Fund, \$4,000.

Rosenbach, Eva, to the University of Alabama/Huntsville
Ph.D.-directed study, materials science. Thord-Gray Memorial Fund, \$5,000.

Söderberg, Beata, to the Manhattan School of Music
M.Music-directed study, cello performance. Marcus and Amalia Wallenberg Fund, \$19,000.

Fellows To Sweden

Coates, Gary, from Kansas State University
Post-graduate research, architecture, Nyrén Architects. Thord-Gray Memorial Fund, \$3,000.

Hughes, Sarah, Photographer, San Francisco, CA
Visual arts: photography. Thord-Gray Memorial Fund, \$3,000.

Kaminsky, David, from Harvard University
Ph.D.-directed research, ethnomusicology, Göteborg University. Thord-Gray Memorial Fund, \$18,000.

Roland-Silverstein, Kathleen, from the University of Southern California
Music: vocal performance, Royal University College of Music. Thord-Gray Memorial Fund, \$4,000.

Surkan, Pamela, from the Harvard School of Public Health
Ph.D.-directed research, public health, Karolinska Institute. Thord-Gray Memorial Fund, \$18,000.

Udvardy, Monica, from the University of Kentucky
Post-doctoral research, cultural anthropology: East African women's organizations, Uppsala University and the Archives of the Swedish Lutheran Church. Thord-Gray Memorial Fund, \$3,000.

Visiting Lectureships

Indiana University
Department of West European Studies
in support of hosting Dr. Per Nordahl (Department of Historical Studies, Umeå University) as a visiting lecturer, Fall Semester 2001. Thord-Gray Memorial Fund, \$20,000.

Luther College
Department of History
in support of hosting Dr. Øyvind Gulliksen (Department of American Studies, Telemark College) as a visiting professor, Spring Semester 2002. Andrew E. and G. Norman Wigeland Fund, \$20,000.

Translation Prizes

The ASF recognizes the finest translations of prose or poetry by Nordic authors born after 1800 in an annual competition, with a deadline each year of June 1.

Roughton, Philip (Boulder, CO)
First Prize in the ASF 2001 Translation Competition for his translation of Halldór Laxness' *Iceland's Bell*. Thor Thors Memorial Fund, \$2,000.

Phillips, Patrick (Jekyll Island, GA)
Leif and Inger Sjöberg Prize (Honorable Mention) in the ASF 2001 Translation Competition for his translation of Paul la Cour's *Selected Poems*. Leif and Inger Sjöberg Fund, \$1,000.



Lars Karlöf of Sweden conducted doctoral research in glaciology at the University of Washington.

Fellows 2002-03

Fellows From Denmark

Candidates recommended by The Denmark-America Foundation (Danmark-Amerika Fondet), Copenhagen

Gregersen, Christian, to Cornell University
Master of Laws-directed study. Henrik Kauffmann Fund, \$9,000.

Mantoni, Sanne, to the University of California/Berkeley
M.A.-level coursework, organizational psychology. Henrik Kauffmann Fund, \$9,000.

Melchiorson, Heidi, to the University of California/Davis
Master of Laws-directed study. Helen Lee and Emil Lassen Fund, \$9,000.

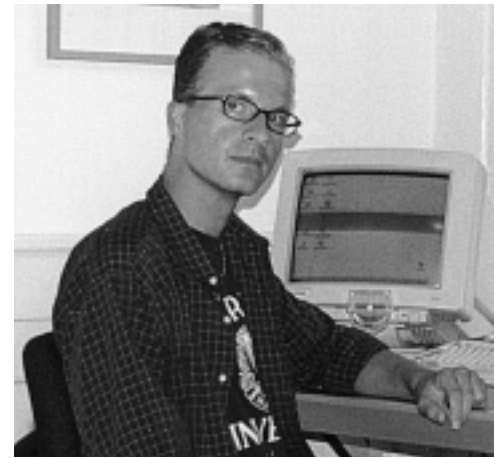
Nissen, Louise, to Harvard University
Nieman Fellowship Program for Journalists. Carl G. and Rikke Fredriksen Barth Fund, \$3,000; Hans K. Lorentzen Fund, \$6,000.

Sølling, Peter, to Tufts University
M.International Affairs-directed study. Henrik Kauffmann Fund, \$2,000; Helen Lee and Emil Lassen Fund, \$7,000.

Määttä, Simo, to the University of California/Berkeley
Ph.D.-directed study, French linguistics. Carl G. and Rikke Fredriksen Barth Fund, \$3,000; Jack and Martha McFall Fund, \$2,000.

Peltoniemi, Janne, to the University of California/San Diego
Ph.D.-directed research, accounting and finance. Finnish Fund, \$4,000.

Rantala, Riitta, to the University of South Carolina
M.Human Resources-directed study. Finnish Fund, \$7,000.



American Fellow Rick Furtak conducted doctoral research in philosophy at the Kierkegaard Research Center, Denmark.

Fellows To Denmark

DeWitte, Sharon, from Pennsylvania State University
Ph.D.-directed research, biological anthropology, Odense University. Amanda C. Roelson Fund, \$6,000; Carol and Hans Christian Sonne Fund, \$6,000; Hans K. Lorentzen Fund, \$4,000.

Furtak, Rick, from the University of Chicago
Ph.D.-directed research, philosophy, Kierkegaard Research Center. Former Fellows Fund, \$5,000; Henrik Kauffmann Fund, \$3,000.

Heister, Lara, from the University of California/Davis
Ph.D.-directed research, geology, Danish Lithosphere Center. Helen Lee and Emil Lassen Fund, \$3,500; Former Fellows Fund, \$5,000.

Lee, Angela, musician from Riverdale, NY
Music: cello performance. Amanda C. Roelson Fund, \$13,500; Sven Bernhard Fund, \$4,000.

Fellows From Finland

Candidates recommended by The League of Finnish-American Societies (Suomi-Amerikka Yhdistysten Liitto), Helsinki

Anttila, Hanna, to the School of Visual Arts
M.F.A.-directed study, photography. Thor and Saimi Soderholm Fund, \$5,000.

Hiltonen, Tuomas, to Columbia University
M.F.A.-directed study, theater. Thor and Saimie Soderholm Fund, \$3,000; Jack and Martha McFall Fund, \$2,000.

Fellows To Finland

Katchadourian, Nina, from Brown University
Visual arts: installation art. Carl G. and Rikke Fredriksen Barth Fund, \$3,000.

Lowit, Daniel, from the University of Helsinki
Ph.D.-directed study, historical linguistics, University of Helsinki. Finnish Fund, \$9,500; Thor and Saimi Soderholm Fund, \$8,000.

Fellows From Iceland

Candidates recommended by The Icelandic-American Society (Íslensk-ameríska félagid), Reykjavik

Einarsson, Jón Ívar, to Harvard University
M.Public Health-directed study. Thor Thors Memorial Fund, \$5,000.

Ellingsen, Lotta, to Johns Hopkins University
Ph.D.-directed study, electrical engineering. Thor Thors Memorial Fund, \$7,000.

Jónsdóttir, Margrét, to Colorado State University
Ph.D.-directed study, mathematics. Thor Thors Special Contributions Fund, \$5,000.

Karlsson, Karl, to the University of Iowa
Ph.D.-directed study, psychology. Thor Thors Special Contributions Fund, \$3,000.

Pálsson, Vidar, to the University of California/Berkeley
Ph.D.-directed study, history. Thor Thors Memorial Fund, \$7,000.

Ragnarsson, Birgir, to Harvard University
Master of Laws-directed study. Charles K. Willey Fund, \$5,000.

Saemundsson, Álfheidur, to Yale University
M.B.A.-directed study. Charles K. Willey Fund, \$3,000.

Sigurðsson, Jóhann, to New York University
Master of Laws-directed study. Charles K. Willey Fund, \$5,000.

Sveinsson, Thorvardur, to Harvard University
M.S.-directed study, electrical engineering. Thor Thors Memorial Fund, \$5,000.

Vilhjálmsson, Björn, to the University of Wisconsin/Madison
Ph.D.-directed study, comparative literature. Charles K. Willey Fund, \$7,000.

Fellows To Iceland

Kaplan, Merrill, from the University of California/Berkeley
Ph.D.-directed research, Old Norse literature, Árni Magnússon Institute. Thor Thors Memorial Fund, \$18,000.

Tollefson, Kristin, artist from Bainbridge Island, WA
Visual arts: mixed media. Thor Thors Memorial Fund, \$3,000.

Fellows From Norway

Candidates recommended by The Norway-America Association (Norge-Amerika Foreningen), Oslo

Aasland, Sigrun, to Johns Hopkins University
M.International Relations-directed study. Mathilde Aas Memorial Fund, \$12,000

Dahlberg, Sylvia, to the University of Georgia
M.A.-level research, pharmacology. Andrew E. and G. Norman Wigeland Fund, \$3,000.

Eliassen, Tore, to the University of California/San Diego
M.International Relations-directed study. Andrew E. and G. Norman Wigeland Fund, \$20,000.

Hope, Linda, to Gallaudet University
M.A.-directed study, deaf education. Andrew E. and G. Norman Wigeland Fund, \$15,000.

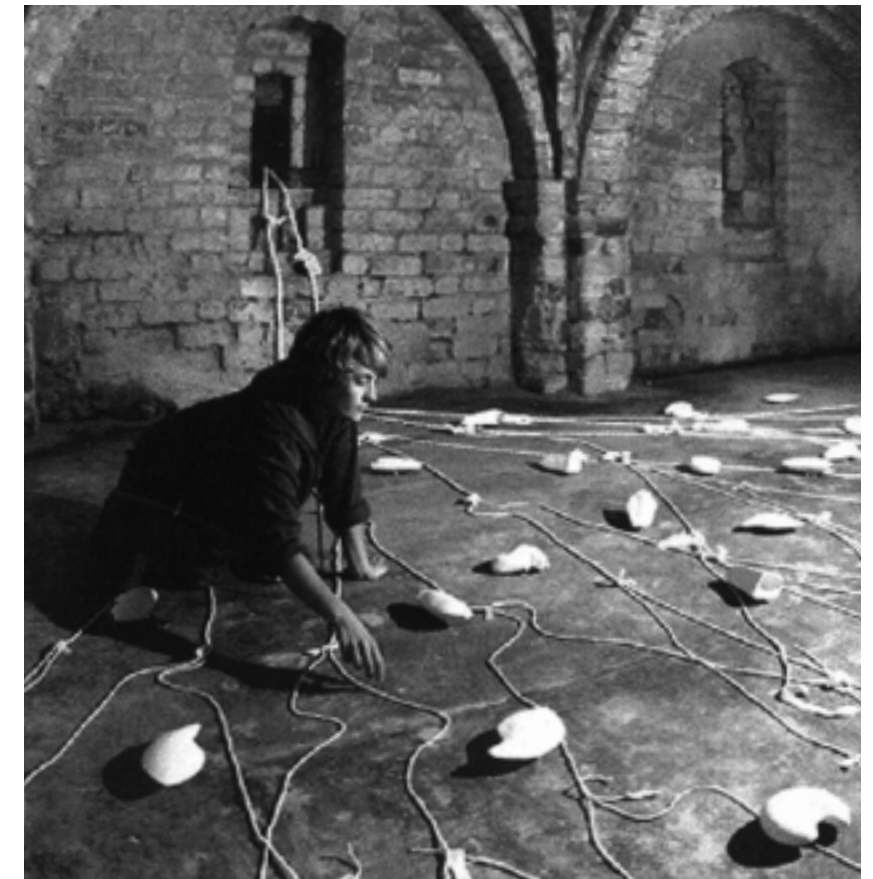
Indresand, Hege, to the University of California/Davis
M.S.-directed study, analytical chemistry. Haakon Styri Fund, \$18,000.

Jeppsson, Helle, to Georgetown University
M.A.-directed study, Latin America studies. King Haakon VII Birthday Fund, \$10,000.

Kjøk, Aashild, to Columbia University
M.International Affairs-directed study. Johan Jørgen Holst Award, Andrew E. and G. Norman Wigeland Fund, \$15,000.

Maridal, Jan, to Baylor University
M.B.A.-directed study. Andrew E. and G. Norman Wigeland Fund, \$10,000.

Myhre, Caroline, to Alliant International University
Ph.D.-directed study, clinical psychology. King Olav V Fund, \$12,000.



Swedish installation artist Maria Alwmark studied at the San Francisco Art Institute.

Raknes, Ketil, to Georgetown University
M.A.-directed study, communication, culture and technology. Andrew E. and G. Norman Wigeland Fund, \$9,000.

Sjøvoll, Therese, to Columbia University
Ph.D.-directed study, art history. Andrew E. and G. Norman Wigeland Fund, \$20,000.

Stensveen, Øyvind, to Pace University
M.B.A.-directed study. Andrew E. and G. Norman Wigeland Fund, \$10,000.

Vethe, Anders, to Georgetown University
M.S.-directed study, foreign service. Andrew E. and G. Norman Wigeland Fund, \$12,000.

Wee, Asbjørn, to Johns Hopkins University
M.International Relations-directed study. Andrew E. and G. Norman Wigeland Fund, \$15,000.

Fellows To Norway

Dubois, Ia, from the University of Washington
Post-doctoral research, cultural studies, Nordic Institute of Women's Studies and Gender Research. King Olav V Fund, \$3,000.

May, Gergana, from the University of Washington
Ph.D.-directed research, Norwegian literature, Center for Ibsen Studies. Crown Princess Märtha Friendship Fund, \$10,000; King Olav V Fund, \$2,500.



DANIEL MASTO

American Fellow Angela Lee studied cello performance in Copenhagen.



American Fellow Ursula Peterson conducted field research in Sweden on endangered bird species.

Fellows From Sweden

Candidates recommended by The Sweden-America Foundation (Sverige-Amerika Stiftelsen), Stockholm

Alwmark, Maria, to the San Francisco Art Institute
M.F.A.-directed study, new genres. Bernadotte Fund, \$7,000; Thord-Gray Memorial Fund, \$14,000.

Csiki, Krisztina, to Johns Hopkins University
M.International Relations-directed study. Håkon Björnström Steffanson Scholarship Fund – Sweden-America Foundation, \$3,000; Thord-Gray Memorial Fund, \$18,000.

Fransson, Martin, to Princeton University
Ph.D.-directed study, chemistry. Marcus and Amalia Wallenberg Fund, \$20,000.

Hedlund, Kajsa, to Columbia University
M.A.-directed study, education. Thord-Gray Memorial Fund, \$15,000.

Jordenö, Sara, to the University of California/Los Angeles
M.F.A.-directed study, interdisciplinary studio. Thord-Gray Memorial Fund, \$19,000.

Lejon, Kjell, to Westmont College, California
Post-doctoral research, theology. Thord-Gray Memorial Fund, \$6,000.

Parsi, Trita, to Johns Hopkins University
Ph.D.-directed study, international relations. Håkon Björnström Steffanson Scholarship Fund – Uppsala University, \$7,000; Thord-Gray Memorial Fund, \$3,000.

Sasvari, Anette, to Columbia University
M. International Affairs-directed study. Marcus and Amalia Wallenberg Fund, \$10,000; Thord-Gray Memorial Fund, \$11,000.

Wijkmark, Johan, to Pennsylvania State University/Berks-Lehigh Valley
Ph.D.-directed research, American literature. Thord-Gray Memorial Fund, \$15,000.

Fellows To Sweden

Adams, John, from the University of South Carolina
Post-doctoral research, social anthropology, Umeå University. Thord-Gray Memorial Fund, \$2,500.

Downie, David, from Columbia University
Post-doctoral research, environmental politics, Stockholm Environment Institute. Thord-Gray Memorial Fund, \$3,000.

Frerichs, Jeanne, from the University of Iowa
Ph.D.-directed research, anthropology, University of Stockholm. Thord-Gray Memorial Fund, \$18,000.

Inbody, Catharine, from Texas A&M University
M.A.-directed research, nautical archaeology, the Vasa Museum. Thord-Gray Memorial Fund, \$2,500.

Jensen, Britta, from Oxford University
Ph.D.-directed research, linguistics, Lund University. Thord-Gray Memorial Fund, \$14,500.

Kasakoff, Alice Bee, from the University of South Carolina
Post-doctoral research, social anthropology, Umeå University. Thord-Gray Memorial Fund, \$2,500.

Keller, Tony, from the University of Vermont
Post-doctoral research, orthopaedic biomechanics, Göteborg University. Thord-Gray Memorial Fund, \$3,000.

Levy, Janet, from the University of North Carolina
Post-doctoral research, anthropology, National Museum of Finland and Åjtte, Swedish Fells and Sámi Museum. Thord-Gray Memorial Fund, \$2000.

Owen, Bronwen, from the University of Colorado
Ph.D.-directed research, soil studies, fieldwork throughout Sweden. Thord-Gray Memorial Fund, \$3,000.

Petersen, Ursula, from the Wisconsin Dept. of Agriculture, Trade & Consumer Protection
Professional research, ecology, Royal Swedish Academy of Science. Thord-Gray Memorial Fund, \$3,000.

Tucker, Michael, from the University of California/Berkeley
Post-doctoral research, electrochemistry, Uppsala University. John G. Bergquist Fund, \$12,000; Swanson Fund, \$1,500.

Watson, Jennifer, from the University of Wisconsin/Milwaukee
Post-doctoral research, Swedish and German literature, Royal Library. Thord-Gray Memorial Fund, \$3,000.

Visiting Lectureships

University of Arizona
James E. Rogers College of Law, Indigenous Peoples Law and Policy Program
in support of hosting Dr. Ånde Somby (Center for Sámi Studies, University of Tromsø) as a visiting lecturer, Spring Semester 2003. Andrew E. and G. Norman Wigeland Fund, \$25,000.

Translation Prizes

Lesser, Rika
First Prize for her translation of *Mozart's Third Brain* by Swedish poet Göran Sonnevli. Thord-Gray Memorial Fund, \$2,000.

Katchadourian, Stina
Leif and Inger Sjöberg Prize (Honorable Mention) for her translation from the Finland Swedish of *After Spending a Night Among the Horses* by Tua Forsström. Leif and Inger Sjöberg Fund, \$1,000.