

# THE AMERICAN-SCANDINAVIAN FOUNDATION



BI-ANNUAL REPORT  
JULY 1, 2011 TO JUNE 30, 2013



The American-Scandinavian Foundation

# BI-ANNUAL REPORT

July 1, 2011 to June 30, 2013

The American-Scandinavian Foundation (ASF) serves as a vital educational and cultural link between the United States and the five Nordic countries: Denmark, Finland, Iceland, Norway, and Sweden. A publicly supported nonprofit organization, the Foundation fosters cultural understanding, provides a forum for the exchange of ideas, and sustains an extensive program of fellowships, grants, internships/training, publishing, and cultural events. Over 30,000 Scandinavians and Americans have participated in its exchange programs over the last century.

In October 2000, the ASF inaugurated Scandinavia House: The Nordic Center in America, its headquarters, where it presents a broad range of public programs furthering its mission to reinforce the strong relationships between the United States and the Nordic nations, honoring their shared values and appreciating their differences.

## Patrons

2011 - 2013

H.M. Queen Margrethe II  
of Denmark

H.E. Tarja Halonen  
President of Finland  
*until February, 2012*

H.E. Sauli Niinistö  
President of Finland  
*from March, 2012*

H.E. Ólafur Ragnar Grímsson  
President of Iceland

H.M. King Harald V  
of Norway

H.M. King Carl XVI Gustaf  
of Sweden

## Honorary Trustees

2011 - 2013

H.R.H. Princess Benedikte  
of Denmark

H.E. Martti Ahtisaari  
President of Finland, 1994-2000

H.E. Vigdís Finnbogadóttir  
President of Iceland, 1980-1996

H.H. Princess Märtha Louise  
of Norway

H.R.H. Crown Princess Victoria  
of Sweden

---

## Officers 2011 - 2012

Richard E. Oldenburg  
Co-Chairman

Edward E. Elson  
Vice Chairman for Denmark

Lena Björck Kaplan  
Vice Chairman for Sweden

Bernt Reitan  
Co-Chairman

Linda Nordberg  
Vice Chairman for Finland

Steven B. Peri,  
Vice Chairman for the United States

Bente Svensen Frantz  
Deputy Chairman

Kristjan T. Ragnarsson, MD  
Vice Chairman for Iceland

Christian R. Sonne  
Treasurer

Edward P. Gallagher  
President

Bård Bunaes  
Vice Chairman for Norway

Lynn Carter  
Executive Vice President and Secretary

## Officers 2012 - 2013

Bente Svensen Frantz  
Chairman

Aili Flint  
Vice Chairman for Finland

Linda Nordberg  
Vice Chairman for the United States

Bernt Reitan  
Deputy Chairman

Kristjan T. Ragnarsson, MD  
Vice Chairman for Iceland

Bård Bunaes  
Treasurer

Edward P. Gallagher  
President

Steven B. Peri  
Vice Chairman for Norway

Lynn Carter  
Executive Vice President and Secretary

Edward E. Elson  
Vice Chairman for Denmark

Monika Heimbold  
Vice Chairman for Sweden

# A NOTE FROM THE PRESIDENT

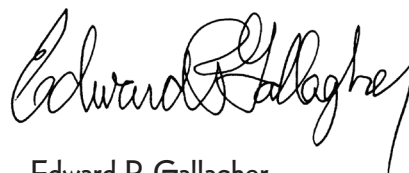
I am delighted to present this report which provides an overview of the programs and finances of the American-Scandinavian Foundation during the fiscal years 2012 and 2013 (July 1, 2011 to June 30, 2013).

This period was an especially active one for the ASF, as it marked the conclusion of our Centennial celebrations and the commencement of a new century for the organization. Officially chartered as an educational institution on March 16, 1911, The American-Scandinavian Foundation has since its beginning been devoted to furthering international understanding between the United States and the Nordic countries through educational and cultural exchange. Our Centennial was distinguished by a renewed commitment to this mission as evidenced by an unusually rich variety of special programs, many presented at Scandinavia House. These included three Centennial Exhibitions; a number of lectures by Nordic leaders in the arts and public affairs; special film and musical events; a major international symposium on Early Childhood Development; and a particular highlight, the Centennial Ball, held in the presence of the Nordic Heads of State and attended by 1,200 guests.

Additionally, during fiscal years 2012 and 2013, the ASF provided 145 students, scholars, and artists with important financial assistance, helping them to further their studies and work abroad, while 24 educational and arts organizations received public project grants. During the same period, we made it possible for 439 young Scandinavians to receive valuable on-the-job training through our J-1 Visa Internship/Training Program. Also, over 5,000 members, subscribers, and friends regularly read our illustrated journal, *Scandinavian Review*, itself now 99 years old, and countless thousands visited our websites.

In addition to special Centennial offerings, the ASF presented at Scandinavia House, more than 250 programs—films, concerts, lectures, language classes, and children’s activities—and was visited by more than a quarter of a million individuals.

It has been a unique, historic period, and I am grateful for the leadership and unflagging support of the ASF Trustees, as well as the dedicated commitment of our enormously hardworking staff which has made it all possible.



**Edward P. Gallagher**  
President

# ASF BOARD OF TRUSTEES

as of June 30, 2013

## EXECUTIVE TRUSTEES

### Charles B. Anderson

Senior Vice President, SKULD North America, Inc.

### Roger E. Anderson

Managing Partner, Hamilton Capital Partners

### Karl G. Andrén

Chairman and CEO (ret.), New York Cruise Lines, Inc.

### Bernt O. Bodal

Chairman and CEO, American Seafoods Group

### Victor B. Borge

Film Director

### Anders Brag

President, GARB Holdings LLC

### Bård E. Bunaes

President and CEO (ret.), GLOBAL Reinsurance Company of America  
Chairman of the Board, The American-Scandinavian Foundation, 2006-2009

### Grant Callow

Attorney, Law Office of William Grant Callow  
Honorary Danish Consul for Alaska

### Alpo Franssila Crane

Private Investor

### David E.R. Dangoor

Executive Vice President (ret.), Philip Morris International, Inc.  
Honorary Consul General of Sweden, New York

### Dr. Daphne Davidson

Vice Chairman, Scandinavian Seminar  
Attorney (private practice)

### Hon. Robin Chandler Duke

U.S. Ambassador to Norway, 2000-2001

### Sven Anders Ekernäs

Chairman & CEO, Hillswick Asset Management

### Inger McCabe Elliott

President, IME/LTD

### Hon. Edward E. Elson

U.S. Ambassador to Denmark, 1993-1998

### Michael A. Feirstein

Former Vice President and Corporate Counsel, Prudential Financial, Inc.

### Dr. Aili Flint

Head of the Finnish Program (ret.), Columbia University

### Bente Svensen Frantz

Chairman of the Board, The American-Scandinavian Foundation, 2012-Present

### Edward P. Gallagher

President, The American-Scandinavian-Foundation, 1996-Present

### Inger Gundersen Ginsberg

### Magnus Gustafsson

President, Atlantika, Inc.

### Paul Halme

Chair, Paloheimo Foundation

### Lisa Resling Halpern

Executive Vice President, Euro-Center USA

### Jesper Bo Hansen

Former Regional Managing Director, Americas TORM

### Monika Heibold, MSW

President, Heibold Foundation

### Kristin Holth

Executive Vice President & Global Head of Shipping, Offshore & Logistics, DNB Bank ASA

### Anders Iversen

Managing Director, Danske Markets

### Trond S. Jensen

President, Sigurd Jensen & Co.  
Owner, Chestnut Hill Farms  
Honorary Consul General for Norway, Florida

### Niels W. Johnsen

Chairman and CEO (ret.), International Shipholding Corporation

### Lena Björck Kaplan

President, The American-Scandinavian Foundation  
1989-1996

### Eugene V. Kokot, Esq.

Partner, Esanu, Katsky, Korins & Siger

### Kaarina Koskenalusta

CEO, Global Connections, Inc.

### Christina Lang Assael

Vice Chairman, The Assael Foundation

### Stefan Larsson

General Manager, The Americas, Scandinavian Airlines

### Hon. John L. Loeb, Jr.

U.S. Ambassador to Denmark, 1981-1983  
Chairman, John L. Loeb, Jr. Associates, Inc.

### Øivind Lorentzen III

CEO, SEACOR Normal Holdings Inc.

### Asbjørn R. Lunde

Attorney

### Carol Mack

### Helen W. Marx

Honorary Consul for Finland, New Jersey

### Michael S. Mathews

Managing Director, Westgate Capital Co.

### Lisbeth McCoy

### Linda Nordberg

Trustee, The Katonah Museum of Art

### Ólafur J. Ólafsson

Vice Chairman, Time Warner Digital Media

### Richard E. Oldenburg

Honorary Chairman (ret.), Sotheby's North America  
Co-Chairman of the Board, The American-Scandinavian Foundation, 2009-2012

### Hon. Lyndon L. Olson

U.S. Ambassador to Sweden, 1997-2001

### Barbro Osher

President, The Barbro Osher Pro Suecia Foundation  
Honorary Consul General of Sweden, San Francisco

### Steven B. Peri, Esq.

Executive Vice President & General Counsel, Glowpoint, Inc.

### Kristján T. Ragnarsson, M.D.

Lucy G. Moses Professor and Chairman, Department of Rehabilitation Medicine, Mount Sinai Medical Center  
Chairman of the Board, The American-Scandinavian Foundation, 2000-2003

### Lennard K. Rambusch, Esq.

Partner, Holland & Knight (ret.)

### Bernt Reitan

Executive Vice President, Alcoa (ret.)  
Group President, Alcoa Primary Products  
Co-Chairman of the Board, The American-Scandinavian Foundation, 2009-2012

### Luann Smith

President, Statoil North America Inc.

### Christian R. Sonne

General Partner, Tuxedo Park Associates  
Chairman of the Board, The American-Scandinavian Foundation, 2003-2006

### Bo Sonnichsen

CFO, Maersk Line - North America

### Henrik Steffensen

Executive Vice President, Nordea Bank, New York Branch

### Vibeke Steineger

Tour Manger / Travel Consultant, Steineger & Krogh, TIDE Travel

### James M. Stewart

### Lise Stolt-Nielsen

### Inger M. Tallaksen

General Manager, Norwegian-American Chamber of Commerce, Inc.

**Thor Thors, Jr.**  
Vice President (ret.), United States Trust Company of New York

**John Thuestad**  
Business Area President, Sapa Profiles and Sapa Profiles Europe

**Jón Tómasson**  
Chairman and CEO, Vinland Capital Investments

**Agnes Ahlander Turner**  
Literary Scout, Marie B. Campbell Associates

**Liv Ullmann**  
Actor/Director

**Thórunn Wathne**

**Robert B. Willumstad**  
Former President and COO, Citigroup

**Arthur Zeckendorf**  
Co-Chairman, Brown Harris Stevens LLC Group

## ADVISORY TRUSTEES

**Tor B. Arneberg**  
Senior Advisor, Nightingale & Associates, Inc.

**Hon. Barbara Barrett**  
President & CEO, Triple Creek Ranch U.S. Ambassador to Finland, 2008-2009

**Dr. Patricia G. Berman**  
Professor of Art, Wellesley College Professor II, University of Oslo

**Hon. Stuart A. Bernstein**  
Chairman, Bernstein Companies U.S. Ambassador to Denmark, 2001-2005

**Hon. William McCormick Blair, Jr.**  
Attorney U.S. Ambassador to Denmark, 1961-1964

**Hon. Charles E. Cobb, Jr.**  
Chairman and CEO, Cobb Partners U.S. Ambassador to Iceland, 1989-1992

**Lars W. Colliander**  
Berner Brothers, Inc

**Albert R. Dowden**  
President and CEO (ret.), Volvo Group North America, Inc. Chairman, The American-Scandinavian Foundation, 1995-2000

**Craig Dykers**  
Co-Founder, Snøhetta

**Hon. Charles S. Haight, Jr.**  
U.S. District Judge for the District of Connecticut Chairman, The American-Scandinavian Foundation, 1971-1976

**Dr. Nils Hasselmo**  
President Emeritus, University of Minnesota President (ret.), The Association of American Universities

**Dr. Peter F. Krogh**  
Dean Emeritus, Edmund A. Walsh School of Foreign Service, Georgetown University

**Bo W. Long**  
Area Vice President, The Americas (ret.), FINNAIR

**Øivind Lorentzen, Jr.**  
Chairman of the Board, The American-Scandinavian Foundation, 1988-1991

**Dr. Rose-Marie Oster**  
Professor of Germanic Studies, University of Maryland

**Ruth B. Perkins**  
**Hilppa A.K. Roby**  
Former Conference Manager, The United Nations

**Sigurjón Sighvatsson**  
Owner and Principal, Palomar Pictures

**Robert Storr**  
Dean, Yale School of Art

**Helgi Tómasson**  
Artistic Director, San Francisco Ballet

**Torsten N. Wiesel**  
President Emeritus, The Rockefeller University

**Hon. Michael M. Wood**  
Chairman, Redwood Investments LLC U.S. Ambassador to Sweden, 2006-2009

## OVERSEAS ADVISORY TRUSTEES

**Mr. Magnús Bjarnason**  
Executive Vice President - Marketing and Business Development, Landsvirkjun ICELAND

**Rune Bjerke**  
President and CEO, DNB NOR AS NORWAY

**Pontus Bonnier**  
President, AB Boninvest Vice Chairman, Bonnier AB Board SWEDEN

**Svein Richard Brandtzæg**  
President and CEO, Norsk Hydro ASA NORWAY

**Klaus Thomas Cawén**  
Executive Vice President, KONE Corporation FINLAND

**Carl Gustaf Ehrnrooth**  
Geveles AB FINLAND

**Jane Erkko**  
Board Member, Sanoma WSOY FINLAND

**Jens P. Heyerdahl d.y.**  
Former Group CEO, Orkla ASA NORWAY

**Carl-Johan Howitz**  
Partner, Moltke-Leth Advokater DENMARK

**Jonas Kleberg**  
CEO, Soya Group SWEDEN

**Helge Lund**  
CEO, Statoil ASA NORWAY

**Jóhannes Nordal**  
Former Governor, Central Bank of Iceland ICELAND

**Jorma Ollila**  
Chairman (ret.), Nokia Corporation FINLAND

**Fritz Schur**  
Chamberlain, Consul General DENMARK

**Jón Sigurdsson**  
President and CEO (ret.), Nordic Investment Bank ICELAND

**Peter Sjöstrand**  
Chairman, Gambro AB Chairman, Innate Pharmaceuticals AB SWEDEN

**Fríðrik Sophusson**  
Chairman, Islandsbanki Former President & CEO, Landsvirkjun Former Minister of Finance ICELAND

**Nadia Stolt-Nielsen**  
NORWAY

**Roger Talermo**  
President and CEO (ret.), Amer Group Plc FINLAND

**Ane Mærsk Mc-Kinney Uggla**  
Vice Chairman of the Board, A.P. Møller - Mærsk A/S Vice Chairman, A.P. Møller and Chastine Mc-Kinney Møller Foundation DENMARK

**Björn Wahlroos**  
President and CEO, Sampo plc. FINLAND

**Jacob Wallenberg**  
Chairman, Investor AB SWEDEN

**Baron Henrik Wedell-Wedellsborg**  
Partner, Bruun & Hjejle Chamberlain DENMARK

**Arne Alexander Wilhelmsen**  
Chairman of the Board, A Wilhelmsen Management NORWAY

# ASF CELEBRATES 100 YEARS

The Centennial celebrations of The American-Scandinavian Foundation culminated in the fall of 2011 with the presentation of the exhibition *Luminous Modernism: Scandinavian Art Comes to America, 1912*, and the Centennial Ball.



The guests of honor at the opening of *Luminous Modernism*: H.R.H. Crown Princess Mary of Denmark; T.M. King Harald V and Queen Sonja of Norway; King Carl XVI Gustaf of Sweden; H.E. Tarja Halonen, President of Finland; and H.M. Queen Silvia of Sweden.

Four of the ASF's five Patrons: H.E. Tarja Halonen, President of Finland; H.E. Ólafur Ragnar Grímsson, President of Iceland; H.M. King Harald V of Norway; and H.M. King Carl XVI Gustaf of Sweden were present for both events, along with H.R.H. Crown Prince Frederik of Denmark. H.M. Queen Margrethe II, the ASF's Danish Patron, made a special visit to Scandinavia House in June 2011.

The exhibition *Luminous Modernism* featured paintings by leading Nordic artists of the late 19th and early 20th centuries.

It revisited the groundbreaking exhibition sponsored by the ASF in 1912, and was expanded to include works from the same period from all five Nordic countries, illustrating the richness of artistic expression throughout the region.

Two earlier exhibitions had also been presented as part of the Centennial: *Nordic Models + Common Ground: Art and Design Unfolded*, in the fall of 2010, which offered a fresh look at art and design in Scandinavia, and *North by New York: New Nordic Art*, in the spring of 2011, which focused on contemporary Scandinavian art. Comprehensive catalogues were published in conjunction with all three exhibitions.



H.R.H. Crown Princess Mary, ASF Board Member Patricia Berman, and H.M. Queen Sonja in conversation at the opening of *Luminous Modernism*.

The ASF also presented an enhanced schedule of programs throughout its centennial year that included films, lecture series, concerts, children's activities, and publications.

Three Curtis L. Carlson Centennial Lectures featured Nobel laureates: H.E. Martti Ahtisaari (Nobel Peace Prize laureate and former President of Finland), Kofi Annan (Nobel Peace Prize laureate and former Secretary-General of the United Nations), and Dr. Torsten Wiesel (Swedish-born Nobel laureate in Physiology or Medicine).

Other lecture series included *Nordic Design Now* and *Northern Influences: Americans Look at Great Nordic Writers*, while a Nordic Investment Bank Economic Colloquium explored *Economic Trends into the Coming Century*.



Kofi Annan, former UN Secretary-General, speaking at Scandinavia House

Concerts at Scandinavia House during the celebration included Norwegian pianist Leif Ove Andsnes in an evening of conversation and music, Swedish pianist Per Tengstrand's presentation of *Musical Evenings with Nordic Stars*, and a three-concert centennial tribute by members of the Royal Danish Academy of Music.



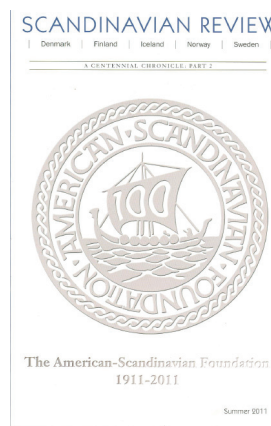
Norwegian Pianist Leif Ove Andsnes spoke and performed at Scandinavia House



North by New York: New Nordic Art exhibition at Scandinavia House

Children were another focus during the Centennial with the opening of a reimagined Heimbold Family Children's Playing and Learning Center. A symposium on *Nordic Perspectives on Caring and Teaching in Early Childhood: Implications for Success in School* brought together Scandinavian and American experts to explore how Nordic thought and practice could benefit the American education system.

The ASF's flagship publication, *Scandinavian Review*, published three Centennial issues, presenting an overview of the events, achievements, and people behind the ASF in its first century, while a video presentation of ASF former fellows and interns highlighted the exchange programs' impact on individuals.



While presenting a broad array of programs highlighting its rich history and diverse programs during the Centennial, the American-Scandinavian Foundation also looked toward the future with the establishment of a **Centennial/Second Century Fund** to provide support for the expansion of programming into the next century. Please refer to page 35 for a list of donors who have made generous donations to the **ASF Centennial/Second Century Campaign**, as of June 30, 2013.

# ASF CENTENNIAL BALL

October 21, 2011



The Guests of Honor at the Centennial Ball (L-R): Bernt Reitan, ASF Board Co-Chairman; Bente Svensen Franz, ASF Deputy Chairmain; H.E. Tarja Halonen, President of Finland; T.M. Queen Sonja and King Harald V of Norway; T.M. Queen Silvia and King Carl XVI Gustaf of Sweden; T.R.H. Crown Princess Mary and Crown Prince Frederik of Denmark; Mrs. Dorrit Moussaieff and H.E. Ólafur Ragnar Grímsson, President of Iceland; H.R.H. Princess Madeleine of Sweden; Richard E. Oldenburg, ASF Board Co-Chairman; Edward P. Gallagher, ASF President.

Nearly 1,200 people attended the ASF Centennial Ball on Friday, October 21, 2011 at the Hilton Hotel in New York City. Celebrating the culmination of the ASF Centennial year, the Ball welcomed many illustrious guests and friends from around the world. The Guests of Honor were Their Majesties King Carl XVI Gustaf and Queen Silvia of Sweden; Their Majesties King Harald V and Queen Sonja of Norway; His Excellency Ólafur Ragnar Grímsson, President of Iceland, and Mrs. Dorrit Moussaieff; Her Excellency Tarja Halonen, President of Finland; and Their Royal Highnesses Crown Prince Frederik and Crown Princess Mary of Denmark. Renowned Norwegian actress, director, and ASF Trustee, Liv Ullmann, served as Master of Ceremonies for the evening.

The Gala Co-Chairs were Mrs. Jane Erkko, Inger G. and William B. Ginsberg, The Honorable Charles and Mrs. Monika Heibold, Christina Lang Assael, The Honorable John L. Loeb, Jr. and Sharon Handler, The Honorable and Mrs. Earle I. Mack, Dr. and Mrs. Kristján T. Ragnarsson, Lise Stolt-Nielsen, and Nadia Stolt-Nielsen. The Corporate Chair was John Thuestad, Executive Vice President, Alcoa Inc. The Vice-Chairs were Peter Baldwin and Lisbet Rausing, Anders and Amy Brag, Daniel and Ellen Braestrup Strickler, and Arthur and Constance Zeckendorf. The Corporate Vice-Chairs were Ulrik Juul Christensen, M.D., CEO, Area9; Raymond P. Ebeling, President, Wallenius Lines Holdings, Inc.; Kristin Holth, Executive Vice President, DnB NOR Americas; Fredd Hoff Isaksen and Ragnar Meyer-Knutsen,

Ship Owners, Sealift, Inc.; Harri-Pekka Kaukonen, President and CEO, Sanoma Oyj; Morten Nicolaisen, CFO, Maersk Inc.; and Jorma Ollila, Chairman, Nokia.

The dinner program began with opening remarks from Bernt Reitan, ASF Board Co-Chairman, who acknowledged the Guests of Honor and their longstanding support of the Foundation. King Carl XVI Gustaf of Sweden then addressed the guests. "On behalf of all of us Patrons," he said, "we congratulate you, The American-Scandinavian Foundation, on this first century of invaluable work." Richard E. Oldenburg, ASF Board Co-Chairman, then presented the Guests of Honor with a special commemorative gift and led a toast to the Patrons and the Foundation.

Messages from President Barack Obama, former President George W. Bush, and former President Bill Clinton were shared, all extending their congratulations to the ASF on such a momentous occasion. A video tribute featuring current and former Fellows of the ASF encapsulated the essence of the ASF's Fellowships & Grants program.

Broadway star Brian Stokes Mitchell delighted the audience with songs and personal reflections about Scandinavia. Then he and Master of Ceremonies Liv Ullmann led everyone in singing *Happy Birthday* to the Foundation.

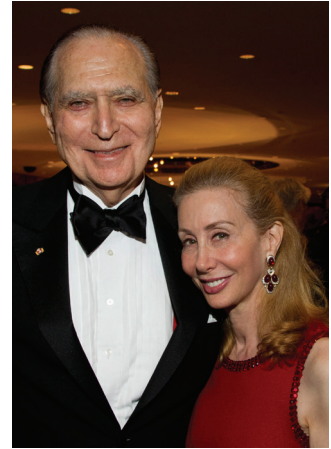
Following dinner, the Guests of Honor led the way to the Trianon Ballroom where the Crown Prince and Princess of Denmark led the dancing to Hank Lane Music.



ASF Trustee Linda Nordberg welcomes H.E. Tarja Halonen, President of Finland



Edward Gallagher, ASF President; Hon. John L. Loeb, Jr., Ball Co-Chair; Kjersti Reitan; Hon. and Mrs. Charles Heimbald, Ball Co-Chairs; Inger G. and William B. Ginsberg, Ball Co-Chairs



Hon. John L. Loeb Jr. and Sharon Handler, Ball Co-Chairs



H.M. King Carl XVI Gustaf of Sweden



T.R.H. Crown Prince Frederik and Crown Princess Mary lead the dancing



Chris and Sally Sonne



Hon. and Mrs. Lyndon L. Olson, Jr. with ASF Executive Vice President Lynn Carter



US Ambassador to Norway Barry White brings greetings from President Barack Obama



Inger McCabe Elliott



Arthur Zeckendorf, Ball Vice-Chair



Stephanie Brag with Anders and Amy Brag, Ball Vice-Chairs



Edward Gallagher, ASF President; Jane Erkkö, Ball Co-Chair; Lise Stolt-Nielsen, Ball Co-Chair; Nadia Stolt-Nielsen, Ball Co-Chair; Lena Biörck Kaplan; Richard Oldenburg, ASF Board Co-Chairman



Christina Lang Assael, Ball Co-Chair



Liv Ullmann, the Master of Ceremonies, with Brian Stokes Mitchell

# FELLOWSHIPS & GRANTS

The ASF Fellowships & Grants Program celebrated its centennial in 2012. The first ASF grants were made to three philologists in 1912, as one of the earliest programs of the newly established foundation's mission to promote educational and cultural exchange between the U.S. and the Nordic countries. Since then, more than 7,500 scholars, researchers, policymakers, artists, and professionals have received support for their work in areas now as far-ranging as medicine and the sciences, economics and political history, the arts and literature.

More than 140 new Scandinavian and American Fellows received financial support from the ASF for study and research projects abroad over the two-year period of this report. During the 2011-12 competition, \$684,000 was awarded to 66 Fellows from the U.S. and the five Nordic countries; \$794,000 was awarded to 66 Fellows in the 2012-13 competition. Fellowships and grants generally range between \$5,000 and \$23,000 and are awarded to graduate students, post-graduate scholars, professionals, and artists pursuing independent projects for periods of up to one year.

The ASF also offers funding to American colleges and universities to support visiting lectureships by distinguished scholars from Norway or Sweden for a semester, and a travel stipend is also provided so that the lecturer can speak at other institutions in the U.S. Over the past two years, Old Dominion University in Virginia and the State University of New York, Albany were selected to host specialists in International Relations and Public Health Policy, respectively.

Outstanding English translations of poetry, fiction, drama, or literary prose, originally written in a Nordic language, are recognized each year by the ASF's Nadia Christensen Translation Prize and the Leif and Inger Sjöberg Translation Prize.



Lease Weimer, to Finland



Rickard Fristedt, from Sweden

## FELLOWSHIP & GRANT FUNDS ADMINISTERED BY THE ASF

The ASF has some 40 funds that it holds on a long-term basis, using the income for fellowships and grants:

Mathilde Aas Memorial Fund • Carl G. and Rikke Fredriksen Barth Memorial Fund • John G. Bergquist Fellowship in Chemistry Fund • Bernadotte Fund • Sven and Ingrid Bernhard Fund • Crown Princess Märtha Friendship Fund • Finnish Fund • Former Fellows Fund • Icelandic Crafts Fund • Carl Olaf, Marie, and Katherine Elizabeth Johnson Fellowship Fund • Henrik Kauffmann Fund • King Haakon VII Birthday Fund • King Olav V 70th Birthday Fund • Helen Lee and Emil Lassen Fellowship Fund • Hans Knudsen Lorentzen Memorial Fund • Rev. Lars R. Lund Fund for Nordic Literature • Martha and Jack McFall Fund • New Sweden '88 Cultural and Educational Fund • Birgit Nilsson Fund • The Dr. Mary Jane Oestmann Fellowship Fund in the Sciences • Amanda E. Roleson Fund • Carl Sandburg Fund • Sather Fund • Leif and Inger Sjöberg Fund • Thor and Saimie Soderholm Fund • Carol and Hans Chr. Sonne Fellowship Fund • Sønsteby/Whist Fund • Håkon Björnström Steffanson Scholarship Fund-Sweden America Foundation • Håkon Björnström Steffanson Scholarship Fund-Uppsala University • Stolt-Nielsen Fund for Education • Alice and Corrin Strong Fund • Haakon Styri Fellowship Fund • Selma C. Swanson Fund • Thor Thors Memorial Fund • Thord-Gray Memorial Scholarship Fund • Marcus and Amalia Wallenberg Memorial Fund • Andrew E. and G. Norman Wigeland Fund • Charles K. Willey Memorial Fund

## 2011-2012 AWARDS

### FELLOWS FROM DENMARK

*All candidates recommended by The Denmark-America Foundation (Danmark-Amerika Fondet), Copenhagen*

Bregengaard, Katrine to Columbia University  
Master's-directed study, Human Rights. Henrik Kauffmann Fund; Kulin Family Grant

Hansen, Mads Jeppe to the Pratt Institute of Design  
Master's-directed study, Industrial Design. Helen Lee and Emil Lassen Fund; Scan | Design Foundation by Inger & Jens Bruun Grant; Henrik Kauffmann Fund

### FELLOWS TO DENMARK

Amelang, Todd Michael from the University of Wisconsin, Madison  
Dissertation Research, Scandinavian Studies, The Arnamagnæen Collection, University of Copenhagen. Helen Lee and Emil Lassen Fund; Scan | Design by Inger and Jens Bruun Foundation Grant

Collier, Larissa from Indiana University  
Dissertation Research, Biological Anthropology, University of Copenhagen. Carol and Hans Christian Sonne Fund

Taft, Maggie from the University of Chicago  
Dissertation Research, Art History, Royal School of Fine Arts, School of Architecture, Danish Museum of Art & Design, Copenhagen Business School. Scan | Design by Inger and Jens Bruun Foundation Grant

### FELLOWS FROM FINLAND

*All candidates recommended by The League of Finnish-American Societies (Suomi-Amerikka Yhdistysten Liitto), Helsinki*

Koivusalo, Anna to the University of South Carolina  
Dissertation Research, American History. Thor and Saimi Soderholm Fund; Martha and Jack McFall Fund

Markelin, Tove to Fordham University  
Graduate level study, Law and Economics. Finnish Fund

Tervo, Juuso to Ohio State University  
Ph.D.-directed study, Art Education. Finnish Fund; Carl G. and Rikke Fredriksen Barth Fund

### FELLOWS TO FINLAND

Johnson, Joel from Colorado State University  
Post-Doctoral Research, Political Science, University of Helsinki. Martha and Jack McFall Fund; Scandinavian Seminar Fund

Weimer, Lease from the University of Georgia  
Dissertation Research, Higher Education, University of Jyväskylä and University of Tampere. Thor and Saimi Soderholm Fund

### FELLOWS FROM ICELAND

*All candidates recommended by The Icelandic-American Society (Íslensk-Ameríska Félagid), Reykjavik*

Árnason, Einar Baldvin to the University of Southern California  
MFA-directed study, Animation. Thor Thors Memorial Fund

Gísladóttir, Elísabet to the University of California, Los Angeles  
LLM-directed study, Law. Thor Thors Memorial Fund

Gísladóttir, Viktoria Rós to the University of California, San Diego  
PhD-directed study, Mechanical Engineering. Thor Thors Memorial Fund

Guðjónsdóttir, Brynhildur to Yale School of Drama  
Graduate Research, Playwriting. Thor Thors Memorial Fund

Guðmundsdóttir, Bergljót Gyða to the University of Rhode Island  
PhD-directed study, Psychology. Thor Thors Memorial Fund

Jónsdóttir, Harpa Lind to the University of North Dakota  
PhD-directed study, Clinical Psychology. Thor Thors Memorial Fund

Lárusson, Friðrik to Tufts University  
PhD-directed study, Electrical Engineering. Thor Thors Memorial Fund; Charles K. Willey Fund

Snorrason, Ivar to the University of Wisconsin-Milwaukee  
PhD-directed study, Clinical Psychology. Charles K. Willey Fund; Thor Thors Special Contributions Fund

Stefánsson, Stefán Andri to Duke University  
Master's-directed study, Economics. Charles K. Willey Fund

Thorsteinsdóttir, Fanney Rós to Columbia University  
LLM-directed study, Law. Charles K. Willey Fund

### FELLOWS TO ICELAND

Ladensack, Raquel Marie from the University of Illinois School of Art & Design  
MFA-direct study, Photography, University of Iceland. Thor Thors Memorial Fund; Scandinavian Seminar Grant

McKay, Daniele from the University of Oregon  
Dissertation research, Geology. Scandinavian Seminar Grant

Cannady, Kimberly Darlene from the University of Washington  
Dissertation research, Ethnomusicology. Thor Thors Memorial Fund

### FELLOWS FROM NORWAY

*All candidates recommended by The Norway-America Association (Norge-Amerika Foreningen), Oslo*

Bertheussen, Asle to the University of Pennsylvania  
Master's-directed study, Business Administration. King Olav V Fund; King Haakon VII Birthday Fund

Bore, Geir Atle to the University of Virginia  
Master's-directed study, Business Administration. Andrew E. and G. Norman Wigeland Fund

Bragstad, Line Kildal to the University of California, San Francisco  
Dissertation research, Nursing. Norway House Foundation Grant

Brevik, Kristin to the School of Visual Arts  
MFA-directed study, Interaction Design. Andrew E. and G. Norman Wigeland Fund

Buli, Liv to New York University  
Master's-directed study, Journalism. Sather Fund

Christiansen, Jørgen Berle to New York University  
Master's-directed study, Mathematics. Andrew E. and G. Norman Wigeland Fund

Fitjar, Rune Dahl to the University of California, Los Angeles  
Post-doctoral research, Political Science. Norway House Foundation Grant

Gadeholt, Øydis to the University of Pennsylvania  
Master's-directed study, Materials Science and Engineering. Mathilde Aas Fund

Gasarov, Elnor to Brandeis University  
Master's-directed study, International Relations. Johan Jørgen Holst Award/  
Andrew E. and G. Norman Wigeland Fund

Guttormsgaard, Anna to Columbia University  
Master's-directed study, Film. Andrew E. and G. Norman Wigeland Fund

Haugseeng, Rune Gjølringbø to Massachusetts Institute of Technology  
PhD-directed study, Mathematics. Andrew E. and G. Norman Wigeland Fund

Havelin, Karen to Columbia University  
Master's-directed study, Creative Writing. Andrew E. and G. Norman  
Wigeland Fund

Hetland, Ida Jaarvik to New York University  
Master's-directed study, International Education. Mathilde Aas Fund

Jørstad, Mari to Duke University  
PhD-directed study, Theology. Crown Princess Märtha Friendship Fund;  
Mathilde Aas Fund

Karlsen, Aleksander to Columbia University  
MBA-directed study, Business Administration. Andrew E. and G. Norman  
Wigeland Fund

Larsmon, Anne Guro to California Institute of the Arts  
MFA directed study, Studio Art. Norway House Foundation Grant

Lindviksmoen, Guro to University of California, San Francisco  
Master's-directed study, Oncology. Norway House Foundation Grant

Meyer, Ingvild Felling to New York University  
Master's-directed study, Public Health. Andrew E. and G. Norman Wigeland  
Fund

Østmo, Simen to Arizona State University  
PhD-directed study, Archaeology. Andrew E. and G. Norman Wigeland Fund

Øye, Victoria Bugge to Columbia University  
Master's-directed study, Architecture. Andrew E. and G. Norman Wigeland Fund

Platou, Morten to Georgetown University  
LLM-directed study, Law. Andrew E. and G. Norman Wigeland Fund

Ruus, Hilde to Columbia University  
LLM-directed study, Law. Andrew E. and G. Norman Wigeland Fund

Shahab, Nor to University of California, Los Angeles  
Graduate level study, Dentistry. Norway House Foundation Grant

Smith, Ida Dokk to Columbia University  
Master's-directed study, International Affairs. Johan Jørgen Holst Award/  
Andrew E. and G. Norman Wigeland Fund

Strømmen, Christian to Carnegie Mellon University  
Master's-directed study, Computer Science. Andrew E. and G. Norman  
Wigeland Fund; Crown Princess Märtha Friendship Fund

Sundal, Christina to Mayo Clinic, Jacksonville, FL  
Dissertation research, Neurology. Haakon Styri Fund.

Swenson, Eva Kristine to the University of Connecticut, Farmington  
Graduate level study, Dentistry. Haakon Styri Fund

Tjeldflaot, Andreas Anderssen to the University of Pennsylvania, School of Design  
Master's-directed study, Architecture. Andrew E. and G. Norman Wigeland Fund

## Professional Development Grant

Roe, Per Gunnar to Columbia University  
Urban Studies, Columbia University. Professional Development Award:  
Andrew E. and G. Norman Wigeland Fund

## FELLOWS TO NORWAY

Choksi, Nishaant from the University of Michigan, Ann Arbor  
Dissertation Research, Linguistic Anthropology, the National Library, Oslo  
and the University of Oslo. King Olav V Fund

Gresens, Susan from Towson University  
Post-doctoral Research, Aquatic Ecology, Norwegian University of Science  
and Technology. Håkon Styri Fund

Maher, Harmon from the University of Nebraska, Omaha  
Post-doctoral Research, Geology, University Centre in Svalbard. Håkon  
Styri Fund; Scandinavian Seminar Grant

Retelle, Michael from Bates College  
Post-doctoral Research, Geology, University Centre in Svalbard. Håkon  
Styri Fund; Scandinavian Seminar Grant

Ritchie, Kenneth from the University of Wisconsin, Madison  
Dissertation Research, Archaeology, University of Bergen. Crown Princess  
Märtha Friendship Fund

## FELLOWS FROM SWEDEN

*All candidates recommended by the Sweden-America Foundation (Sverige-  
Amerika Stiftelsen), Stockholm.*

Ali, Mohamed to Harvard Law School  
SJD - directed study, Juridical Science. Håkon Björnström Steffanson  
Fund/Sweden-America Foundation

Brosché, Johan to New York University  
Dissertation Research, Conflict Resolution. Håkon Björnström Steffanson  
Fund/Uppsala University; Bernadotte Fund

Hedner, Margareta to Columbia University  
Dissertation research, Psychology. Marcus and Amalia Wallenberg Fund;  
Thord-Gray Memorial Fund

Lund, Glenn to University of California, Los Angeles  
MFA-directed study, Film Production. Thord-Gray Memorial Fund

Mielnicki, Philip to Harvard Law School  
Dissertation Research, Law. Thord-Gray Memorial Fund

Rohlén, Johan to Lawrence Berkeley National Laboratory  
Dissertation Research, Physics. Marcus and Amalia Wallenberg Fund

Välitalo, Jenny to University of Rochester Eastman School of Music  
PhD-direct study, Performance and Literature. Thord-Gray Memorial Fund

## FELLOWS TO SWEDEN

Lebwohl, Benjamin from Columbia University  
Post-doctoral Research, Medicine, Karolinska Institute. Thord-Gray Memorial  
Fund

Malek, Amy from the University of California, Los Angeles  
Dissertation Research, Anthropology, Stockholm University. Scandinavian  
Seminar Grant

McCarthy, Lydia Anne from the University of North Carolina, Chapel Hill  
MFA-directed study, Photography, Swedish University of Agricultural  
Sciences. Scandinavian Seminar Grant; Thord-Gray Memorial Fund

Morey, Maribel from Princeton University  
Dissertation Research, History, Stockholm University and the Labour  
Movement Archives and Library. Scandinavian Seminar Grant

Oaks, Jared from Brigham Young University  
Independent Research, Conducting, College of Music, Stockholm. Sven and  
Ingrid Bernhard Fund; Former Fellows Fund; Hans K. Lorentzen Fund; Selma  
Swanson Fund

Schluessel, Eric from Harvard University  
Dissertation Research, History, Stockholm University. Scandinavian  
Seminar Grant

Steele, Kaitlyn from the University of New Hampshire  
MS-directed research, Earth Sciences, Swedish University of Agricultural  
Sciences and Abisko Scientific Research Station. Scandinavian Seminar Grant

Urberg, Michelle from the University of Chicago  
Dissertation Research, Musicology, Uppsala University. Thord-Gray Memorial  
Fund; Carl G. and Rikke Fredriksen Barth Fund

Welles-Nystrom, Barbara from Fairfield University  
Post-doctoral Research, Anthropology, Karolinska Institute. Hans K. Lorentzen  
Fund

### FELLOWS TO MULTI-COUNTRIES

Horak, Laura from the University of California, Berkeley  
Dissertation research, Film Studies. Thord-Gray Memorial Fund; Amanda C.  
Roleson Fund; Edith Coulter Fund

Fritz, Jan Marie from the University of Cincinnati  
Post-doctoral Research, Sociology, Gothenburg University and the Women's  
International League for Peace and Freedom. Helen Lee and Emil Lassen Fund

Lerner, Kelly from the University of Oregon  
Post-graduate Research, Architecture, PassivHusCentrum, Alingsås, Sweden.  
Scan | Design by Inger and Jens Bruun Foundation Fund

### VISITING LECTURESHIP

Old Dominion University, Norfolk, VA  
The Graduate Program in International Studies (GPIS), College of Arts  
and Letters. Host to Dr. Jan Joel Andersson (The Swedish Institute of  
International Affairs), 2011-12 academic year. Thord-Gray Memorial  
Scholarship Fund

### TRANSLATION PRIZE

Meigs, Michael (Austin, Texas)  
First Prize for his translation from Swedish of excerpts from *The Dean*  
(*Dekanen*) a novel by Lars Gustafsson



Einar Árnason, from Iceland

## 2012-2013 AWARDS

### FELLOWS FROM DENMARK

*All candidates recommended by The Denmark-America Foundation (Danmark-  
Amerika Fondet), Copenhagen*

Popp-Madsen, Benjamin Ask to the New School for Social Research, NY  
Graduate research, Political Science. Henrik Kauffmann Fund; Scan | Design  
Foundation by Inger & Jens Bruun Grant

Rahbek-Clemmensen, Jon to Columbia University  
Dissertation research, Political Science. Helen Lee and Emil Lassen Fund;  
Scan | Design Foundation by Inger & Jens Bruun Grant

### FELLOWS TO DENMARK

Anderson, Leslie from CUNY Graduate Center  
Dissertation Research, Art History, Danish National Art Library, Danish  
National Archives, University of Copenhagen. Amanda C. Roleson Fund;  
Ambassador John L. Loeb, Jr. Grant

Banks, William from the University of Wisconsin, Madison  
Dissertation Research, Literature, Aarhus University. Amanda C. Roleson Fund

### FELLOWS FROM FINLAND

*All candidates recommended by The League of Finnish-American Societies  
(Suomi-Amerikka Yhdistysten Liitto), Helsinki*

Hirvonen, Olli Aukusti to the Manhattan School of Music  
MA-directed study, Jazz Arts. Carl G. and Rikke Fredriksen Barth Fund;  
Martha and Jack McFall Fund; Thor and Saimi Soderholm Fund

Lauren, Juha to MIT Sloan School of Management  
MBA-direct study. Finnish Fund; Martha and Jack McFall Fund

### FELLOWS TO FINLAND

Graham, Lonnie from Pennsylvania State University  
Visual Arts/Photography, University of Oulu. Hans K. Lorentzen Fund

Miller, Kimberley from San Diego State University/ University of California,  
Davis  
Dissertation Research, Ecology, METLA, University of Eastern Finland.  
Scandinavian Seminar Grant

Yamaguchi, Liesl from Princeton University  
Dissertation Research, Translation, Research Institute for Finnish Languages  
& Dialects (KOTUS). Finnish Fund; Thor and Saimi Soderholm Fund;  
Martha and Jack McFall Fund

### FELLOWS FROM ICELAND

*All candidates recommended by The Icelandic-American Society (Íslensk-  
Ameríska Félagid), Reykjavik*

Björnsson, Páll Haukur to the California Institution of the Arts  
MFA-directed study, Fine Arts. Thor Thors Memorial Fund

Frostadóttir, Kristrún Mjöll to Boston University  
PhD-directed study, Economics. Thor Thors Memorial Fund; Charles K.  
Willey Fund

Guðjónsdóttir, Geirtrúður Ása to the University of Hartford  
MM-Directed study, Violin Performance. Thor Thors Memorial Fund

Ólafsson, Brynjólfur Viðir to the University of Texas, Austin  
PhD-directed study, Mechanical Engineering. Charles K. Willey Fund

Ragnarsson, Jörundu, to Columbia University  
MFA-directed study, Film Directing/Screenwriting. Thor Thors Memorial Fund

Sigurðardóttir, Sirra Sigrún to the School of Visual Arts  
MFA-directed study, Arts. Thor Thors Memorial Fund

Sigurðsson, Gunnar Atli to Johns Hopkins University  
PhD-directed study, Electrical Engineering. Charles K. Willey Fund

Kristjánsson, Hafsteinn Dan to Harvard University  
LLM-directed study. Thor Thors Memorial Fund

Thórðardóttir, Thórunn Helga to Columbia University  
LLM-directed study. Charles K. Willey Fund

Valdimarsdóttir, Margrét to City University of New York  
PhD-directed study, Criminal Justice. Charles K. Willey Fund

## FELLOWS TO ICELAND

Johnson, Janet from Brooklyn College  
Post-doctoral Research, Political Science, University of Iceland. Thor Thors Memorial Fund

Weigt, Jill. From California State University, San Marcos  
Post-doctoral Research, Sociology, University of Iceland. Thor Thors Memorial Fund

Imai, Cindy from the University of Iceland  
Dissertation Research, Nutrition, University of Iceland, Thor Thors Memorial Fund

Beyer, Emily from the University of Iowa  
Creative Writing, Árni Magnússon Institute. Thor Thors Memorial Fund

## FELLOWS FROM NORWAY

*All candidates recommended by The Norway-America Association (Norge-Amerika Foreningen), Oslo*

Aksnes, Jade Hærem to the American Film Institute  
MFA-directed study, Film. Norway House Grant

Alnes, Kristina to Columbia University  
MSc-directed study, Environmental Sciences. Mathilde Aas Fund; King Haakon VII Birthday Fund; King Olav V Fund; Andrew E. and G. Norman Wigeland Fund

Andreassen, Anders Johan to Harvard University  
Graduate research, Physics. Stolt-Nielsen Fund for Education

Bale, Kristoffer to the Massachusetts Institute of Technology, Sloan Institute  
MA-directed study, Finance. DNB ASA Fellowship for Graduate Study in Business Administration and Finance

Brotnow, Line to Yale University  
MSc-directed study, Psychology. Mathilde Aas Fund; King Haakon VII Birthday Fund; Andrew E. and G. Norman Wigeland Fund

Chen, Sara to Indiana University  
MA-directed study, Violin Performance. Carl Olaf, Marie and Katherine Elizabeth Johnson Fellowship Fund; Andrew E. and G. Norman Wigeland Fund

Dahl, Audun to the University of California, Berkeley  
PhD-directed study, Psychology. Norway House Grant

Foss-Skiftesvik, Lars to Columbia University  
MBA-directed study. DNB ASA Fellowship for Graduate Study in Business Administration and Finance

Guttormsgaard, Anna to Columbia University  
MFA-directed study, Film. Sather Fund; Andrew E. and G. Norman Wigeland Fund

Halleraker, Hans Martin Frostad to the Southern California Institute of Architecture  
MA-directed study, Architecture. Norway House Grant

Haugsgeng, Rune Gjøringbø to the Massachusetts Institute of Technology  
PhD-directed study, Mathematics. Carl Olaf, Marie and Katherine Elizabeth Johnson Fellowship Fund

James, Niklas to Harvard University  
MBA-directed study. DNB ASA Fellowship for Graduate Study in Business Administration and Finance

Johnson, David Urnes to Stanford University  
PhD-directed study, Mechanical Engineering. Håkon Styri; Norway House

Larsmon, Anne Guro to the California Institute of the Arts  
MFA-directed study, Fine Arts. Norway House Grant

Mossin, Ina to Tufts University  
MA-directed study, International Affairs. Johan Jørgen Holst Award, Andrew E. and G. Norman Wigeland Fund

Nerland, Kristoffer to the University of Pennsylvania  
LLM-directed study. Mathilde Aas Fund

Ring, Marius A. Kalleberg to Duke University  
MA-directed study, Economics. Andrew E. and G. Norman Wigeland Fund

Sandaker, Eirik Andreas to the American Film Institute Conservatory  
MA-directed study, Film. Norway House Grant

Tvedt, Ida Lødemel to the New School for Social Research  
MA-directed study, Critical Theory. Carl Olaf, Marie and Katherine Elizabeth Johnson Fellowship Fund; Andrew E. and G. Norman Wigeland Fund

## Professional Development Grant

Lund, Elisabeth Færøy, Artistic Apprentice, Jill Sigman/thinkdance, and workshops at The Laban/Bartenieff Institute of Movement Studies.  
Professional Development Award: Andrew E. and G. Norman Wigeland Fund

## FELLOWS TO NORWAY

Hilyard, Stephen from University of Wisconsin, Madison  
Visual Arts/Multi-Media, The Arctic Circle Residency. Scandinavian Seminar Grant

Peterson, Anna from Ohio State University  
Dissertation Research, History, University of Oslo. King Olav V Fund

Reynard, Maghan from the University of Michigan  
Visual Arts/Multi-Media, Olso School of Architecture & Design. Crown Princess Märtha Friendship Fund; Carol and Hans Christian Sonne Fund; King Olav V Fund

Rothschild, Rachel from Yale University  
Dissertation Research, History of Science & Medicine, National Archives of Norway, Norwegian Institute for Air Research, Norwegian Meteorological Institute. King Olav V Fund

## FELLOWS FROM SWEDEN

All candidates recommended by the Sweden-America Foundation (*Sverige-Amerika Stiftelsen*), Stockholm.

Almqvist, Jonas to Stanford University  
Postdoctoral research, Structural Biology. Dr. Mary Jane Oestmann Fund; Bernadotte Fund; Håkon Björnström Steffansson Fund/Sweden-America Foundation

Fristedt, Rikard to the University of California, Los Angeles  
Postdoctoral research, Cell Biology. Marcus and Amalia Wallenberg Fund

Hjorthén, Adam to the University of Minnesota  
PhD - directed study, History. Håkon Björnström Steffansson Fund/Uppsala University; Thord-Gray Memorial Scholarship Fund

Liljas, Per to New York University  
MA-directed study, Journalism. Thord-Gray Memorial Fund

Netz, Joakim to New York University  
Dissertation research. Business Administration. Marcus and Amalia Wallenberg Fund

Persson, Ninni to Wayne State University  
Dissertation research. Psychology. Thord-Gray Memorial Fund

Svensson, Emma to the University of Florida  
Dissertation research, Media and Communication. Marcus and Amalia Wallenberg Fund

## FELLOWS TO SWEDEN

Abrams, Lucy from the Eastman School of Music  
Music/Clarinet, Malmö Academy of Music. Sven and Ingrid Bernhard Fund; Thord-Gray Memorial Fund; Carl G. and Rikke Fredriksen Barth Fund; Hans K. Lorentzen Fund

Butler-Wall, Brita from the University of California, Los Angeles  
Postdoctoral Research, History, Bishop Hill Society Archives, Royal Library, Regional Archives. Former Fellows Fund; Selma Swanson Fund

Gilman, Rebecca from Northwestern University  
Creative Writing, Teater Durken, Gothenburg. Thord-Gray Memorial Fund

Schroeder, Jason from the University of Wisconsin, Madison  
Dissertation Research, Scandinavian Studies, Stockholm University, Uppsala University. Scandinavian Seminar Grant; Thord-Gray Memorial Fund

Tirrell, Timothy from the University of California, San Diego  
Dissertation Research, Biochemistry and Biomedical Sciences, Sahlgrenska University Hospital. John G. Bergquist Fund

Wells, Walker from California Polytechnic University  
Graduate Research, Urban Planning, Royal Institute of Technology (KTH), Royal Academy of Art (KTH). Thord-Gray Memorial Fund

## FELLOWS TO MULTI-COUNTRIES

Bryan, Eric from Missouri University of Science and Technology  
Postdoctoral Research, Literature, Árni Magnússon Institute. Thor Thors Memorial Fund

Dillon, Ryan from Humboldt State University  
Graduate Research, Oceanography, University of Umeå. Institute for Marine Research, Bergen, Marine Research Institute, Reykjavik. Scandinavian Seminar Grant

Jones, Krista from the University of California, Davis  
Postdoctoral Research, Wildlife Conservation, Hedmark University College. Scandinavian Seminar Grant

Jordheim, Alisa from the University of Cincinnati  
Dissertation research, Musicology, The Royal Library/National Library of Denmark, University of Oslo. Amanda C. Roleson Fund

Lucas, Melissa from the University of Washington  
Dissertation Research, Literature, University of Bergen, University of Copenhagen, Society of Danish Language & Literature. Amanda C. Roleson Fund

Whitmire, Ethelene from the University of Wisconsin, Madison  
Postdoctoral Research, Library & Information Science, Danish Library Centre for Integration, Malmö City Library. Henrik Kauffmann Fund

## VISITING LECTURESHIP

University at Albany (SUNY)  
Center for Global Health, School of Public Health Center for Global Health  
Host to Dr. Lena Andersson (Sahlgrenska Academy), Fall semester 2012.  
Thord-Gray Memorial Scholarship Fund

## TRANSLATION PRIZE

Aiken, Martin (Søro, Denmark)  
First Prize for his translation from Danish of excerpts from *Hildegard*, a novel by Anne-Lise Marstrand-Jorgensen

Hoekstra, Misha (Aarhus, Denmark)  
Leif and Inger Leif and Inger Sjöberg Prize for his translation from Danish of excerpts from *You Disappear (Du forsvinder)*, a novel by Christian



Nor Shabab, from Norway

## SPECIAL GRANT FOR ICELANDIC NATIONAL PARKS PROGRAM

The ASF provided support to 15 Icelanders who work at national parks, or parks-related agencies and nonprofit, to participate in three-week training programs in parks management in the U.S.: 7 participants in Washington DC, Virginia, and West Virginia in October/November 2012, and 8 participants in Washington State and Oregon in March 2013. Alcoa Foundation Grant.

# PUBLIC PROJECT GRANTS

The ASF's Public Project Grants provide support for programs of Scandinavian culture, art, and thought across the U.S., as well as programs presenting American culture within the Nordic countries. During 2011-2012, \$19,000 was awarded in grants to 6 public projects; in 2012-2013, an additional \$23,500 was awarded to 18 projects. In cooperation with distinguished institutions across the U.S. and abroad, the Public Project Grants program supported artistic, cultural, and educational programs in more than 10 states and in the Nordic countries. Funding is allocated to allow institutions of all sizes to add programming focused on Nordic culture.



Jenny Lind Festival at Augsburg College



Terje Isungset, Cedar Cultural Center



Sámi Jienat Choir Visit to FinnFest USA 2013

## PUBLIC PROJECTS FUNDED BY THE ASF July 2011-June 2012

The Danish Immigrant Museum, Elkhorn, IA  
Exhibition "Faces of Copenhagen" featuring photographs by Itzick Lev

The Longfellow Chorus, Portland, ME  
The 6th annual Longfellow Choral Festival "Ole Bull, Longfellow & Elgar: Scenes from the Saga of King Olaf"

Morphoses, LTD, New York, NY  
Commission & premiere of a new work by Swedish film director & choreographer Pontus Lidberg

New York Scandia Symphony, New York, NY  
The Scandinavian Music Festival

Rabbit Hole Ensemble, Brooklyn, NY  
The development and premiere of "A Day in August", a physical-theatre, ensemble-generated adaptation of August Strindberg's "Ensam" (Alone)

Susquehanna Folk Music Society, New Cumberland, PA  
Participation of Swedish musician Ale Möller in the folk music festival "Exploring Cross-Cultural Connections: Swedish and Appalachian Fiddle Tunes"

## PUBLIC PROJECTS FUNDED BY THE ASF July 2012-June 2013

American Swedish Historical Museum, Philadelphia, PA  
New Sweden History Conference

Augustana College, Moline, IL  
Midsummer concerts Swedish 'Jenny Lind' winner soprano Magdalena Risberg

Augustana College, Swenson Swedish Immigration Research Center, Rock Island, IL  
Symposium "Indians & Immigrants - Entangled Histories"

Cedar Cultural Center, Minneapolis, MN  
Terje Isungset's "Ice Music"

Cedar Cultural Center, Minneapolis, MN  
Scandinavian Music Series

The Collegiate Chorale, New York, NY  
Performance of "Song of Norway"

Commonweal Theatre Company, Lanesboro, MN  
Attendance of guest speaker Prof. Frode Hellend at the 2013 Ibsen Festival

Contemporary Art Museum of St. Louis, St. Louis, MO  
Mika Taanila exhibition "Tomorrow's New Dawn"

Corporation of the Fine Arts Museums, San Francisco, CA  
Anders Zorn exhibition "Sweden's Master Painter"

Festival of New Trumpet Music, New York, NY  
Concert by Norwegian trumpeter Arve Henriksen

FinnFest USA 2013, Hancock, MI  
Sámi Jienat Choir Visit to FinnFest USA 2013

Haystack Mountain School of Crafts, Deer Isle, ME  
Participation of 2 Norwegian and 1 Icelandic craft artists in the 2013 summer program

The Joyce Theater Foundation, Inc., New York, NY  
Performance of "Ice Hot: Nordic Dance"

Kling & Bang Gallery, Reykjavik, Iceland  
Exhibition 'Psychogeography'

Nordic Heritage Museum, Seattle, WA  
Exhibition 'Ørnulf Opdahl - Mood Paintings of the North'

Other Minds Music Festival, San Francisco, CA  
Presentation of Scandinavian Artists at Other Minds International New Music Festival

The Schoolhouse Theater Foundation, Inc., Croton Falls, NY  
Performance of Lars Norén's "And Give Us the Shadows" at Mainstage Production

The Studio Theatre, Washington, DC  
Performance of "Baby Universe: A Puppet Odyssey"

# INTERNSHIPS & TRAINING PROGRAM

The American-Scandinavian Foundation's Internship and Training Program facilitates cultural exchanges between the United States and the five Nordic countries. During the two-year period covered by this report we welcomed 439 young Scandinavians to the United States to participate in internships and training programs in 32 states. The ASF, designated by the U.S. Department of State, provides J-1 visa sponsorship for these ambitious participants, making it possible for them to acquire hands-on experience and gain new skills and knowledge. There have been more than 16,000 interns and trainees since the ASF initiated this program in 1949.

Scandinavian interns and trainees gain valuable professional experience, build beneficial relationships, and learn American business techniques to be applied upon returning to their home countries. Students and young professionals participate in a wide range of fields from fashion design to mechanical engineering. Each participant is welcomed by the host firm as a member of the team and receives a direct, personal introduction to the American practice of his or her professional field.

The ASF is grateful to the many American businesses and organizations that have made it possible for these interns and trainees to acquire hands-on experience and gain new skills and knowledge. The collaboration of the ASF's Nordic cooperating offices is also an indispensable part of the program and is very much appreciated.



Mattias Henriksson

"The program has given me important technical knowledge for my future career. Thanks to ASF for helping set it up!"

-Mattias Henriksson

Computer Software Engineering Intern at Virtual Instruments  
San Jose, CA



Anna Hansson

"I feel more interested in the field now and also more eager to learn. It has changed my thoughts of where to go in my future career, or at least opened up a new, interesting field."

-Anna Hansson

Biotechnology Intern at DNA2.0  
Menlo Park, CA

"I feel ASF has been an excellent supporter of Scandinavian interns being able to experience an American architectural office. As a former ASF Fellow, I am pleased that I am able to return the favor. I greatly appreciate ASF's assistance with hosting Scandinavian architecture interns."

- Douglas Thornley  
Gould Evans (Host Firm)  
New York, NY

## INTERNSHIPS & TRAINING

In addition to assisting Scandinavian interns and trainees with the J-1 visa sponsorship and application process, the ASF promotes cultural exchange and international understanding by providing program participants with information about various aspects of American culture.

This initiative was launched in 2012 when the U.S. Department of State encouraged sponsors to focus on the cultural aspects of exchange programs. As a result, the ASF launched a series of regular events for its New York area participants, offering opportunities to attend various Broadway musicals, holiday parties, and sporting events, and we are working to expand these opportunities across the country. The ASF also distributes a monthly guide to American culture and launched a dedicated Facebook page for all program participants.



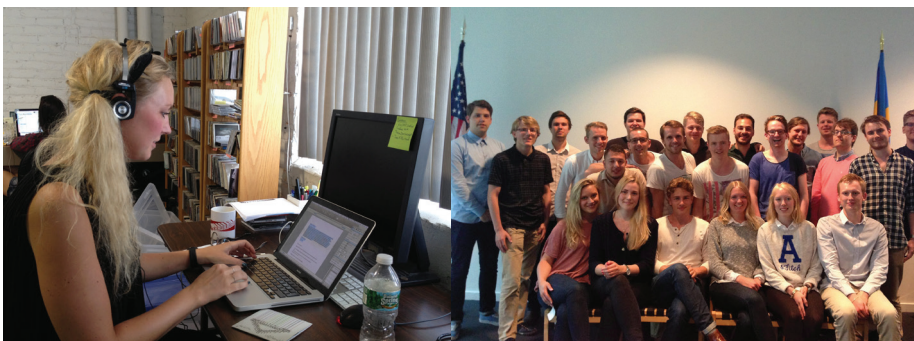
Interns and trainees at a Brooklyn Nets Game in December 2012  
Photo: American-Scandinavian Foundation



Students from Chalmers University of Technology attending an orientation at Scandinavia House in June 2013

Students from Chalmers Chalmers University of Technology in Gothenburg, Sweden came to Scandinavia House for orientation sessions in June 2011 and June 2012. Since 1980, the ASF has worked closely with two groups of engineering students from Chalmers—the USA Summer Internship Trainee Program and the Chalmers Engineering Trainee Appointment Committee. The ASF helps the students with arrangements for summer internships in the United States, and provides visa sponsorship. The students begin their experience in the United States as a group with a visit to New York City and an orientation session at Scandinavia House.

The ASF is proud to continue its support of these motivated students and wishes past, current, and future participants continued success in their endeavors.



Ditte Ravnild from Denmark, Terrorbird Media

Students from Chalmers University of Technology in June 2013



Rachel Sowe from Norway, Norwegian-American Chamber of Commerce

## INTERN & TRAINEE HOST FIRMS IN THE UNITED STATES

Over the course of this report the ASF sponsored visas for interns and trainees in 32 states. Many of the host firms listed below have ongoing relationships with the ASF and regularly offer internship and training positions to Scandinavians.

**ARIZONA:** Executive Training Solutions

**ARKANSAS:** J.B. Hunt Transport, Inc.

**CALIFORNIA:** AKQA, Inc.; ALOM Technologies Corporations; Avalex, Inc.; Buck Design, Inc.; Cypress Security LLC; Danfoss Sea Recovery; Digital Domain Productions, Inc.; Firetide; Goodby, Silverstein & Partners; IBM Almaden Research Center; Incitrio; JDSUMekanism; Method Inc.; My Sister's House; Nicira Networks, Inc.; Prologue Films; Rambus Inc.; Salehi & Associates, P.C.; SolutionSet LLC; Sony Pictures Imageworks; Superfad; BWA/Chiat/Day; Teen Challenge of Southern California; The Groop; The Outfit Media Group LLC; The Partners Trust Real Estate Brokerage; TIA Tours International America, Inc.; University of California, Los Angeles

**COLORADO:** Alchemy Security, LLC; Crispin Porter + Bogusky

**CONNECTICUT:** Finpro, Finland Trade Center; BTS USA, Inc.; Ergotech Inc.; Finpro USA Inc.; Save the Children USA

**DISTRICT OF COLUMBIA:** American International Group, Inc.; Bread for the City; Development Gateway, Inc.; World Affairs Council of Washington D.C.

**FLORIDA:** Amerden, Inc.; Finnish-American Rest Home, Inc.; Goldforest, Inc.; Islamorada Chamber of Commerce; National Hotel; TIA Tours International America Inc.; USA Shutter Company DBA MaestroShield;

**HAWAII:** Alii WoodTailors; Coalition for a Drug Free Hawaii; McNeil Wilson; Communications, Inc.; Technology News Bytes

**ILLINOIS:** Baird & Warner; Beyond Design, Inc.; KONE Inc.; UPM-Kymmene, Inc.

**INDIANA:** Avery Dennison, Performance Films Division

**IOWA:** Danish Immigrant Museum

**MARYLAND:** Biolin Scientific.com; NVI, Inc.

**MASSACHUSETTS:** Attivio, Inc.; Boston University; Brigham & Women's Hospital; C.B. Fisk, Inc.; e-pill, LLC; Magniture Systems Inc.; Massachusetts General Hospital; NXTevent; Sunnex, Inc.; VelQuest Corporation

**MICHIGAN:** Cascade Engineering, Inc.; Seco Tools, Inc.; The Finnish American Reporter; Vectorform LLC; Production Modeling Corporation

**MINNESOTA:** Ever-Green Energy, LLC

**MISSOURI:** Haldex Brake Products Corporation; Operation Breakthrough, Inc.

**NEW HAMPSHIRE:** Ecco USA, Inc.

**NEW JERSEY:** Atalanta Corporation; Camfil Farr Inc.; Clearpoint Inc.; Rema Tip Top North America

**NEW MEXICO:** Los Alamos National Laboratory

**NEW YORK:** 42West LLC; Alexander Wang Inc.; Anderson Center for Autism; Andrew Kreps Gallery; Archimuse; Archi-Tectonics; Bartle Bogle Hegarty; Bettina Schrewe Literary Scouting; B-Reel Inc.; Committee to Protect Journalists; Cornell University; D'Aquino Monaco Inc.; DIBD NYC Inc.; Domani Studio; Dress Code NY Inc.; Field Operations, PLLC; Finnish Cultural Institute in New York; Firstborn Multimedia; Fjallraven Arctic Fox, LLC; Friedman & Salisbury Sports Management; Fritz Hansen Inc.; Gage/Clemenceau Architects LLP; Great Works NY; Harry Allen Design; Holland & Knight LLP; Hotex USA Ltd.; HUSH Studios Inc.; International Refugee Rights Initiative; JB Cumberland Public Relations; Karla Otto Inc.; Kettle Solutions LLC; Leading Hotels of the World, Ltd.; Leeser Architecture; LOT-EK; Louise Blouin Foundation; Mental Health Asscn. of Westchester; Micky London; NAI Global of New York City, Inc.; NYCW LTD.; OneVoice Movement - PeaceWorks; Our Man In Havana; Panda Panther; Peace Dividend Trust; Pentagram Design, Inc.; Pod I Inc.; Restaurant AQUAVIT; Royal Copenhagen, Inc.; Salmagundi Center for American Art; SB New York, Inc.; Silverstein Properties Inc.; Skanska USA, Inc.; SLAB Architecture PLLC; Slade Architecture; Startup Company NYC Inc.; Stink Digital USA, LLC; StrawberryFrog LLC; Sullivan & Worcester LLP; Swedish-American Chamber of Commerce; Terrorbird Media; The American-Scandinavian Foundation; The Architect's Newspaper; The Barbarian Group, LLC; The Moth; TODA New York LLC; Tronic Studio LLC; VerticPortals Inc.; Vice Magazine/VBS.TV; VisitDenmark; W29 Showroom; Warnaco Inc.; Work Architecture Company; Your Majesty; Zync Music, Inc.

**NORTH CAROLINA:** ABB, Inc.

**OHIO:** Minelco, Inc.; Polysource, Inc.

**OREGON:** Q Center

**RHODE ISLAND:** APC by Schneider Electric; Tellart

**SOUTH CAROLINA:** Outokumpu Stainless Bar, Inc.

**TEXAS:** ABS - American Bureau of Shipping; Danfoss Chatleff, LLC; Haldor Topsoe, Inc.; ReachMaster, Inc.; Scandic Food, Inc.

**UTAH:** University of Utah; USA Team Handball

**VIRGIN ISLANDS:** Blak Corporation

**VIRGINIA:** Lindab, Inc.; Volvo Penta of the Americas, Inc.

**WASHINGTON:** Carnitech U.S. Inc., Marel Food System; Downtown Emergency Service Center; Lolo Boutique; Nordic Heritage Museum; Rothenbuhler Engineering; Sustainable Travel International; TIBCO Software Inc.

**WISCONSIN:** Ponsse North America, Inc.

**WYOMING:** Handel Information Technologies, Inc.

# SCANDINAVIA HOUSE PROGRAMS

Each year The American-Scandinavian Foundation presents more than 150 cultural and educational programs at Scandinavia House: The Nordic Center in America. In addition to serving as the headquarters for the ASF, Scandinavia House is a showcase for Nordic cultural and educational programs.

## EXHIBITIONS

Scandinavia House continues to present museum-quality exhibitions that showcase excellent artistic achievements in the Nordic countries, covering both historical and contemporary subjects in a wide variety of media. Recent exhibitions have included contemporary work by Nordic artists, a historical presentation of treasured paintings from the late 19th and early 20th centuries, photography by recent Fellows of the ASF, historical watercolors done at Icelandic saga sites paired with 21st century photographs from the same locations, contemporary photography from Finland, a look at prints made by Andy Warhol after prints by Edvard Munch, along with two documentary presentations: one on the Nordic Literature Prize, and the other at the history and legacy of Raoul Wallenberg on the centenary of his birth.

## SCANDINAVIA HOUSE GALLERIES

Exhibitions at Scandinavia House are presented in the third floor galleries:

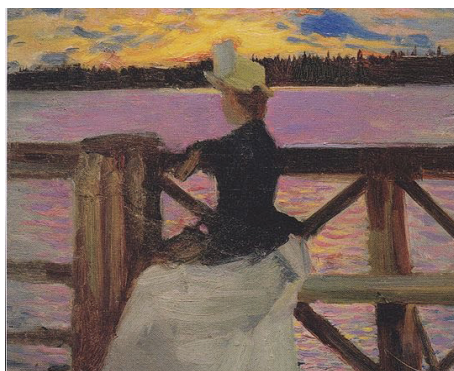
Stolt-Nielsen Gallery • Inger G. and William Ginsberg Gallery • Hartvig and Olette Gundersen Gallery • Leif Höegh Gallery



### *North by New York: New Nordic Art*

April 14–August 19, 2011

The second exhibition in the ASF Centennial series, *North by New York: New Nordic Art*, provided a condensed overview of recent paintings, sculpture, photography, graffiti, and multimedia from each of the Nordic countries. It was curated by art scholar and Yale School of Art Dean Robert Storr.



### *Luminous Modernism: Scandinavian Art Comes to America, 1912*

October 25, 2011 – February 11, 2013

The third and final exhibition celebrating the ASF Centennial, *Luminous Modernism* brought together more than 40 works by Nordic artists who embraced and pioneered the transformative aesthetic innovations that swept the European continent during the late nineteenth and early twentieth centuries. It revisited the groundbreaking *Scandinavian Art Exhibition of 1912* that toured the U.S. and introduced work by Scandinavian masters Munch, Hammershøi, and others to American audiences for the first time. *Luminous Modernism* featured several of the artists and works from the original exhibition, and expanded



### *50 Years of the Nordic Council Literature Prize*

February 27 – April 7, 2012

Organized by the Nordic Council, this exhibition profiled winners over the last 50 years of the Nordic Council Literature Prize, the highest honor awarded for a work of fiction produced in Denmark, Finland, Iceland, Norway, and Sweden, as well as Greenland, the Faroe Islands, Åland Islands, and Sámi language areas.



***To me there's no other choice — Raoul Wallenberg 1912-2012***  
 March 13-24, 2012

In recognition of the centenary of the birth of Raoul Wallenberg, *To me there's no other choice* featured three distinct stages, organized as a journey, to tell the story of Raoul Wallenberg, who led a rescue operation in Budapest, Hungary that saved tens of thousands of Jews during World War II. The exhibition, which traveled to numerous locations around the world, was co-presented by the Swedish Ministry of Foreign Affairs, the Swedish Institute, and the ASF.



***Unnatural Formations: Three Contemporary Photographers***  
 March 29 – July 28, 2012

In celebration of the 100th anniversary of the ASF Fellowship program, this exhibition explored the ways in which photographers access, engage, and even exploit the unique elements of Nordic terrain and climate for expressive effect. The exhibition featured the work of three recent ASF Fellows, all of whom have emerged as innovators in the field of contemporary landscape photography and who create works where disparate images are woven together to create new hypothetical landscapes.



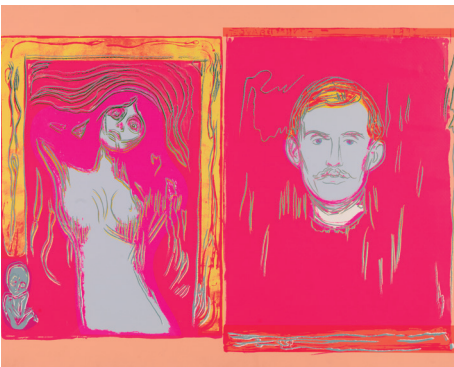
***Saga-Sites: Landscapes of the Icelandic Sagas***  
 September 29, 2012 – January 12, 2013

This exhibition paired the medieval narratives of Iceland, known collectively as the *Íslendingasögur*, or the *Sagas of Icelanders*, through the 19th-century watercolors of British artist W.G. Collingwood with the personal, documentary photographs of renowned Icelandic artist Einar Falur Ingólfsson, who returned to the legendary sites of the sagas 110 years after Collingwood's original journey in 1897.



***New Wave Finland: Contemporary Photography from the Helsinki School***  
 January 24 – April 6, 2013

Co-presented with Berlin's Gallery TAIK, *New Wave Finland* featured the work of young photographers and video artists from Finland's distinguished Helsinki School, which, since its founding in 1995, continues to be internationally recognized for its innovative approach to photography. Co-curated by Timothy Persons, curator of Gallery TAIK, and ASF consulting curator Pari Stave, the exhibition included over 40 recent works by 9 of the School's early to mid-career artists.



***MUNCH | WARHOL and the Multiple Image***  
 April 27 – July 27, 2013

Co-curated by Dr. Patricia G. Berman and Pari Stave, *MUNCH | WARHOL* brought together two of the twentieth century's most prolific and inventive printmakers — Norwegian Edvard Munch and American Andy Warhol. Organized in honor of the 150th anniversary of Edvard Munch's birth, the exhibition closely examined four graphic images produced by Munch at the end of the nineteenth century and later revisited by Andy Warhol in a little-known but extraordinary set of prints from 1984.

## FILMS

Popular film screenings were held regularly twice a week and included the annual presentations of new Nordic Cinema and Nordic Oscar contenders, along with Nordic Noir crime series and exhibition-related films.



*Borgen/The Government*



*The Good Son/Hyvää poika*



*Mamma Gógó*



*Happy, happy/ Sykt lykkelig*

### Nordic Noir: Håkon Nesser's Van Veeteren

July 6–August 12, 2011  
Season 1

### Figures in a Landscape: Nature and Narrative in Norway

September 28–December 9, 2011  
*The Growth of the Soil/Markens grøde*  
*The Bride of Glomdal/Glomdalsbruden*  
*Tramp/Fant;*  
*Nine Lives/Ni liv*  
*An-Magritt*  
*The Hunt/Jakten;*  
*Lake of the Dead/De Dødes tjern*

### The Fårö Documents

November 2–4, 2011  
*Fårö Document*  
*Fårö Document 1979*

### Special Exhibition-Related Screening

November 9, 2011  
*Edvard Munch*

### Nordic Oscar Contenders 2012

January 4–9, 2012  
**Sweden:** *Beyond/Svinalängorna*  
**Finland:** *Le Havre*  
**Norway:** *Happy, happy/ Sykt lykkelig*

### Nordic Noir: Maria Wern

January 1–February 24, 2012  
Season 1

### New Nordic Cinema

February 29–May 4, 2012  
**Greenland:** *Inuk/Le Voyage d'Inuk*  
**Norway:** *King of Devil's Island/Kongen av Bastøy; A Somewhat Gentle Man/En ganske snill mann*  
**Finland:** *Princess/Prinsessa; Run Sister Run!/Sisko tahtoisin jäädä*  
**Sweden:** *Balls/Farsan; Glowing Stars/I taket lyser stjärnorna*  
**Denmark:** *Submarino; A Family/En familie*

### Spring 2012 Special Screenings

*Up and About Again: New Artists' Film & Video from Finland*  
*Morphoses/Insights: Dance + Film/ Pontus Lidberg*

### Eva Norvind Tribute

June 12–13, 2012  
*Didn't Do It for Love;*  
*Born Without/Nacido Sin*

### Nordic Noir: Varg Veum II

June 20–August 3, 2012  
Season 2

### Borgen/The Government

September 26–December 7, 2012  
Seasons 1 & 2

### Nordic Oscar Contenders 2013

January 2–16, 2013  
**Denmark:** *A Royal Affair/En kongelig affære*  
**Iceland:** *The Deep/Djúpið*  
**Finland:** *Purge/Puhdistus*

### New Nordic Cinema

February 6–April 26, 2013  
**Opening Film (Norway):** *Liv and Ingmar/Liv og Ingmar*  
**Denmark:** *Superclásico; This Life/Hvidstengruppen*  
**Iceland:** *Mamma Gógó; Our Own Oslo/Okkar eigin Oslo*  
**Finland:** *The Good Son/Hyvää poika; Silence/Hiljaisuus*  
**Sweden:** *The Importance of Tying Your Own Shoes/Hur många lington finns det i världen?; The Crown Jewels/Kronjuvelerna*  
**Norway:** *The Orheim Company/Kompani Orheim; King Curling/Kong Curling*

### Munch and the Moving Image

May 5–17, 2013  
*Dead Madonna/Død Madonna*  
*Quest for Madonna/Jakten på Madonna*  
*Faces/Ansikter*  
*Dance of Life/Livets dans*  
*Edvard Munch*

### Nordic Noir: Anno 1790

June 19–July 26, 2013  
Season 1



*Liv and Ingmar/Liv og Ingmar*

Film screenings are held in Victor Borge Hall, named in honor of the legendary Danish entertainer and in recognition of his generosity to Scandinavia House.

## MUSIC & PERFORMING ARTS

Music programs ranged from classical to contemporary, jazz, and new indie music. Performers included the Danish String Quartet, Swedish pianist Per Tengstrand, a new music ensemble, the Nordic Chamber Opera Company, and Fellows studying music with support from the ASF. Performing arts programs also included regular staged readings of contemporary Nordic plays by the Scandinavian-American Theater Company.



The Norwegian Girls' Choir



Jens Elvekjaer

### Nordic Summer Jam

**Anders Holst**  
July 14, 2011  
**Emma Larsson**  
July 21, 2011  
**Karen Bach NY Trio**, featuring Ian Froman and Evan Gregor  
July 28, 2011

### Out of Scandinavia: New Indie Music from the Nordics

Skúli Sverrisson with Davíð Þór Jónsson

### Home Sweet Home/Hjem Kære Hjem

Scandinavian American Theater Company  
September 16, 2011

### Contemporary Scandinavian Reading Series

Scandinavian American Theater Company  
**Desire/Begär**  
September 19, 2011  
**The Undiscovered Country/Det Oupptäkte Landet**  
November 7, 2011  
**The Returns/Tilbakekomstene**  
January 30, 2012  
**Twenty Minutes After Death/Død Mands Kvinde**  
March 26, 2012  
**Who's Who/Kuka Kukin On**  
June 4, 2012  
**The Fundamentalist/Fundamentalisti**  
September 2 & 20, 2012  
**Gorilla**  
October 1, 2012  
**Bastards of Strindberg**  
November 12, 2012  
**Rambo**  
February 4, 2013  
**Queen C/Kuningatar K**  
March 18, 2013  
**Then Silence/Så stillhet**  
May 6, 2013

### Per Tengstrand Presents Musical Evenings with Nordic Stars

**Wilhelm Stenhammar & His Influences: Beethoven & Brahms**  
October 6, 2011  
**Holiday Concert: Future Stars**  
December 11, 2011

### Portrait of a Composer: Tobias Broström

January 24, 2012  
**Edvard Grieg & Franz Liszt**  
February 23, 2012

### Ensemble U: U Protuberances: New Estonian Music

October 10, 2011

### Keyboard Conversations® with Pianist Jeffrey Siegel: Concerts with Lively Commentary

**Anniversary Celebration!**  
November 10, 2011  
**A Beethoven Bonanza!**  
January 12, 2012  
**From Art to Heart: The Romantic Music of Liszt**  
March 8, 2012  
**A Love Triangle; Music of Robert Schumann, Clara Schumann, and Johannes Brahms**  
April 12, 2012  
**Northern Neighbors**  
November 26, 2012  
**The Sensuous Sonorities of Debussy**  
January 24, 2013  
**Schubert in the Age of the Soundbite**  
April 18, 2013  
**Bach and the Romantics**  
May 16, 2013

### Linda Hedlund, Romantic Sounds from the Past

November 21, 2011

### counter)induction, Listening in Suomi: Magnus Lindberg and the New Finnish Sound

January 23, 2012

### Sæunn Þorsteinsdóttir

February 2, 2012

### New York Scandia Symphony Presents Scandinavian Masterworks

March 22, 2012

### Triinu Taul

April 14, 2012

### Accordionist Veli Kujala

April 26, 2012

### Dance + Film/Pontus Lidberg

**MorphosesInsights**  
Pontus Lidberg  
May 3, 2012  
**MorphosesStreams: WITHIN (Labyrinth Within)**  
October 23, 2012

### The Raven's Kiss: An Operatic Tale of Iceland

May 15, 2012

### Allusions to Seasons and Weather: Music from a Year in Norway with ASF Fellow Michael Straus

May 31, 2012

### Scandinavian Summer Series

**Ögmundur Þór Jóhannesson**  
June 14, 2012  
**Guðrið Hansdóttir**  
June 21, 2012  
**Sunna Gunnlaugs Trio**  
June 28, 2012  
**Eivind Opsvik Overseas**  
July 12, 2012  
**Naja Rosa**  
July 19, 2012  
**Aleksi Ranta**  
July 26, 2012  
**Tuija Komi**  
August 2, 2012

### The Norwegian Girls' Choir

June 26, 2012

### Danish String Quartet

October 11, 2012

### Jens Elvekjaer

October 12, 2012

### The Confession of a Fool: Nordic Chamber Opera

October 25, 2012

### Music on Park Avenue: Evenings with Pianist Per Tengstrand

**Homage to the Piano: Schubert, Mozart, & Chopin**  
October 18, 2012  
**Cello Fire from Iceland**  
November 15, 2012  
**Rising Stars**  
December 9, 2012  
**Two Pianos are Better than One**  
January 31, 2013  
**Finnish Tango!**  
February 21, 2013

Star Violinist Soovin Kim  
March 26, 2013  
A Swedish Summer Night  
June 6, 2013

Danish String Quartet  
January 17, 2013

Greip  
February 28, 2013

Nordic Cool Comes to New York  
Nordic Sessions  
March 2, 2013  
Skaran  
March 4, 2013  
The Reykjavik Wind Quintet  
March 7, 2013  
Olli Hirvonen Quartet/ASF Fellows Concert  
March 14, 2013

New York Scandia Symphony presents  
Strings of Scandinavia  
April 4, 2013

Nordic Midsummer with Roger  
Hinchcliffe, Cales Dyberg, and Svante  
Engblom  
June 20, 2013

Hirvonen/Cohen/Goldbas  
June 27, 2013

## LECTURES & SYMPOSIA

Lectures at Scandinavia House continue to bring together Americans and Scandinavians to learn about and discuss a wide variety of topics and issues. These ranged from the future of the Arctic to emerging Finnish architecture, from Viking settlements in North America to contemporary Nordic crime fiction, from classical to emerging writers, and from economics to public affairs. Lecture series were also presented in conjunction with major exhibitions and a major symposium on early childhood development in the Nordic countries complemented the re-opening of the Heimbold Family Children's Playing and Learning Center.



Sjórn



Monika Fagerholm



A Voyage Around the North Pole -  
Thorleif Thorleifsson



Jan Egeland

### North by New York: New Nordic Art

Talk by Curator Robert Storr  
July 19, 2011

### Science as an Instrument for Peace

A Curtis L. Carlson Centennial Lecture by Dr. Torsten Wiesel  
October 3, 2011

### Nordic Perspectives on Caring and Teaching in Early Childhood: Implications for Success in School

November 11-13, 2011

### Programs related to the *Luminous Modernism: Scandinavian Art Comes to America, 1912* exhibition

#### The 1912 Scandinavian Exhibition: Modern Art Before the Armory Show

Lecture by Curator Dr. Patricia Berman  
October 22, 2011

#### Hammershøi & His Contemporaries

Lecture by Dr. Kasper Monrad  
October 29, 2011

#### The Young Radical at 50: Edvard Munch in 1913

Lecture by Dr. Patricia Berman  
November 17, 2011

#### Collecting the Swedish Landscape Then & Now

Lecture by David Werner and Dr. Michelle Facos  
January 1, 2012

#### Art in Finland, 1912

Lecture by Janet Rauscher  
January 19, 2012

#### Universal Truths and Local Fictions: Nordic Art on the Edge

Lecture by Dr. Patricia Berman  
January 26, 2012

#### Regional Modernism: New Art in Scandinavia, 1880-1912

A Symposium on Early Modern Nordic Art  
February 11, 2012

### August Strindberg and His Turbulent Life

Lecture by Lena Einhorn  
November 27, 2011

### Nordic Crime Literature

#### The Glitter Scene

Monika Fagerholm in Conversation with Michael A. Orthofer  
February 7, 2012

#### Easy Money

Jens Lapidus  
April 9, 2012

### Newly Drawn: Emerging Finnish Architects

#### Finnish Architecture in Norway: Kilden Performing Arts Centre with Architect Juho Grönholm

February 14, 2012

#### Anttinen Oiva Architects: Recent Works

March 14, 2012

### Economic Trends into the Coming Century

#### Fifth Nordic Investment Bank Economic Symposium

February 16, 2012

### Northern Influences: Americans Look at Great Nordic Writers

#### Selma Lagerlöf's The Saga of Gösta Berling

Paul Norlen and Jennifer Watson

February 27, 2012

### The Tale of Uummannaq

Galya Morrell, Joel Spiegelman, and Ole Jørgen Hammeken  
March 1, 2012

### Authors in Conversation

Yrsa Sigurðardóttir and Elizabeth Hand  
March 27, 2012

### From Neutral Voice to Active Partner: Sweden's Changing Role in World Politics

ASF Visiting Lecturer Jan Joel Andersson  
April 16, 2012

### Stieg Larsson and Me

Lecture by Eva Gabriellsson  
May 3, 2012

### Barriers to Health Care for Mental Illness in Poor Countries

ASF Visiting Lecturer Lena Andersson  
October 2, 2012

### A Voyage Around the North Pole: Modern Exploration and Climate Change

Panel discussion with Thorleif Thorleifsson and Mari Archer Sæther  
October 4, 2012

### In Search of First Contact: The Vikings of Vinland

Lecture by Annette Kolodny  
October 9, 2012

### Just a Tiny Piece of Freedom

ICORN (International Cities of Refuge Network); Lecture by Anna Funder  
October 22, 2012

### Programs related to the *Saga-Sites: Landscapes of the Icelandic Sagas* exhibition

#### The Sagas of Icelanders

A Curtis L. Carlson Centennial Lecture by Jane Smiley  
November 13, 2012

#### Song of the Vikings: Snorri and the Making of Norse Myths

Lecture by Nancy Marie Brown  
December 3, 2012

#### The Saga-Sites of Iceland: A 21st Century Pilgrimage

Dr. Emily Lethbridge  
January 5, 2013

#### The Future of the Arctic: A New Source of Riches

Sønsteby/Whist Lecture by Dr. Olav Orheim  
January 10, 2013

#### Anders Zorn: A European Artist Seduces America

Lecture with Curator Oliver Tostmann  
February 5, 2013

### Programs related to the *New Wave Finland: Contemporary Photography from the Helsinki School* exhibition

#### The Shimmer of Possibility: The Helsinki School and the Expansion of Photography

Lecture with Lyle Rexer  
February 19, 2013

#### On the Helsinki School

Curator Timothy Persons and Helsinki School Artists in Conversation  
April 2, 2013

### 100 Years Of ASF: How Has the World Changed Over the Last Century?

A Curtis L. Carlson Centennial Lecture with Jan Egeland  
March 11, 2013

### Strindberg and Friends

A Tribute in Memory of Harry G. Carlson  
March 19, 2013

### Nordic Outbreak

Symposium in conjunction with the Streaming Museum's Nordic Outbreak: Confronting Tales, Futures and Memories  
April 6, 2013

### Programs related to the *MUNCH | WARHOL and the Multiple Image* exhibition

#### MUNCH | WARHOL Symposium: Collectors, Curators, and Connoisseurs

April 27, 2013

#### Munch and Warhol: Contemporary Reflections

Conversation with Francesco Clemente and Lisa Yuskavage, moderated by Robert Storr  
May 11, 2013

#### Multiplication, Addition, Subtraction: Warhol, Munch, and the Multiplied Print

Dr. Patricia Berman  
June 17, 2013

#### Portraits and Self-Portraits in the Art of Warhol

Dr. Reva Wolf  
June 25, 2013

### Sjón: A Book Talk

Introduced by Björk  
May 9, 2013

---

## LANGUAGE CLASSES

Classes in Danish, Norwegian, and Swedish were offered each semester at Scandinavia House in conjunction with New York University's School of Continuing and Professional Studies.

## SCANDINAVIA HOUSE PROGRAM FUNDS

The following funds, held by the ASF on a long-term basis, provide support for Scandinavia House programs:

The Louise and Karl Andren Fund for Musical Performance • The Bonnier Family Fund for Contemporary Art • The Victor Borge Hall Endowment Fund • The Curtis L. Carlson Distinguished Lecture Series Fund • The Centennial/Second Century Fund • The Edith Coulter Fund • Dunard Fund USA • Heimbald Children's Center Fund • The Icelandic Cultural Fund • The F. Donald Kenney Fund for Visual Arts • The Elle Leppälä Kronquist from Kuru, Finland, and William Kronquist from Narpes, Finland, and Dr. Laura Kronquist Mesaros Memorial Endowment Fund • Asbjørn Lunde Fund in Memory of Karl and Elisa Lunde • The Norwegian Centennial Cultural Fund • The Nordic Investment Bank Fund • The Barbro Osher Pro Suecia Foundation Young Artists Performance Endowment Fund • The Hilppa Roby Fund for Finnish Cultural and Educational Programs at Scandinavia House

## PROGRAMS FOR CHILDREN & FAMILIES

Scandinavia House features regular programs for children and families, including access to the Heimbold Family Children's Playing and Learning Center, a colorful, welcoming environment where children and their caregivers can learn about the history and culture of Scandinavia through books, toys, costumes, and workshops. Other children's programs celebrated Nordic heritage and culture through music, films, performances, and interactive workshops.

### Storytelling with the Hans Christian Andersen Storytellers

*Classic Tales and Rare Gems from Hans Christian Andersen (10/1), Stories from Norway & Beyond with Songs and Banjo Music (11/5), Scandinavian Holiday Stories (12/10), Stories from Sweden & Beyond (1/14), Love Stories from Scandinavia (2/11), Stories from Scandinavia (3/10), Stories from Norway (4/14), Secrets from the Forests of Scandinavia (5/14)*

### Scandinavian Sing-Along

September 24, October 15, November 19, December 10 & January 21, 2012

### Young Voices from Norway: A Family Show

with stand-up Artist Tommy Steine & Skedsmo Voices Children's Choir  
October 8, 2011

### Sampo, a Boy from Lapland/Sampo Lappalainen

Puppet Theatre Sytkyt  
October 29, 2011

### Luminous Modernism Children's Workshops with the Salvadori Center

Kiruna Church  
November 5, 2011  
Dragon Style  
January 14, 2012

### Swedish Christmas Children's Workshop

December 1, 2011

### Fastelavn

February 18, 2012

### Uumannaq Music presents Greenland Children's Day

March 3, 2012

### Design Your Own City Block: Active Design Workshop

With the Center for Architecture Foundation  
March 24, 2012

### Jewelry Workshop for Kids

With Designers Piia Keto & Marjo Kuusinen of Kaksitvå  
May 12, 2012

### A Family Midsummer Celebration

June 20, 2012

### Playtime With Hildur & Lise

Weekly Workshops for Toddlers  
September 18 - November 27, 2012  
February 5 - May 22, 2013

### Discovering Iceland through Art and Story

Art Workshops With Pratt Institute Art Educators presented in conjunction with the exhibition *Saga-Sites: Landscapes of the Icelandic Sagas*  
September 29, October 20, October 27, November 3, November 10 & November 17, 2012

### Storytelling with the Hans Christina Andersen Storytellers

*The Tail of the Magic Cow and other stories (10/13), Vinlander Saga, (11/10), The Night Troll and other stories (12/8), Gudrun of Laxdæla's Saga (1/12), Stories from Sweden and Beyond (2/23), Gudmund on the Hillside & other Norwegian stories (3/9), Classic Tales and Rare Gems from Hans Christian Andersen (4/13), The Kalevala, Stories from Finland, & Beyond (5/11)*

### Oh, Hello Baby

Minna Krook. Dans  
November 17, 2012

### Swedish Christmas Children's Workshop

December 1, 2012

### Scandinavian Sing-Along

October 20, November 10, December 8, 2012 & January 19, February 16, March 16, April 20 & May 18, 2013

### Making the Familiar Strange

Art Workshops With Pratt Institute Art Educators presented in conjunction with the exhibition *New Wave Finland: Contemporary Photography from the Helsinki School*  
February 9, February 16, February 23, March 2, March 9, March 16 & March 23, 2013

### Transformations & Explorations: From The Scream and Beyond

Art Workshops With Pratt Institute Art Educators presented in conjunction with the exhibition *MUNCH | WARHOL and the Multiple Image*  
April 6, April 13, April 20, April 27, May 4, May 11 & May 18, 2013

### A Family Midsummer Celebration

June 20, 2013



Oh, Hello Baby / Minna Krook.Dans



Heimbold Family Children's Playing and Learning Center



Sampo, a Boy from Finland / Sampo Lappalainen



Art Workshop with Pratt Institute Art Educators

## PROGRAMS FOR CHILDREN & FAMILIES



Tina Buckman, Scandinavia House/The American-Scandinavian Foundation, 2011

### Play—Reinvented and Reimagined

In September 2011, a reimagined and redesigned Heimbold Family Children’s Playing and Learning Center opened at Scandinavia House. The changes were made possible by the generous support and inspiration from ASF Trustee Monika Heimbold who was responsible for the original children’s center when Scandinavia House opened in 2000.

For the new center, the focus was on creating a joyful place that gives children a feeling of belonging, and recognizes that communication, play and learning are intertwined. The new space offers an activity room and a sensory room, with design highlights such as a giant mushroom play house, costumes for dress-up, a traditional Scandinavian country kitchen and grocery shop, a reading nook, a custom Lego corner, a landscaped Brio train table, and a climbing area.

The space was designed with the help of teachers at the renowned Tappan Preschool in Stockholm, and interpreted by the creative work of Koko Architecture+Design in New York. Within months of its reopening, the Heimbold Family Children’s Playing and Learning Center had become extremely popular and was named “the Best Indoor Playspace” by *New York Magazine*.



### Early Childhood Symposium

The ASF hosted a two-day symposium in November 2011 on *Nordic Perspectives on Caring and Teaching in Early Childhood*, presented in collaboration with the Sarah Lawrence College Child Development Institute. This was the first event of its kind in the U.S. and was intended to begin an important dialogue between Americans and Scandinavians.

The symposium featured a panel of educators and experts from the Nordic countries along with the leading American experts on Nordic early childhood development, and offered keynote presentations, panel discussions, and small break-out sessions. Attendees included practitioners and academics in the field of early childhood education from across the United States.

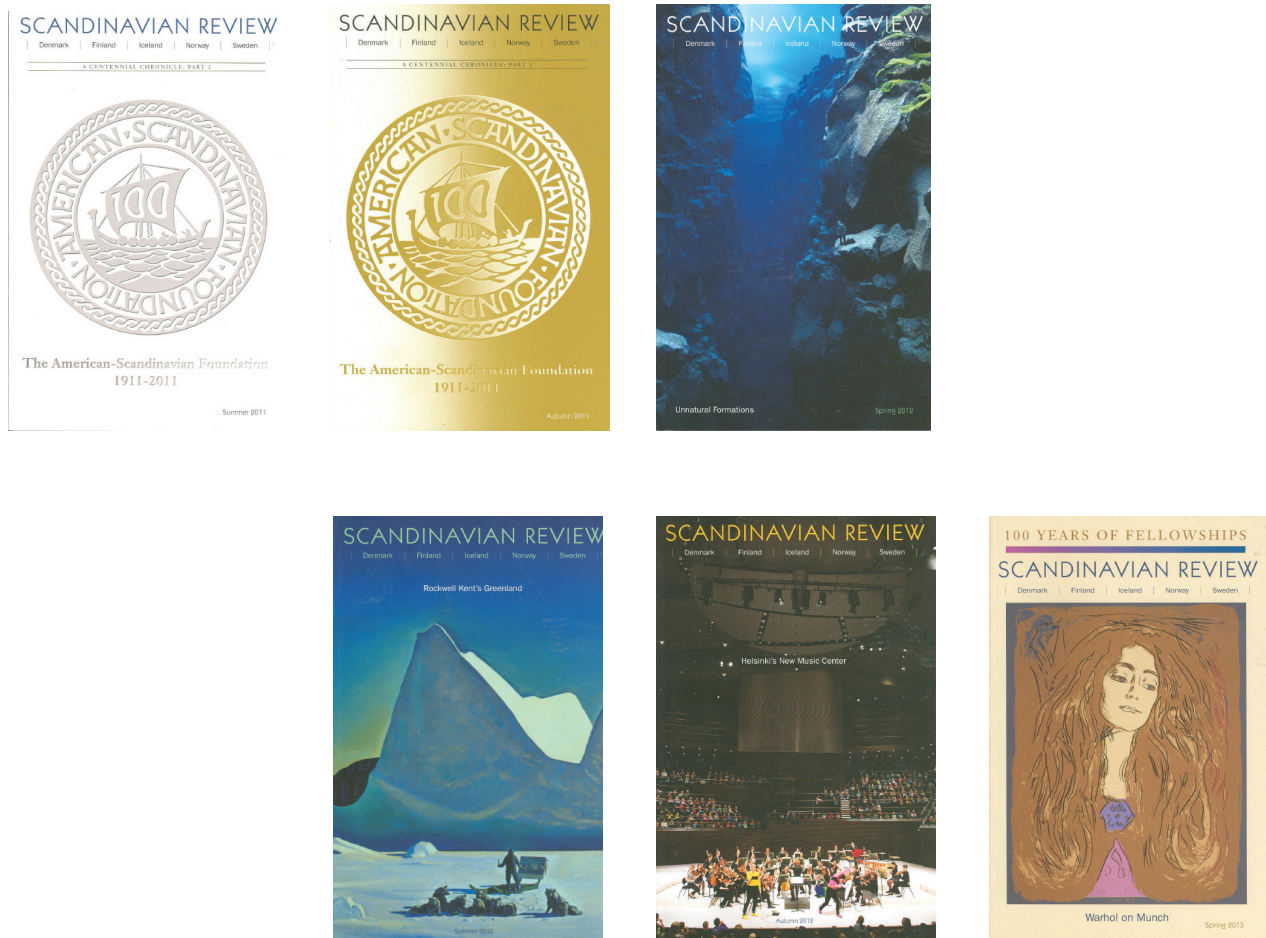
The conference was facilitated by ASF Trustee Monika Heimbold, along with Sara Wilford, Director of the Sarah Lawrence College graduate program in the Art of Teaching and faculty member of its Child Development Institute.



Tina Buckman, Scandinavia House/The American-Scandinavian Foundation, 2011

# PUBLICATIONS

*Scandinavian Review* has been the ASF's flagship publication since 1913, and is read by ASF members, donors, friends, library patrons, and others interested in the Nordic region. The illustrated journal presents a variety of articles on life and culture in the Nordic countries along with presentations on current exhibitions at Scandinavia House, and frequently looks back at highlights in Nordic or ASF history. *Scandinavian Review* also includes a regular New Nordic Book Tips section and a Scanscope column featuring news and anecdotes from the Nordic countries. Each year it also publishes excerpts of winning entries in the ASF annual Translation Prize competition.



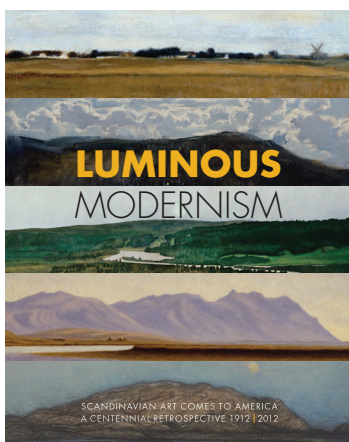
Three issues of *Scandinavian Review* were published during each of the two fiscal years: 2012 and 2013. The Summer and Autumn 2011 issues were the final two installments in a series of three issues celebrating the American-Scandinavian Foundation's Centennial. The Spring 2013 issue celebrated the centennial of the ASF's Fellowships and Grants program with a series of articles written by recent Fellows in the arts.

The ASF also publishes a quarterly newsletter, *SCAN*, which reports on ASF activities and programs, along with news from the Nordic region and Scandinavian events throughout the United States. *The Longboat* is a special newsletter for those who have received ASF fellowships and grants and includes information on new awards as well as accomplishments of former Fellows.

The American-Scandinavian Foundation also published three exhibition catalogues in conjunction with major exhibitions during the period of this report.

### *North by New York: New Nordic Art*

The exhibition was a focused survey of contemporary Scandinavian art that showcased the work of 14 artists and encompassed a wide range of media— including painting, drawing, and photography, as well as performance, video, and installation art. The exhibition was curated by internationally renowned scholar and critic Robert Storr, with art historian and independent curator Francesca Pietropaolo; the catalogue includes their introductory essay, “Nordic Art Unbound.”

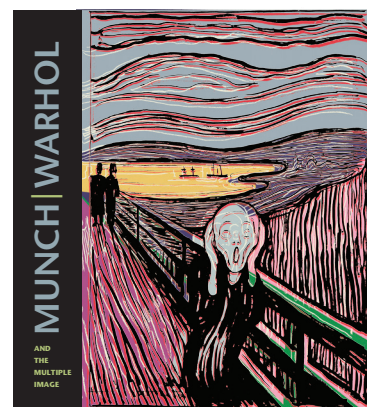


### *Luminous Modernism: Scandinavian Art Comes to America, 1912*

This fully-illustrated catalogue was based on the international loan exhibition that featured paintings by Edvard Munch, Vilhelm Hammershøi, Anders Zorn, and other Scandinavian modernists. The exhibition brought together 48 works by Nordic artists who embraced and pioneered the transformative aesthetic innovations that swept the European continent during the late 19th and early 20th centuries. The catalog includes essays by exhibition curator Dr. Patricia G. Berman and other scholars of Scandinavian art.

### *Munch | Warhol and the Multiple Image*

Edvard Munch and Andy Warhol, two of the 20th century’s most prolific and inventive printmakers, are closely examined in this catalog that accompanied the exhibition that was presented as part of Munch 150, the sesquicentennial celebration of Munch’s birth. It focuses on four lithographs by Munch: “The Scream,” “Madonna,” “The Brooch. Eva Mudocci,” and “Self Portrait” and a little known but extraordinary series of unique, unpublished screen prints created by Warhol in 1984, that appropriated and reformulated Munch’s motifs.



# SPRING GALA 2013

April 26, 2013



H.M. Queen Sonja of Norway and Edward Gallagher, ASF President



Glenn Lowry, Director of MoMA; James Rosenquist with his daughter, Lily Rosenquist, and wife Mimi Thompson; Ragnar Meyer-Knutsen and Laureen Knutsen, Gala Vice-Chairs; Arthur Zeckendorf, Gala Vice Chair and ASF Trustee; Monika Heimbold, Gala Co-Chair and ASF Trustee; Hon. Charles A. Heimbold; Inger G. Ginsberg, Gala Co-Chair and ASF Trustee; Lise Stolt-Nielsen, Gala Co-Chair and ASF Trustee; Kjersti Reitan; Bernt Reitan, ASF Deputy Chairman; Bente Svensen Frantz, ASF Chairman of the Board



Honorees James Rosenquist, artist, and Glenn Lowry, Director of MoMA



ASF Trustees Thor Thors, Jr. and Lena Björck Kaplan



ASF Trustee Richard E. Oldenburg, who introduced Cultural Award winner James Rosenquist, and Mary Ellen Oldenburg

Friends and supporters of the ASF gathered together on April 26, 2013, at The Pierre Hotel in New York City, for an evening of dinner, dancing, music, and American-Norwegian friendship at the ASF's Spring Gala. The evening welcomed H.M. Queen Sonja of Norway and also celebrated the opening of *Munch | Warhol and the Multiple Image* at Scandinavia House. The Spring Gala Co-Chairs were Inger G. Ginsberg, Monika Heimbold, and Lise Stolt-Nielsen. The Vice-Chairs were Jane Erko, Laureen and Ragnar Meyer-Knutsen, and Arthur Zeckendorf. The Corporate Vice-Chairs were Bo Sonnichsen, CFO, Maersk Line-North America, and Stuart E. Graham, Chairman of the Board, Skanska. The evening honored The Museum of Modern Art (MoMA) with the ASF Gold Medal, in recognition of its extraordinary efforts to increase the awareness and appreciation of Scandinavian art and

design in the United States, and artist James Rosenquist, internationally acclaimed abstract painter who was a leading figure in establishing pop art as a movement, with the ASF Cultural Award. Both were formally presented by H.M. Queen Sonja.

The Master of Ceremonies for the evening was Margaret Juntwait, radio personality and host of the Metropolitan Opera international radio broadcast. A very special performance by The Collegiate Chorale was led by Ted Sperling, featuring soloists Judy Kaye, Jason Daniele, and Alexandra Silber in selections from *Song of Norway*, an operetta comprised of the music of Edvard Grieg. This performance was a preview of their concert at Carnegie Hall on April 30, 2013. The evening was capped off with dancing to music by Vince Giordano and the Nighthawks.

# AWARDS & PRIZES

The ASF recognizes outstanding achievement in a number of fields through special prizes.

## Gold Medal

The ASF Gold Medal, its highest honor, was awarded in April 2013 to **The Museum of Modern Art**, New York. It recognized the museum's extraordinary efforts to increase the awareness and appreciation of Scandinavian art and design in the United States. The award was presented at the ASF's 2013 Spring Gala and was accepted on behalf of MoMA by Director Glenn Lowry.

*The American-Scandinavian Foundation's Gold Medal recognizes persons or institutions for outstanding achievement in the promotion of the objectives of the Foundation.*

## Cultural Award

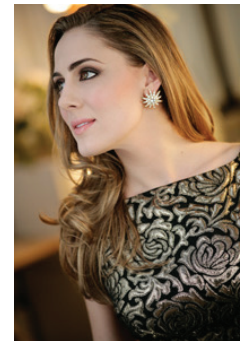
The ASF Cultural Award was presented to **James Rosenquist**, an American artist of Norwegian and Swedish descent, also at the ASF's Spring 2013 Gala. Mr. Rosenquist, who was a leading figure in establishing pop art as a movement, is known for his masterful use of abstract painting techniques. He has achieved international acclaim and his work has been shown throughout the United States, the Nordic countries, and beyond.

*The American-Scandinavian Foundation's Cultural Award pays tribute to individuals or organizations whose achievement in the fields of art and culture has significantly furthered understanding between the United States and the Scandinavian countries.*

## Birgit Nilsson Award

The 2013 Birgit Nilsson Award was awarded to **Sydney Mancasola**. A second-year resident artist at Philadelphia's Academy of Vocal Arts, Ms. Mancasola received a Bachelor of Music degree from Oberlin Conservatory of Music in 2010.

*The Birgit Nilsson Award was established in 1988 on the occasion of the 350th anniversary of New Sweden, the first Swedish settlement in the U.S. It was endowed through the proceeds of a gala concert in April of that year honoring the legendary Swedish soprano Birgit Nilsson. It is now awarded to a finalist in the Metropolitan Opera National Council Auditions.*



## ASF Translation Prizes

**Michael Meigs** (Austin, Texas) was awarded the ASF Translation Prize in October 2011 for his translation from the Swedish of excerpts from *The Dean (Dekanen)*, a novel by Lars Gustafsson.

**Martin Aiken** (Søro, Denmark) was awarded the ASF Nadia Christensen Prize in October 2012 for his translation from the Danish of excerpts from the novel *Hildegard* by Anne-Lise Marstrand-Jorgensen.

**Misha Hoekstra** (Aarhus, Denmark) was awarded the ASF Leif and Inger Leif and Inger Sjöberg Prize in 2012 for his translation from the Danish of excerpts from the novel *Du forsvinder* by Christian Jungersen.

*The ASF Translation Prizes are the only prizes awarded regularly in the U.S. for translation into English of Nordic literature. Established in 1980, these awards recognize outstanding translation of prose or poetry by Danish, Finnish, Icelandic, Norwegian, or Swedish authors born after 1800. Through its annual competitions, the ASF has recognized outstanding work by more than 50 translators.*

## The American-Scandinavian Foundation thanks our supporters...



...and invites you to join us!

### WAYS TO SUPPORT THE AMERICAN-SCANDINAVIAN FOUNDATION

Annual contributions help the ASF to sustain its century-long mission to promote international understanding through educational and cultural exchange between the United States and Denmark, Finland, Iceland, Norway, and Sweden.

#### CASH

Writing a check is the simplest way to make a gift to the American-Scandinavian Foundation. For income tax purposes, the gift is deductible to the extent provided by the law.

#### PLEDGES

We ask that all annual pledges be fulfilled by the close of our fiscal year, which is June 30. Pledges to the Centennial/Second Century Fund may be paid over several years.

#### MATCHING GIFTS

If you, or your spouse, are affiliated with one of the many matching gift companies, you can double or even triple the value of your annual gift. Please take a moment to check with your company's Human Resources office—it will make a difference.

#### GIFTS OF SECURITIES

Gifts of appreciated securities are always welcome and may offer significant tax advantages to the donor.

#### PLANNED GIFTS

There are several ways to make planned gifts to the ASF and obtain tax benefits of charitable giving. The ASF welcomes the opportunity to review planned giving alternatives and approaches with you.

**FOR MORE INFORMATION** on ways to give to the American-Scandinavian Foundation, how to transfer stock, or discuss planned giving please email [dev@amscan.org](mailto:dev@amscan.org) or call 212.779.3587.

# CENTENNIAL CAMPAIGN

Since its founding, The American-Scandinavian Foundation has provided unique educational and cultural experiences that promote understanding between the United States and the five Nordic countries: Denmark, Finland, Iceland, Norway, and Sweden. Through fellowships, grants, internships, publications, exhibitions, and other cultural programs, the Foundation offers an unparalleled opportunity for cross-cultural conversation and exchange.

In recognition of its 100th Anniversary, the ASF launched a Centennial/Second Century Campaign. This campaign enables donors to provide a legacy of support for a wide range of projects, including fellowships and internships for young people; educational and cultural programs at Scandinavia House and beyond; and initiatives to enhance the capabilities of Scandinavia House and expand the ASF's international outreach. By making a contribution to the Campaign, donors help to ensure that the ASF remains a leader in international understanding and cooperation for generations to come. A list of donors to the ASF Centennial/Second Century Campaign, as of June 30, 2013, follows:

## *\$500,000 and up*

Hon. Charles and Monika Heimbold  
Barbro Osher Pro Suecia Foundation  
The Nadia and Jacob Stolt-Nielsen Benevolent  
Fund/Lise Stolt-Nielsen and Mr. and Mrs. Jacob  
Stolt-Nielsen

## *\$250,000 to \$499,999*

DnB NOR AS New York Branch  
Inger G. and William B. Ginsberg

## *\$100,000 to \$249,999*

Alcoa Foundation  
Pontus Bonnier  
Hon. and Mrs. Edward E. Elson  
The Hognander Family Foundation  
Lena and Gilbert Kaplan  
Asbjørn Lunde  
A.P. Møller Relief Foundation/Ane  
Mærsk Mc-Kinney Uggla  
The Roby Foundation  
SAS Scandinavian Airlines  
Björn Wahlroos

## *\$25,000 to \$99,999*

Bård E. Bunaes  
Daphne L. Davidson and Thomas R. Schwartz - in  
memory of Arthur O. and Corinne Davidson  
Trond S. Jensen  
Linda and H. Gerald Nordberg  
Bernt Reitan

## *\$500 to \$24,999*

Karl and Louise Andrén  
Hon. William McC. Blair, Jr.  
Bernt O. Bodal  
Victor B. and Paula Borge  
Anders Brag  
W. Grant Callow  
Lynn Carter  
Hon. Charles E. Cobb, Jr.  
Alpo Franssila Crane  
Birgitta T. Dill  
Sven Anders Ekernäs  
Inger McCabe Elliott  
Richard and Toni Feinbloom  
Michael and Sanna Feirstein  
Aili and Austin Flint  
Bente Svensen Frantz  
Allan W. and Judy Fulkerson  
Edward P. Gallagher  
Henry P. Godfrey and Ginger Schnaper  
Magnús Gústafsson  
Hon. Charles S. Haight, III  
Nils Hasselmo  
Flemming and Judy Heilmann  
Stig Høst  
Niels W. Johnsen  
John S. and James L. Knight Foundation  
Eugene Kokot, Esq.  
Kaarina Koskenalusta  
Peter F. Krogh  
Øivind Lorentzen, Jr.  
Øivind Lorentzen III  
Earle I. Mack Foundation, Inc.  
Helen W. Marx

Michael Mathews  
Morten Nicolaisen  
Richard E. Oldenburg  
Hon. Lyndon L. Olson, Jr.  
Dr. Rose-Marie G. Oster  
Steven B. Peri, Esq.  
Kristján T. Ragnarsson, M.D.  
Lennard Rambusch, Esq.  
Martin E. Segal, in honor of Edward P. Gallagher  
Chris and Sally Sonne  
James M. Stewart  
Hon. and Mrs. Robert D. Stuart  
Inger Tallaksen  
Göran Thorstensson  
Helgi Tómasson  
Jón Tómasson  
Joan M. Warburg  
Robert Willumstad  
Arthur and Constance Zeckendorf Foundation

## **IN-KIND GIFTS**

Barbro Osher Pro Suecia Foundation  
Consulate General of Finland, New York  
Consulate General of Sweden, New York  
Finnair Cargo  
Fritt Ord Foundation  
Furthermore: A Program of the J.M. Kaplan Fund  
Icelandair Cargo  
Hon. John L. Loeb, Jr.  
Nordic Culture Fund/Nordisk Kulturfond  
Robert and Joyce Menschel Family Foundation  
Robert Lehman Foundation, Inc.  
Royal Danish Consulate General, New York  
Royal Norwegian Consulate General, New York

# HONOR ROLL OF DONORS

The American-Scandinavian Foundation is grateful to the many individuals, corporations, and foundations that have generously contributed financial and in-kind gifts. These donations ensure that the ASF will continue to promote international understanding through educational and cultural exchange between the United States and the five Nordic nations. The following list of donors reflects actual gifts made to the Foundation during the two-year period from July 1, 2011–June 30, 2013.

## PRESIDENT'S CIRCLE

*\$ 100,000 and above*

Inger G. and William B. Ginsberg  
Hon. Charles A. and Monika Heimbold/  
The Heimbold Foundation  
Hon. and Mrs. John L. Loeb, Jr.  
Norway House Foundation  
Barbro Osher/The Barbro Osher Pro Suecia  
Foundation  
Estate of Philip W. Pfeifer  
Vilhelm M. Reimann Trust  
Scandinavian Seminar

## LEADERS

*\$ 25,000 and above*

Alcoa Inc.  
Peter Baldwin and Lisbet Rausing  
Anders and Amy Brag  
Dr. Ulrik Juul Christensen  
DNB Bank ASA  
Jane Erkko  
Fritt Ord Foundation (Institusjonen Fritt Ord)  
Laureen and Ragnar Meyer-Knutson  
Maersk Inc.  
Nokia Group  
The Royal Norwegian Consulate General in New York  
Sanoma Oyj  
Scan | Design Foundation by Inger & Jens Bruun  
The Peter Jay Sharp Foundation  
Stuart E. Graham, Chairman of the Board, Skanska  
Lise Stolt-Nielsen  
The G. Unger Vetlesen Foundation  
Wallenius Lines Holding Inc./Raymond P. Ebeling  
Arthur Zeckendorf

## PATRONS

*\$ 15,000 and above*

Mr. and Mrs. Per Arneberg  
Christina Lang Assael/The Assael Foundation  
The Bergesen Foundation  
Alpo F. and Marjorie Crane/The Raymond E. &  
Ellen F. Crane Foundation  
David E.R. Dangoor/Consulate General of  
Sweden in New York  
Anders Ekernäs  
Bente Svensen Frantz  
The Estate of James L. Howard  
Trond S. Jensen  
Hon. and Mrs. Earle I. Mack  
Linda and H. Gerald Nordberg  
Nordea Bank  
Hilppa and Joe Roby/The Roby Foundation  
SAS, Scandinavian Airlines of North America  
Martin E. Segal  
Statoil North America, Inc.  
Robert B. Willumstad  
Hon. Michael Wood and Judy Wood

## SPONSORS

*\$ 10,000 and above*

Actavis Inc.  
Anonymous  
Atlantika, Inc.  
Ingrid I. Bernhard  
Danske Markets Inc.  
Birgitta Tyra Dill  
Eva and Glenn Dubin  
Carl Gustaf Ehrnrooth  
The Per and Astrid Heidenreich Family Foundation  
Innovation Norway  
Lena and Gilbert Kaplan  
Donald and Elizabeth Kramer  
J. Lauritzen (USA) Inc.  
The Vincent Mulford Foundation  
Bernt and Kjersti Reitan  
The Embassy of Sweden

## BENEFACTORS

*\$ 5,000 and above*

ASSA ABLOY Americas  
Brooke Brown Barzun Charitable Foundation  
Nelson Blitz, Jr. and Catherine Woodard  
Barbara and Bård Bunaes/The Bård and Barbara  
Bunaes Family Fund  
Hon. and Mrs. James P. Cain  
Lars Christensen  
Dr. Daphne Davidson and Thomas Schwartz  
Inger McCabe Elliott  
Hon. and Mrs. Edward E. Elson  
Michael and Sanna Feirstein  
The Embassy of Finland  
Focal Point, Inc.  
FRAME - Foundation  
Dr. Jonathan and Jennifer Gillen-Goldstein  
Cecilia E. K. Hahn  
Lisa Resling Halpern and Nikos Notias  
Holland & Knight  
Hurtigruten ASA  
Icelandair  
Íslandsbanki  
Timothy Jacob Jensen  
Lars E. Johansen  
John S. and James L. Knight Foundation  
KONE Corporation/ Klaus T. Cawén  
Kaarina Koskenalusta, CEO, Global Connections, Inc.  
Michael and Cecilia Mathews  
Lisbeth R. McCoy  
Hon. Bonnie McElveen-Hunter  
R.K. Mellon Family Foundation  
John A. Morgan and Connie Holst Morgan  
Thomas S. Murphy  
Novo Nordisk Inc.  
Össur HF  
Dr. and Mrs. Sigurdur R. Petursson  
Prudential Douglas Elliman Real Estate/Bettina  
Schriver  
Dr. and Mrs. Kristján T. Ragnarsson

Ramboll Gruppen A/S  
Sheila Johnson Robbins  
SEB New York Branch  
Skuld North America Inc./Charles B. Anderson  
Mr. and Mrs. James M. Stewart  
Phillip Street  
Bente Strong  
Diana C. Symonette  
TORM  
Agnes Ahlander Turner and Jedediah H.K. Turner  
Mr. and Mrs. James D. Wolfensohn

## CONTRIBUTORS

*\$ 1,000 and above*

Ira and Mary Lou Alpert  
The American Scandinavian Society of New York  
Mrs. Erle A. Andersen  
Karl F. Andersen  
Hanne and Lars Andersen  
Mr. and Mrs. Roger E. Anderson  
Karl and Louise André  
Anonymous  
Arion Bank hf  
Dr. Örn Arnar  
Tor and Jean Arneberg  
D. Euan and Angelica Baird  
Malena Belafonte  
Martin and Irene Berman  
Hon. Stuart A. Bernstein  
Bikuben Foundation New York  
Åsa and Alfred Bisset  
Hon. and Mrs. William McC. Blair, Jr.  
The Blue Lagoon  
Pål Boger  
Mr. and Mrs. Jeremiah Bogert  
Frederikke Borge  
Ronald and Nancy Borge  
Victor B. and Paula Borge  
Jean-Louis Bourgeois  
Mildred C. Brinn  
Thomas C. Brokaw  
William Grant Callow II  
Roberto Camacho  
Giosetta Capriati  
George and Janice Caraberis  
Mr. and Mrs. Edward O. Carney  
Lynn Carter  
Thomas and Chris Casey  
Hon. Charles E. Cobb, Jr./The Cobb Family  
Foundation  
Mr. and Mrs. Lars W. Colliander  
Prof. and Mrs. Juan Corradi  
Janet and James Crowle  
Stefan Dahlkvist  
Edward DeLuca  
DeWitt Stern Group  
Mark and Elisabet Dronge  
Eimskip  
Ruth and R. Lars Engelsen

Sarah G. Epstein and Donald A. Collins  
 Lisa and Peter Fagerberg  
 Fredrik Falch  
 Mr. and Mrs. Richard E. Feinbloom  
 Marna Feldt  
 Finlandia Foundation  
 Aili and Austin Flint  
 Michael and Anny Galesi  
 Edward P. Gallagher  
 Dr. and Mrs. Michael George  
 Henry P. Godfrey and Ginger Schnaper  
 Dr. and Mrs. Mark Goldstein  
 Scott Gonge  
 Cami Green-Hofstadter  
 Mary Grønner  
 Agnes Gund  
 Magnus Gustafsson  
 Hon. Charles S. Haight, Jr.  
 Mr. and Mrs. Jaakko J. Haikala  
 Paul O. Halme  
 Charlotte S. Hansen and Bjorn Tuypens  
 Peder Hanssen  
 Sonja L. Haugen  
 Baron and Baroness Ove Haxthausen  
 Flemming and Judy Heilmann  
 Law Offices of Peter L. Hessellund-Jensen  
 Jens P. Heyerdahl, d.y.  
 Betty Himmel  
 The Hognander Foundation  
 Julie Houston  
 J. W. Hulme, Esq.  
 Christopher Idler  
 Matts Ingemanson  
 Christopher Jebson  
 Laila Jensen  
 Ina Johannesen  
 Fredrick L. Johnson  
 Ronny Karlsen  
 Bruce N. Karstadt  
 Oscar Kaulen  
 The Charles & Lucille King Family Foundation  
 Marie Louise Kirk  
 Reidun and Robert Kleinbeck  
 Goran and Ann-Kathrine Klintmalm  
 Eugene and Barbara Kokot  
 Erik and Dawn Langeland  
 Anne V. Lindblom  
 Pertti and Doris Lindfors  
 Elizabeth Lindstrom  
 Pia Lindstrom  
 Jeanette Loeb  
 Mr. and Mrs. Bo W. Long  
 Øivind Lorentzen, Jr.  
 Øivind Lorentzen, III  
 Asbjørn R. Lunde  
 Ruth K. Lynford  
 Ann C. Madonia, M.D.  
 Helen W. Marx  
 Salvatore and Karen Mauro  
 Marie B. McKeige  
 Robert B. Menschel  
 Michael F. Metcalf  
 Gerald and Gunilla Morris  
 My Favorit Place, LLC  
 Christina Nemeth  
 Ole Nielsen/Scanmarket Inc.  
 Christie Nightingale  
 Ólafur J. Ólafsson  
 Richard E. and Mary Ellen Oldenburg  
 Irene M. Olsen  
 Marian C. Olsen

Hon. and Mrs. Lyndon L. Olson, Jr.  
 Rose-Marie G. Oster  
 Steven B. and Berit Peri  
 Ruth B. Perkins  
 Yvonne and Leslie Pollack  
 Dr. and Mrs. Brian Quinn  
 Monica and Olle Rabe  
 Ossi J. Rahkonen  
 Mr. and Mrs. Lennard K. Rambusch  
 Cornelia Ravenal and Mikael Södersten  
 Bonnie and Richard Reiss  
 Dr. Charles Rimpila  
 Sandra and Richard Rippe  
 Claus Rodgaard  
 Max Roseneld  
 Marie K. Ross  
 Susan Sadolin  
 Mary Salstrom and Brent Porter  
 Careen Shannon, Esq. and William Considine, Esq.  
 Gunnar H. Sigurgeirsson, Esq. and Rita Sunny-  
 Yangs, Esq.  
 Johan Skog  
 Snøhetta/ Craig Dykers and Elaine Molinar  
 Christine and Greg Solomon  
 Chris and Sally Sonne  
 Rigmor Spang  
 Christina and William Staudt  
 Ryan Steinfeld  
 Åsa Stevenson  
 Stolt-Nielsen USA Inc.  
 Stuart Family Foundation  
 Michael Student  
 John M. Sullivan  
 Mia Svensson, M.D.  
 SWEA New Jersey Chapter  
 Steven Syre  
 Inger Tallaksen  
 Drs. Anthony and Irmgard Taylor  
 Liv Tchividjian Grimsby and Emmanuel Tchividjian  
 Erik and Cornelia Thomsen  
 Bjorn Thorbjarnarson  
 Mr. and Mrs. Thor Thors, Jr.  
 Helgi and Marlene Tómasson  
 George and Kerstin Trowbridge  
 Helen Tschudi and Marianne Jacobsen  
 Kjersti B. Tufta  
 Mr. and Mrs. Klaus D. Vogt  
 Hanne von Wövern and Torkild Enevoldsen  
 Michael Wall  
 Joan M. Warburg  
 Audrey and Peter Ward  
 Grace Kennan Warnecke  
 Inger Wedin  
 Ann-Christine Westerlund  
 Dr. Pia Wikstrom  
 Sonja Winther  
 Ellen and Niki Yoshiuchi  
 Baroness Mariuccia Zerilli-Marimò

#### SUPPORTERS

*\$ 500 and above*  
 Jim and Kevin Abernathy  
 Carl D. Anderson  
 Kristina M. Armstrong  
 John M. Austin, Sr.  
 Ying Bennis  
 Rosanne S. Berman  
 Cathleen M. Cameron  
 Gary Christianson  
 Søren Clausen  
 Rita L. Cunningham

Anne S. Davidson  
 Delafeld Family Association  
 Marilyn O. Dimling  
 Katla and Thomas Donnelly  
 Yvonne Ericson Dryden  
 Peter and Jenny Eio  
 Per Falkenhall  
 Jacquin P. Fink  
 Joanne Finstad  
 Daniel Fox  
 Drude Garmann  
 Sandy Ginsberg  
 David Gogh  
 Virginia L. Gold  
 Greater Kansas City Community Fndn - Victor A.  
 Regnier Fund  
 Michael S. Hahn  
 Margrete J. Hartman  
 The Hartmann Family Foundation  
 Nils and Ann Hasselmo  
 Helena Hermarck and Niels Diffrient  
 Lillian Hess  
 International Peace Institute  
 Ulla M. Jenkins  
 Laura Justus  
 Sonja Killie  
 C. K. Korpinen  
 Christine Kucera  
 Leena K. Langeland, DMD  
 Ann M. Legreid  
 Anne Levonen  
 Bertha Lindefjeld  
 Jill R. Loomis  
 Evelyn Lorentzen-Bell  
 Lué McWilliams  
 Turid Meeker  
 Ingegerd Mundheim  
 Robert L. Newman  
 The Norwegian-American Chamber of Commerce  
 Joanna Oleson  
 Elisabeth Overend  
 Carrin M. Patman  
 Curtis C. Rice  
 Rio Tinto Alcan Iceland  
 Toshihiko Sato  
 Anthony Shenekji  
 Cathrine B. Sommerfelt-Eekels  
 Richard R. Stanley  
 Henrik M. Steffensen  
 Vibeke W. Steineger  
 Randall Ian Stempler  
 Thomas B. Tesluk  
 Anna Timone  
 Verizon Foundation  
 Sydney W. Watras  
 Clayton C. Westland/ Learning Enrichment, Inc.  
 Inger K. Witter  
 Søren Wolmar  
 Gro V. Wood  
 Michael D. Yokell  
 Dale and Rafael Zaklad  
 Bjørn Zettersten

#### IN-KIND GIFTS

Artek USA Inc.  
 FINNAIR  
 Icelandair Group  
 Microsoft Corporation  
 New York Cruise Lines, Inc.  
 Norseland Incorporated USA  
 Smörgås Chef Restaurant Group/  
 Morten Sohlberg and Min Ye

# MEMBERSHIP

The ASF Membership Program provides individuals with opportunities to discover the rich legacy of Scandinavian arts, culture, and thought, while providing vital financial support to the Foundation. The ASF currently has more than 4,000 members and supporters throughout the U.S. and around the world.

There are many great benefits offered to ASF Members at all levels of membership. Members receive yearly subscriptions to the ASF's lively and informative journal, *Scandinavian Review*, as well as the members' newsletter, *SCAN*. Members in the greater New York region and those visiting the area are encouraged to visit Scandinavia House: The Nordic Center in America. Their membership gives them free admission to exhibitions; reduced admission to all films, lectures, concerts, and children's programs; discounts in The Shop @ Scandinavia House and Smörgås Chef restaurant; and invitations to special members' events such as exhibition previews, gallery tours, and the annual Members' Holiday Party. In addition, Members with a Children's Center Pass receive access to The Heimbold Family Children's Playing and Learning Center.



Opening reception of *Unnatural Formations: Three Contemporary Photographers*  
Photos: Tina Buckman

Members Christmas Party 2012

The ASF is grateful to its many members whose support helps make possible the Foundation's many educational and cultural programs. It offers special thanks to those members listed below whose category of membership (current as of June 30, 2013) is at the Contributing Associate level or above.

## PRESIDENT'S CIRCLE

Donald and Elizabeth Kramer  
George and Kerstin Trowbridge  
Agnes Ahlander Turner and  
Jedediah H. K. Turner

## PATRON

Mrs. Birgitta Tyra Dill  
Henry P. Godfrey and Ginger  
Schnaper  
Bruce N. Hadley, Jr. and Inger E.  
Hadley  
Lance and Marjorie Lindblom  
Asbjørn Lunde  
Palle and Rita Rye  
Tara Steinfeld  
Ellen and Daniel Strickler  
Dapeng Xu

## SUSTAINING ASSOCIATE

Karin Angvald and Theodore Wallach  
Anonymous  
Benjamin Bankson  
Karin J. Barkhorn, Esq.  
Graeme Birchall  
Mildred C. Brinn  
Carol E. Domina  
Ulrika Ekman  
Fredrick L. Johnson  
Cassandra Klimp  
Alice La Prella  
Terje Lande and Mary Zamore  
Maury Newburger  
Carrin M. Patman  
Susan L. Ross  
Eric Stenshoel  
Bente L. Strong

Professor Henry and Mrs. Solidelle  
Wasser

## SUPPORTING ASSOCIATE

Nancy Aft and Sam Alfstad  
Mr. and Mrs. Per A. Arneberg  
Mildred C. Brinn  
Yvonne Ericson Dryden  
Joanne Finstad  
Suzanne Frederick  
Michael and Anny Galesi  
Mason and Kim Granger  
Mr. and Mrs. Kenneth Grant  
Jane G. Jaegersen  
Niels W. Johnsen  
Kristina R. Kittilsen  
Kerstin Lindholm  
Richard J. Lindquist  
Mikko Mäkäräinen

Gerald and Carole Makela  
Ingegerd Mundheim  
Lance and Sally Nelson  
Maury Newburger  
John M. Ogren  
Janice C. Oresman  
Rutbert D. Reisch  
Scandinavian Seminar  
Ronald Sinkkanen and Lynne Cherry  
Robert and Sally Snyder  
Nina Sommerfelt  
Mr. and Mrs. Jonathan Vaughan  
VisitDenmark  
Anna and Michael Vranos

## CONTRIBUTING ASSOCIATE

Erle A. Andersen  
Kristin Angelino and Dave Frank  
Matthew and Sara Angorn

Anonymous  
 Anonymous  
 Javeria Arif and Shahzad Qalbani  
 D. Euan and Angelica Merete Baird  
 Sonja Bartini  
 Brent Bergin and Pamela  
 Huttenberg  
 Marc and Emma Berry  
 Hemant and Pooja Bhide  
 Stephen B. Billick  
 Edwin H. Blackburn  
 Frederik Bredahl-Petersen and Aase  
 Eriksen  
 Scott and Anne Budlong  
 Donald and Ann Calder  
 Linda L. Carlson  
 John and Katherine Casida  
 Jacques and Sofia Chappuis  
 Joel Cherrytree  
 Theodore Chu  
 Miriam L. Coleman  
 Heather Conneely and Jose Barria  
 Eugene F. Corrigan  
 Rita L. Cunningham  
 Daphne L. Davidson  
 Karen F. Davidson  
 Inger P. Davis  
 Katla and Thomas Donnelly  
 Ann Bjorkman Edgar  
 Michael G. Eisenhauer  
 Mary and Paul Elliott  
 Anna Emilsdottir and Richard Rowey  
 Ruth Engelsen  
 Vigdis Eriksen  
 Louis and Heidi Farano  
 S. Richard Fine  
 Deric Behar and Cynthia Finkelman  
 Bente Svensen Frantz  
 Maiko and Hideya Fujii  
 Robbie Letitia Galindo  
 Damelis Ortega Gamboa and  
 Antonio Gómez Real  
 Eeva-Liisa M. Gehring  
 Lorraine and Vincent Gesualdi  
 James Gillespie and Rebecca Palmer  
 Rachel Ginzberg and Alejandro  
 Rosenberg

Maths A. Graham  
 Richard J. Graving  
 Alan and Kathryn Greenberg  
 Thomas Grischkowsky and Giovanni  
 Trujillo  
 Alden N. Haffner  
 Yas Sadri Harmeyer and Dean  
 Harmeyer  
 Robert and Ursula Haslun  
 Sonja L. Haugen  
 Gary Haugland  
 Bernt Heiberg and William  
 Cummings  
 Robert F. Hendrickson  
 Lillian Hess  
 Bert Holtje  
 Kirsi Honkavuori and Ian Fulton  
 Philipp and Karin Horat  
 Lisbeth and Lawrence Horowitz  
 Robin and Jonathan Howard  
 Sarnia Hayes Hoyt  
 Michele Hu and Yury Omelchenko  
 Jean-Philippe and Carrie Huguet  
 J. W. Hulme, Esq.  
 David and Kathleen Hurty  
 Fredd and Marjorie Isaksen  
 Ulla M. Jenkins  
 Adolf and Elizabeth Jochnick  
 Kristi Planck Johnson  
 Rita G. Johnson  
 Dora Jonassen  
 Stephen Joyce  
 Carl F. Kalnow  
 Michelle and Natalya Kaminer  
 Josh Kantrowitz  
 Jeffrey and Cody Kaye  
 Lilian Kebudi and Jonathan Burate  
 Jeffery Kent  
 Katharine and Justin Kletter  
 Gene and Sharon Ko  
 Jennifer Kouvant and Hans Li  
 Karitas Kristjansdottir  
 Allan and Michelle Krogsgaard  
 Leena and Christer Krook  
 Duane and Susan Kullberg  
 Lars and Marit Kulleseid  
 Mildred C. Kuner

Jamie Lee  
 Un Lee and Ethan Minsker  
 John Leger and Sophie Orloff  
 Montse Soto León and F. Javier  
 Palomo Berrocal  
 Mark and Sara Lewis  
 Kjeld and Gunild Lopdrup  
 Jette Lord  
 Alexandra Lourenco and Andrew  
 Verdasca  
 John and Heather Magnan  
 Marcia K. Manning  
 Helen and Randolph Marshall  
 Peter Martin and Jeanie Tse  
 Robert K. Marzik and Alice M.  
 Caldwell  
 Marlin R. A. Mattson, M.D.  
 David and Anne McCollough  
 Angus McDowell  
 Julia M. McGinnity  
 Kevin and Mary McGroary  
 Kyle and Brianne Medley  
 Thor J. Mednick  
 Turid Meeker  
 Marjorie T. Merriman  
 Alisa and Stan Meyers  
 Poul Micheelsen  
 Birgit L. Minor  
 Joseph Missbrenner  
 Christina Öfverholm Molitèus  
 Donna D. Morgan  
 Mikael Muittari and Stephanie Berry  
 Thomas and Amelia Murphy  
 Morten K. Nicolaisen  
 Lars Nilsen  
 Norsk Høstfest  
 Erik P. Nygaard  
 Rick O'Connell and Marie Mularczyk  
 Mildred Milian Ojea  
 Ólafur and Anna Ólafsson  
 Bent E. Olrik  
 Ronald G. Olsen  
 Pamela F. Olson  
 Janice C. Oresman  
 Rebecca Osborn  
 Enez Paganuzzi  
 Marselis C. Parsons III

Kirsten M. Peckerman  
 Richard W. Pendleton, Jr.  
 Antoinette and Daniel Perschonok  
 Patrick and Melissa Plunkett  
 Martin B. Rapp  
 Rita Rasmussen  
 Caroline Risman  
 Signe A. Rooth  
 Axel and L. Hanko Rosenblad  
 Tim Runion and Vipul Nishawala  
 Dawn Ryan  
 Eliisa Salmi-Saslaw  
 Scandinavian Seminar  
 Christopher Pinkham and Barbara  
 Scarpa-Pinkham  
 Richard and Sandra Schaefer  
 Elizabeth R. Schloss  
 Miriam Schneider and Helene  
 Schneider  
 Ariel and Nichole Schuster  
 Zoe R. Sherwood  
 Scott Shuster and Catherine Fet  
 Gunnvor Simpson  
 James and Anne Sitrick  
 Ulrike Sitter and Richard Scarinci  
 Cornelia Ravenal and Mikael  
 Södersten  
 Sally and Christian R Sonne  
 Edward Steen and Kerry Ann King  
 Lucy Stragapede and Richard Ma  
 Marilyn R. Teppo  
 Edward and Amy Tom  
 Edward Torres  
 Maria Teresa Torres  
 Peter J. R. Trapp  
 Ruth A. Turney  
 Jill Vanelli and Paolo Giardi  
 Anna and Michael Vranos  
 William R. Wade  
 Staffan Wahlander and Pamela J.  
 Posner  
 Grace Kennan Warnecke  
 Inger Wedin  
 Tod and Adrienne Wender  
 David B. and Susan Werner  
 Elizabeth G. Wernqvist and Nancy  
 J. Usic

## ASSOCIATE GROUPS OF THE AMERICAN-SCANDINAVIAN FOUNDATION

The ASF is affiliated with 15 independent regional groups across the U.S. These groups sponsor programs and activities for their local constituents, many of whom are also members of the ASF.

The American Scandinavian Society of New York; New York, NY • The American-Scandinavian Association of the National Capitol Area; Bethesda, MD • Friends of Scandinavia; Raleigh, NC • The American-Scandinavian Foundation - Western Carolinas Associates; Hendersonville, NC • Scandinavian-American Foundation of Georgia; Decatur, GA • The Scandinavian Society of Greater Cincinnati; Cincinnati, OH • Scandinavian Club of Columbus; Columbus, OH • Northwest Iowa Associates of The American-Scandinavian Foundation; Storm Lake, IA • Central Iowa Associates of The American-Scandinavian Foundation; West Des Moines, IA • Twin Cities Associates of The American-Scandinavian Foundation; Northfield, MN • American-Scandinavian Association at Augustana College; Rock Island, IL • American-Scandinavian Foundation Texas Associates; Austin, TX • The American-Scandinavian Foundation of Los Angeles; Los Angeles, CA • The American-Scandinavian Foundation of Santa Barbara; Santa Barbara, CA • The Scandinavian Heritage Foundation; Portland, OR

# FINANCIAL STATEMENTS

## THE AMERICAN-SCANDINAVIAN FOUNDATION Statement of Financial Position June 30, 2013 & 2012

	2013	2012
<b>ASSETS</b>		
Cash and Cash Equivalents	\$456,185	\$402,303
Investments, at fair value	30,422,579	28,488,461
Other Receivables	75,352	40,951
Inventory	99,737	109,249
Prepaid Expenses	90,556	75,478
Fixed Assets	16,905,613	17,431,800
<b>Total Assets</b>	<b>\$48,050,022</b>	<b>\$46,548,242</b>
<b>LIABILITIES &amp; NET ASSETS</b>		
<b>Liabilities:</b>		
Accounts payable and accrued expenses	\$243,121	\$191,690
Deferred revenues	86,178	95,018
Grants payable	607,814	668,803
<b>Total Liabilities</b>	<b>937,113</b>	<b>955,511</b>
<b>Net Assets:</b>		
Operating	599,147	422,357
Board designated	5,783,467	4,930,918
Invested in fixed assets	16,905,613	17,431,800
<b>Total Unrestricted</b>	<b>23,691,459</b>	<b>22,785,075</b>
Temporarily restricted	15,504,567	14,369,216
Permanently restricted	7,979,370	8,438,440
<b>Total Net Assets</b>	<b>47,175,396</b>	<b>45,592,731</b>
<b>Total Liabilities &amp; Net Assets</b>	<b>\$48,050,022</b>	<b>\$46,548,242</b>

The complete financial statements for the periods ended June 30, 2012 and June 30, 2013, as audited by Loeb & Troper, are available from The American-Scandinavian Foundation

**THE AMERICAN-SCANDINAVIAN FOUNDATION**  
**Statement of Activities**  
**June 30, 2013 & 2012**

					Total	
		Unrestricted	Temporarily Restricted	Permanently Restricted	2013	2012
<b>Revenues:</b>						
Contributions		\$669,932	\$464,500		\$1,134,432	\$1,290,186
Special events	\$444,818					
<i>Less direct cost of special events</i>	<i>(111,114)</i>	333,704			333,704	733,845
Membership dues		209,970			209,970	189,996
Investment return designated for current operations		411,768	982,832		1,394,600	1,347,312
Exchange program fees		181,010			181,010	181,530
Advertising and publishing		14,911			14,911	16,274
Ancillary service fees		544,073			544,073	429,100
Gift shop	\$446,010					
<i>Less cost of goods sold</i>	<i>(252,593)</i>	193,417			193,417	182,631
Program fees		52,147			52,147	71,437
Net assets released from restrictions		1,306,705	(1,306,705)			
<b>Total revenues and other support</b>		<b>3,917,637</b>	<b>140,627</b>		<b>4,058,264</b>	<b>4,442,311</b>
<b>Operating expenses:</b>						
Program services						
Training and fellowship programs		1,128,904			1,128,904	1,007,061
Membership		91,151			91,151	75,438
Public Programs		1,541,451			1,541,451	2,052,207
Publications		112,892			112,892	40,819
<b>Total programs services</b>		<b>2,874,398</b>			<b>2,874,398</b>	<b>3,175,525</b>
Supporting services						
Management and general		796,687			796,687	681,265
Fundraising		241,804			241,804	362,766
<b>Total supporting services</b>		<b>1,038,491</b>			<b>1,038,491</b>	<b>1,044,031</b>
<b>Total operating expenses</b>		<b>3,912,889</b>			<b>3,912,889</b>	<b>4,219,556</b>
<b>Results of operations</b>		<b>4,748</b>	<b>140,627</b>		<b>145,375</b>	<b>222,755</b>
Other changes in net assets:						
Investment return in excess of amounts designated for current operations		392,591	894,005		1,286,596	(1,435,315)
Contributions for long-term investment		632,000	12,500	9,180	653,680	374,667
Depreciation expense		(565,473)			(565,473)	(570,314)
Contributions for capital improvements						150,542
Centennial Campaign expense						(325,000)
Fixed asset additions		39,286	(39,286)			
Change in net assets		503,152	1,007,846	9,180	1,520,178	(1,582,665)
<b>Net assets - beginning of year</b>		<b>22,785,075</b>	<b>14,369,216</b>	<b>8,438,440</b>	<b>45,592,731</b>	<b>47,175,396</b>
<b>Net assets - end of year</b>		<b>23,288,227</b>	<b>15,377,062</b>	<b>8,447,620</b>	<b>47,112,909</b>	<b>45,592,731</b>

The complete financial statements for the periods ended June 30, 2012 and June 30, 2013, as audited by Loeb & Troper, are available from The American-Scandinavian Foundation

# STAFF

Full time and office staff as of June 30, 2013

Edward P. Gallagher  
President and Chief Executive Officer

Lynn Carter  
Executive Vice President and Secretary

.....  
Sarah Andrews  
Development and Membership Assistant

Maxine Chapman  
Assistant Director of Security and Fire Safety

Jeff Clayborn  
Director of Security and Fire Safety

Ainslie Durnin  
Development and Membership Manager

Kate Erickson  
Communications

Yvonne Ericson  
Visitor Services

Carl Fritscher  
Fellowships and Grants Officer

David Gonzalez  
Maintenance

Victoria McGann  
Scandinavia House Manager

Stephen McGrath  
Controller

Marie-José O'Keefe  
Scandinavia House Events Coordinator

Tatiana Pashman  
Director of Internships & Training Programs

Kyle Reinhart  
Manager of Educational and Cultural Programs

Lynda Selde  
Director of Development

Lauren Stackpoole  
Internships & Training Programs Administrator

Ariana Tiziani  
Cultural and Educational Programs Coordinator

Matthew Walters  
Director of Fellowships & Grants

Inger Wedin  
Receptionist

Claire Whitman  
Assistant to the President

Laura Winterhalter  
Manager of the Shop @ Scandinavia House

---

## COOPERATING INSTITUTIONS & OFFICES

The ASF's cooperating offices in each of the Nordic countries provide invaluable assistance to and collaboration with the ASF in a number of areas of educational exchange, primarily the Fellowships & Grants and Internships & Training programs. The Foundation acknowledges with gratitude its long-standing affiliation with these organizations.

**The Denmark-America Foundation**  
**Danmark-Amerika Fondet**  
Noerregade 7A, 1. Tv.  
DK-11165 Copenhagen K, Denmark  
Sten Scheibye, Chairman  
Marie Mønsted, Executive Director  
[www.wemakeithappen.dk](http://www.wemakeithappen.dk)

**The League of Finnish-American Societies**  
**Suomi-Amerikka Yhdistysten Liitto**  
Mechelininkatu 10 A  
SF-00100 Helsinki 10, Finland  
H.E. Jukka Valtasaari, Chairman  
Laura Noreila-Manninen, Managing Director  
[www.sayl.fi](http://www.sayl.fi)

**The Icelandic-American Society**  
**Íslensk-ameríska félagið**  
PO Box 320  
IS-121 Reykjavík, Iceland  
Gísli Sigurbjörn Óttarsson, President  
Thórunn Rafnar, Secretary  
[www.iceam.is](http://www.iceam.is)

**The Norway-America Association**  
**Norge-Amerika Foreningen**  
Rådhusgatan 23B  
N-0158 Oslo 2, Norway  
Liv Elin Hjelmeland, President  
Hanne Aaberg, Executive Director  
[www.noram.no](http://www.noram.no)

**The Sweden-America Foundation**  
**Sverige-Amerika Stiftelsen**  
Box 5280  
S-10246 Stockholm, Sweden  
Mariana Burenstam Linder, Chairman  
Anna Rosvall-Stuart, Executive Director  
[www.sweamfo.se](http://www.sweamfo.se)

The ASF also works closely with governmental organizations in Finland and Sweden on its training program. The Foundation is grateful for the important role they play in providing training opportunities for young professionals and students.

**Centre for International Mobility**  
**Kansainvälisen henkilövaihdon keskus**  
PL 343  
SF-00531 Helsinki, Finland  
[www.cimo.fi](http://www.cimo.fi)

**International Employment Office**  
**Arbetsförmedlingen-Utland**  
International Practical Training  
Box 2250  
S-40314 Göteborg, Sweden  
[www.arbetsformedlingen.se](http://www.arbetsformedlingen.se)

# SCANDINAVIA HOUSE FACILITIES & SERVICES

## The Shop @ Scandinavia House

The Shop @ Scandinavia House is one of New York's best sources of imported Nordic goods. It introduces visitors to Scandinavian design and style.

The Shop showcases the leading modern designers from Scandinavia alongside the legends. It offers distinctive home design and tableware, art glass, textiles, luxurious sweaters and accessories, unique jewelry, handmade clogs, and children's items, along with favorite Scandinavian foods and confections.



## Scandinavia House as an Event Venue

While serving as a lively cultural center for Nordic programs presented by The American-Scandinavian Foundation, Scandinavia House is also a popular venue for events hosted by other nonprofits, government offices, corporations, and individuals. These include meetings, conferences, seminars, receptions, luncheons, dinners, film screenings, concerts, and weddings. The revenue generated by rentals provides important support for the operations of Scandinavia House and the ASF.



## Smörgås Chef @ Scandinavia House

Smörgås Chef has managed the restaurant at Scandinavia House since September 2008 as one of its main New York City locations. Serving fine Scandinavian cuisine, Smörgås Chef offers lunch, dinner, and weekend brunch, along with special promotions related to ASF films and concerts. With an authentic custom-designed birch tree installation at its center and café tables and colorful chairs designed by Arne Jacobsen, Smörgås Chef provides diners with a vivid introduction to Nordic fare.

**THE AMERICAN-SCANDINAVIAN FOUNDATION**

Scandinavia House: The Nordic Center in America

58 Park Avenue, New York, NY 10016

t: 212.779.3587 • f: 212.686.1157

[amscan.org](http://amscan.org) • [scandinaviahouse.org](http://scandinaviahouse.org)