

# FELLOWSHIPS AND GRANTS

The ASF Fellowship and Grant Program for study and research is the Foundation's most long-standing program promoting educational and cultural exchange between the United States and Scandinavia. In the first award year in 1912, the ASF provided a total of \$1,900 to seven scholars. By comparison, during the 2003-04 academic year, fellowship and grant funding reached \$699,000, enabling 69 American and Scandinavian fellows to pursue their research, studies and creative projects abroad. And in 2004-05, \$712,000 was awarded to 77 fellows from the U.S. and Nordic countries.

The ASF provides fellowship and grant funding in amounts of up to \$20,000 to students at the graduate level, post-graduate scholars, professionals and artists; awards are made in all fields. During the 2003-05 period, both the American and Scandinavian programs have been marked by ever larger numbers of scholars at the post-doctoral level, in areas ranging from planetary geology to thermodynamics to psychology, journalism, and international affairs. Significant funding also went to projects in the arts, including musical performance, creative writing, and a wide range of the visual and craft arts. A sustained interest in professional programs in business and law has been noted among Scandinavian fellows, while the trend in the American program has been towards research projects in social policy and issues of global concern.

.....

Three ASF visiting lecturers arrived from Sweden and Norway in 2004 to teach at host universities and undertake lecture tours in the United States. Gustavus Adolphus College, Pacific Lutheran University and the University of Iowa were selected to host visiting lecturers in the fields of Sámi studies, peace and conflict resolution, and communication theory, respectively, for the spring semester. A total of \$75,000 was awarded in support of their programs.

.....

In early 2005, the ASF's Board of Trustees approved 78 new American and Scandinavian fellowship and grant candidates for funding totaling over \$730,000, and approved \$100,000 for four new visiting lectureship appointments for the 2005-06 academic year. Information on these awards will be included in the 2005-06 Annual Report.

ASF fellowships and grants are given towards study and research at the graduate, post-graduate or professional level. Projects may be from a few weeks to a full year in length, with award amounts ranging from \$ 1,000 to \$20,000. Applications for the American competition have an annual deadline of November 1st. The application process for the Scandinavian competition is administered directly by the ASF's sister organizations in the Nordic countries, with each organization establishing its own deadlines.

## 2003-04 Awards

### Fellows From Denmark

Candidates recommended by The Denmark-America Foundation (Danmark-Amerika Fondet), Copenhagen

Andersen, Søren, to the University of Southern California  
M.S.-directed study, business. Carl G. and Rikke Fredriksen Barth Fund, \$3,000; Henrik Kauffmann Fund, \$4,000.

Andsager, Gry, to the University of North Carolina/Greensboro  
M.A.-directed study, American studies. Henrik Kauffmann Fund, \$8,000.

Eickhoff, Philip, to the University of Michigan  
M.S.-directed study, business. Helen Lee and Emil Lassen Fund, \$7,000.

Espersen, Carsten, to Trinity International University  
M.A.-directed study, theology. Henrik Kauffmann Fund, \$8,000.

Kyed, Marlene, to Ball State University  
M.S.-directed study, communications. Helen Lee and Emil Lassen Fund, \$8,000.

Pedersen, Lise, to New York University  
Master of Laws-directed study. Helen Lee and Emil Lassen Fund, \$3,000; Hans K. Lorentzen Memorial Fund, \$6,000.

### Fellows To Denmark

Ives, Nicole, from the University of Pennsylvania  
Ph.D.-directed research, social welfare, Danish Red Cross. Helen Lee and Emil Lassen Fund, \$3,000.

Larsen, Astrid, artist from Seattle, Washington  
Visual arts: fire sculpture. Hans K. Lorentzen Memorial Fund, \$3,000.

Pages, Neil Christian, from the State University of New York/Binghamton  
Post-doctoral research, cultural studies, Institute for Nordic Philology, University of Copenhagen. Amanda C. Roleson Fund, \$3,000.

### Fellows From Finland

Candidates recommended by The League of Finnish-American Societies (Suomi-Amerikka Yhdistysten Liitto), Helsinki

Alanko, Reeta, to Tufts University  
M.A.-directed study, law and diplomacy. Thor and Saimi Soderholm Fund, \$7,000.

Kotti, Tiina, to Southwestern Medical Center, University of Texas

Post-doctoral research, molecular genetics. Carl G. and Rikke Fredriksen Barth Memorial Fund, \$4,000; Finnish Fund, \$1,000.

Riutta, Sirkku Satu, to Georgia State University  
Ph.D.-directed study, political science. Finnish Fund, \$7,000.

Väisänen, Misse, to the University of Illinois  
M.S.-directed study, veterinary anesthesiology. Finnish Fund, \$3,000; Jack and Martha McFall Fund, \$4,000.

### Fellows To Finland

Bjork, Stephanie, from the University of Wisconsin/Milwaukee  
Ph.D.-directed research, cultural anthropology, Department of Sociology, University of Helsinki. Finnish Fund, \$11,000; Thor and Saimi Soderholm Fund, \$7,000.

Kivisto, Peter, from Augustana College  
Post-doctoral research, sociology, Department of Sociology, Åbo Akademi University. Carl G. and Rikke Fredriksen Barth Memorial Fund, \$3,000.

### Fellows From Iceland

Candidates recommended by The Icelandic-American Society (Íslensk-ameríska félagid), Reykjavik

Árnason, Ragnar, to Harvard University  
Master of Laws-directed study. Thor Thors Memorial Fund, \$2,500.

Ásgeirsson, Eyjólfur, to Columbia University  
Ph.D.-directed study, industrial engineering. Thor Thors Memorial Fund, \$2,500.

Bjarnadóttir, Margrét, to the Massachusetts Institute of Technology  
Ph.D.-directed study, operations research. Thor Thors Memorial Fund, \$7,000.

Björnsdóttir, Kristín, to North Carolina State University  
Ph.D.-directed study, food science. Charles K. Willey Memorial Fund, \$5,000.

Björnsson, Andri, to the University of Colorado  
Ph.D.-directed study, clinical psychology. Charles K. Willey Fund, \$5,000.

Eliasdóttir, Árdís, to the California Institute of Technology  
Ph.D.-directed study, physics. Charles K. Willey Fund, \$5,000.

Gísladóttir, Karen, to the University of Wisconsin/Madison  
Ph.D.-directed study, literacy studies. Charles K. Willey Fund, \$5,000.

Gylfason, Ármann, to Cornell University  
Ph.D.-directed study, aerospace engineering. Thor Thors Memorial Fund, \$5,000.

Hannesdóttir, Dagmar, to Virginia Polytechnic Institute and State University  
Ph.D.-directed study, clinical child psychology. Thor Thors Memorial Fund, \$6,000; Thor Thors Special Contributions Fund, \$1,000.



Danish Fellow Marlene Kyed spent a semester at Ball State University conducting graduate course work in communication technology.



American Fellow Donald Olson conducted research at the Munch Museum in Norway as part of a study of the astronomical content in Edvard Munch's painting *The Scream*

Tryggvason, Gunnar, to the University of Pennsylvania  
M.B.A.-directed study. Thor Thors Special Contributions Fund, \$7,000.

### Fellows To Iceland

Hamilton, Jonna, from Brown University  
Ph.D.-directed research, biology, Vestmannaeyjar Research Center. Thor Thors Memorial Fund, \$3,000.

Schaer, Harris, from the University of Iceland  
Masters-level study and research, physics, the University of Iceland. Thor Thors Memorial Fund, \$18,000.

### Fellows From Norway

*Candidates recommended by The Norway-America Association (Norge-Amerika Foreningen), Oslo*

Aase, Jannike, to Harvard Business School  
M.B.A.-directed study. King Haakon VII Birthday Fund, \$12,000; Sather Fund, \$3,000.

Blikom, Astrid Marie, to Emerson College  
M.A.-directed study, journalism. Andrew E. and G. Norman Wigeland Fund, \$15,000.

Bodvin, Sunniva, to New York University  
M.F.A.-directed study, theater design. Mathilde Aas Memorial Fund, \$20,000.

Børresen, Marion, to the University of Alaska/Fairbanks  
Ph.D.-directed research, environmental sciences. Haakon Styri Fellowship Fund, \$20,000.

Glad, Birgitta, to New York University  
Master of Laws-directed study. Andrew E. and G. Norman Wigeland Fund, \$20,000.

Gomez Palma, Lene Lothe, to Yale University  
M.Public Health-directed study. Andrew E. and G. Norman Wigeland Fund, \$18,000.

Haavet, Thea, to Sarah Lawrence College  
M.F.A.-directed study, theater. Andrew E. and G. Norman Wigeland Fund, \$15,000.

Hansen, Anders Christian, to the University of California/Berkeley  
Ph.D.-directed study, mathematics. Andrew E. and G. Norman Wigeland Fund, \$17,000.

Jacobsen, Julie, to Columbia University  
M.A.-directed study, human rights. Andrew E. and G. Norman Wigeland Fund, \$5,000.

Log, Tanja, to New York University  
M.B.A.-directed study. King Olav V Fund, \$12,000; Sather Fund, \$3,000.

Øien, Nancy Christine, to Brandeis University  
M.S.-directed study, genetic counseling. Andrew E. and G. Norman Wigeland Fund, \$10,000.

Smith, Ulrik, to Harvard Business School  
M.B.A.-directed study. Andrew E. and G. Norman Wigeland Fund, \$8,000; Mathilde Aas Memorial Fund, \$4,000.

Udgaard, Karen, to Georgetown University  
M.Public Policy-directed study. Johan Jørgen Holst Award, Andrew E. and G. Norman Wigeland Fund, \$20,000.

Wærner, Edle, to the New York Academy of Art  
M.F.A.-directed study, figurative art. Andrew E. and G. Norman Wigeland Fund, \$12,000.

### Fellows To Norway

Aho, Eric, artist from Saxtons River, Vermont  
Visual arts: oil painting. Crown Princess Märtha Friendship Fund, \$3,000.

Olson, Donald, from Southwest Texas State University  
Post-doctoral research, astronomy, Munch Museum. Crown Princess Märtha Friendship Fund, \$3,000.

Radford, Kari, from the University of Rhode Island  
Ph.D.-directed research, nursing, Institute of Nursing Science, University of Oslo. King Olav V Fund, \$5,000.

Rees, Ellen, from Arizona State University  
Post-doctoral research, cultural studies, sites throughout Norway. Crown Princess Märtha Friendship Fund, \$3,000.

Saetnan Eli, from the University of Illinois  
Ph.D.-directed research, ecology, The Norwegian Institute for Nature Research. King Olav V Fund, \$3,000.

Schulz, Jeremy, from the University of California/Berkeley  
Ph.D.-directed research, sociology, Department of Sociology, University of Oslo and the National Institute of Consumer Research. King Olav V Fund, \$17,000.

Sethre-Hofstad, Lisa, from Concordia College  
Post-doctoral research, psychology, Department of Psychology, University of Tromsø. Crown Princess Märtha Friendship Fund, \$15,000; King Olav V Fund, \$3,000.

### Fellows From Sweden

*Candidates recommended by The Sweden-America Foundation (Sverige-Amerika Stiftelsen), Stockholm*

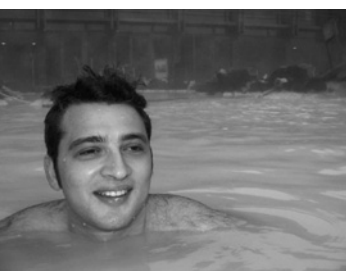
Akamatsu, Koji, to the Parsons School of Design  
Visiting scholar, history of illustration. Bernadotte Fund, \$8,000; Thord-Gray Memorial Fund, \$8,500.

Cronqvist, Henrik, to the University of Chicago  
Ph.D.-directed study, finance. Thord-Gray Memorial Fund, \$15,000.

Forsberg, Anna, to the University of California/Berkeley  
M.S.-directed study, urban design. Thord-Gray Memorial Fund, \$10,000.

Hägglund, Martin, to the State University of New York/Buffalo  
Ph.D.-directed study, comparative literature. Marcus and Amalia Wallenberg Fund, \$15,000.

Johansson, Erika, to Columbia University  
Ph.D.-directed research, architectural conservation. Marcus and Amalia Wallenberg Fund, \$15,000.



American Fellow Harris Schaer visits the Blue Lagoon during his year studying hydrogen fuel cell technology at the University of Iceland.

Käberg, Helena, to the Bard Graduate Center  
Visiting scholar, design. Thord-Gray Memorial Fund, \$15,000.

Lundström, Johan, to the University of Chicago  
Ph.D.-directed research, psychology. Håkon Björnström  
Steffanson Fund: Uppsala University, \$6,000; Thord-Gray  
Memorial Fund, \$9,000.

Olsson, Maria Pernilla, to the New School University  
Ph.D.-directed study, political science. Thord-Gray  
Memorial Fund, \$15,000.

Reuterskiöld, Amélie, to Johns Hopkins University  
M.International Relations-directed study. Thord-Gray  
Memorial Fund, \$20,000.

Salsbäck, Katja, to Columbia University  
M. International Affairs-directed study. Thord-Gray  
Memorial Fund, \$15,000.

Trotta, Jeanette, to the City University of New York  
Graduate Center  
Ph.D.-directed study, theater studies. Håkon Björnström  
Steffanson Fund: Sweden-America Foundation, \$4,000;  
Thord-Gray Memorial Fund, \$12,500.

Wohlfahrt, Johan Caspar, to the University of Minnesota  
M.S.-directed study, dentistry. Thord-Gray Memorial Fund,  
\$19,000.

### Fellows To Sweden

Furuya, Harumi, from Harvard University  
Ph.D.-directed research, comparative government, Center  
for Multi-Ethnic Research, Uppsala University. Thord-Gray  
Memorial Fund, \$13,000.

Johnson, Daniel, from Duke University School of Medicine  
M.D.-directed research, orthopedic surgery, Karolinska  
Institute. Thord-Gray Memorial Fund, \$17,000.

Kiehl, Ermalynn, from the University of Central Florida  
Post-doctoral research, nursing, Department of Nursing,  
Lund University. Selma C. Swanson Fund, \$2,000;  
Thord-Gray Memorial Fund, \$1,000.

Neville, Kristoffer, from Princeton University  
Ph.D.-directed research, art history, Department of Art  
History, Uppsala University. Thord-Gray Memorial Fund,  
\$5,000.

Satterlee, Joel, from Arizona State University  
Ph.D.-directed research, history, The Royal Library,  
Stockholm. Thord-Gray Memorial Fund, \$14,000.

### Fellows to Multi-Country

Gwozdz, Lawrence, from the University of Southern  
Mississippi  
Post-doctoral research, saxophone, Music Information Centers  
of Denmark and Finland. Sven Bernhard Fund, \$3,000.

Hickle, Garth, from the Minnesota Office of Environmental  
Assistance  
Professional research, environmental policy, International  
Institute for Industrial Environmental Economics, Lund Uni-  
versity, and sites in Norway. Crown Princess Märtha Friend-  
ship Fund, \$1,500; Thord-Gray Memorial Fund, \$1,500.

Kewley-Port, Diane, from Indiana University  
Post-doctoral research, speech perception and acoustics, the  
University of Aarhus and the Royal Institute of Technology,



Swedish Fellow Johan  
Caspar Wohlfahrt con-  
ducted research on peri-  
odontal disease at the  
University of Minnesota's  
School of Dentistry.

Stockholm. Thord-Gray Memorial Fund, \$2,000; Amanda C.  
Roleson Fund, \$1,000.

Treib, Marc, from the University of California/Berkeley  
Professional research, landscape architecture, Royal Institute  
of Technology, Sweden, and sites in Denmark, Finland and  
Norway. Carol and Hans Christian Sonne Fellowship Fund,  
\$5,000; Former Fellows Fund, \$4,000; Thord-Gray  
Memorial Fund, \$1,000.

### Visiting Lectureships

*The ASF awards funding to U.S. colleges and universities to  
host Visiting Lecturers from Norway or Sweden for appoint-  
ments of one semester. Lectureships are in the areas of pub-  
lic policy, conflict resolution, health care, environmental stud-  
ies or multiculturalism. The competition has an annual dead-  
line of October 15th.*

Gustavus Adolphus College  
Department of Scandinavian Studies  
in support of hosting Professor Krister Stoor (Department  
of Sámi Studies, Umeå University) as a Visiting Lecturer,  
spring semester 2004. Thord-Gray Memorial Fund,  
\$25,000.

Pacific Lutheran University  
Wang Center for International Programs  
in support of hosting Dr. Steinar Bryn (Human Rights,  
Democracy and Peaceful Conflict Resolution Program,  
Nansenskolen) as a Visiting Lecturer, spring semester  
2004. Andrew E. and G. Norman Wigeland Fund,  
\$25,000.

University of Iowa  
Department of Communication Studies and the  
Obermann Center for Advanced Studies  
in support of hosting Dr. Per-Anders Forstorp (Royal  
Institute of Technology) as a Visiting Lecturer, spring  
semester 2004. Thord-Gray Memorial Fund, \$25,000.

### Translation Prizes

*The ASF recognizes the finest translations of prose or  
poetry by Nordic authors born after 1800 in an annual  
competition, with a deadline each year of June 1st.*

Tucker, Katarina (Madison, WI)  
First Prize for her translation of an excerpt from  
*Jerusalem's Night*, by Swedish novelist Sven Delblanc.  
Thord-Gray Memorial Fund, \$2,000.

Tippins, Britt (Copenhagen, Denmark)  
Leif and Inger Sjöberg Prize (Honorable Mention) for her  
translation of excerpts from *Bonsai* by the Danish novelist  
Kirsten Thorup. Leif and Inger Sjöberg Fund, \$1,000.

## 2004-05 Awards

### Fellows From Denmark

*Candidates recommended by The Denmark-America Foundation (Danmark-Amerika Fondet), Copenhagen*

Bork, Jesper, to the Southern California Institute of Architecture  
M.S.-directed study, architecture. Henrik Kauffmann Fund, \$8,500.

Christensen, Annette, to Suffolk University  
M.S.-directed study, finance. Helen Lee and Emil Lassen Fund, \$8,500.

Jørgensen, Elin, to the University of California/Davis  
M.S.-directed study, veterinary medicine. Helen Lee and Emil Lassen Fund, \$5,000; Henrik Kauffmann Fund, \$3,500.

Lund, Henrik, to Tufts Medical School  
M.S.-directed research, molecular biology and chemistry. Henrik Kauffmann Fund, \$9,500.

Skrøjer, Morten, to Washington and Lee University  
Master of Laws-directed study. Helen Lee and Emil Lassen Fund, \$8,500.

Wejp-Olsen, Michael, to the University of Chicago  
Master of Laws-directed study. Henrik Kauffmann Fund, \$8,500.



*American Fellow Linda Fair conducted doctoral research on refugees living in Denmark at the Danish National Institute of Social Research.*

### Fellows To Denmark

Fair, Linda, from Rutgers University  
Ph.D.-directed research, human geography, Danish National Institute of Social Research and the Academy for Migration Studies in Denmark, Aalborg University. Edith Coulter Fund, \$14,000; Carol and Hans Christian Sonne Fellowship Fund, \$4,000.

Fishbaugh, Kathryn, from the International Space Science Institute, Bern, Switzerland  
Post-doctoral research, planetary geology, Niels Bohr Institute, University of Copenhagen. Amanda C. Roleson Fund, \$3,000.

Hollowell, Julie, guest curator, Princeton University Art Museum  
Exhibition preparation: archaeology, Danish National Museum. Carl G. and Rikke Fredriksen Barth Memorial Fund, \$3,000.

Thompson, Anthony, visual artist from New York, New York  
Visual arts: oil painting. Edith Coulter Fund, \$3,000.

Usher, Bethany, from the State University of New York/Potsdam  
Post-doctoral research, archaeology, Anthropological DataBase Odense University (ABDOU), University of Southern Denmark. Amanda C. Roleson Fund, \$3,000.

Westfall, Joseph, from Boston College  
Ph.D.-directed research, philosophy, Søren Kierkegaard Research Center. Amanda C. Roleson Fund, \$3,000.

### Fellows From Finland

*Candidates recommended by The League of Finnish-American Societies (Suomi-Amerikka Yhdistysten Liitto), Helsinki*

Jyväsjarvi, Mari, to Harvard University  
Ph.D.-directed study, religion. Jack and Martha McFall Fund, \$5,000. Thor and Saimi Soderholm Fund, \$1,000.

Salminen, Justin, to the University of California/Berkeley  
Post-doctoral research, applied thermodynamics and electrochemistry. Carl G. and Rikke Fredriksen Barth Fund, \$4,000.

Tähtinen, Lauri, to Harvard Divinity School  
M.Theological Studies-directed study. Finnish Fund, \$8,500.

Väänänen, Lotta, to the University of California/Berkeley  
Ph.D.-level study, economics. Thor and Saimi Soderholm Fund, \$7,000; Finnish Fund, \$1,500.

### Fellows To Finland

Holmes, Charlotte, from Pennsylvania State University  
Creative writing; site visits to art museums in Helsinki. Thor and Saimi Soderholm Fund, \$3,000.

Howell, Katherine, from the San Francisco Conservatory of Music  
Music: voice. Sven Bernhard Fund, \$5,000.

Myntti, Cynthia, from Yale University  
Professional research, architecture, Helsinki University of Technology. Finnish Fund, \$8,000; Jack and Martha McFall Fund, \$5,000; Thor and Saimi Soderholm Fund, \$5,000.

### Fellows From Iceland

*Candidates recommended by The Icelandic-American Society (Islensk-ameríska félagid), Reykjavik*

Breidfjörð, Huldar, to New York University  
M.F.A.-directed study, filmmaking and directing. Charles K. Willey Fund, \$3,000; Thor Thors Memorial Fund, \$2,000.

Fridriksson, Jóel, to the Massachusetts Institute of Technology  
Ph.D.-directed study, physics. Thor Thors Memorial Fund, \$5,000.

Gudbrandsson, Gudmundur, to Yale University  
M.Environmental Management-directed study. Thor Thors Memorial Fund, \$5,000.

Gudmundsson, Kristján, to the California Institute of Technology  
Ph.D.-directed study, mechanical engineering. Charles K. Willey Memorial Fund, \$2,500; Thor Thors Memorial Fund, \$2,000.

Jochumsdóttir, Jóhanna, to Rutgers University  
Ph.D.-directed study, women's and gender studies. Thor Thors Special Contributions Fund, \$5,000.

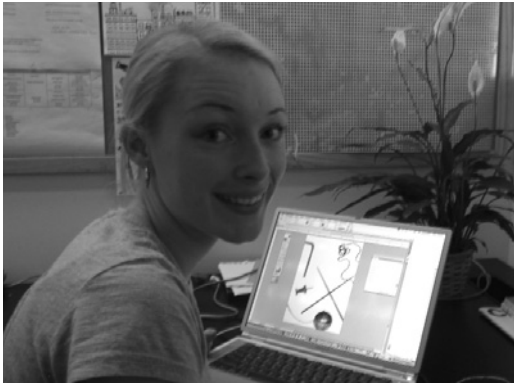
Jónsdóttir, María, to Columbia University  
M.International Affairs-directed study. Thor Thors Special Contributions Fund, \$5,000.

Ólafsson, Kjartan Orn, to Harvard Business School  
M.B.A.-directed study. Thor Thors Memorial Fund, \$4,000.

Sigurjónsson, Styrmir, to Stanford University  
Ph.D.-directed study, electrical engineering. Thor Thors Special Contributions Fund, \$2,500.

Steingrimsdóttir, Herdís, to Columbia University  
Ph.D.-directed study, economics. Thor Thors Special Contributions Fund, \$1,500; Charles K. Willey Fund, \$1,000.

Thórarinnsson, Geir, to Princeton University  
Ph.D.-directed study, classics. Charles K. Willey Fund, \$2,500.



Norwegian Fellow *Sunniva Djupedal* was enrolled in an M.F.A. program in design at the *School of Visual Arts*.

### Fellows To Iceland

Maher, Ruth, from The Graduate Center, City University of New York  
Ph.D.-directed research, anthropology, Icelandic Institute of Archaeology. Thor Thors Memorial Fund, \$18,000.

### Fellows From Norway

*Candidates recommended by The Norway-America Association (Norge-Amerika Foreningen), Oslo*

Bakken, Marita, to the University of Illinois/Chicago  
M.A.-directed study, political science. Andrew E. and G. Norman Wigeland Fund, \$10,000.

Bryhn, Ida, to the New England Conservatory of Music  
M.Music-directed study, viola performance. Andrew E. and G. Norman Wigeland Fund, \$10,000.

Djupedal, Sunniva, to the School of Visual Arts  
M.F.A.-directed study, graphic design. Andrew E. and G. Norman Wigeland Fund, \$14,000.

Gulbrandsen, Tonje, to Columbia University  
M.B.A.-directed study. King Haakon Birthday Fund, \$15,000.

Hals, Johanna, to Alliant University/Los Angeles  
Ph.D.-directed study, clinical psychology. Norway House Foundation, \$10,000.

Hirsch, Lars-Ruben, to Cornell University  
M.B.A.-directed study. Andrew E. and G. Norman Wigeland Fund, \$14,000.

Høyvik, Anita, to Columbia University  
M.A.-directed study, American studies. Sather Fund, \$16,000.

Kiss, Kata, to Columbia University  
M.Public Administration-directed study. Mathilde Aas Memorial Fund, \$15,000.

Kvidal, Trine, to the University of Utah  
Ph.D.-directed study, communication. Andrew E. and G. Norman Wigeland Fund, \$6,000.

Lundaas, Leif, to the Massachusetts Institute of Technology  
M.B.A.-directed study. Andrew E. and G. Norman Wigeland Fund, \$10,000.

Paus, Marcus, to the Manhattan School of Music  
M.Music-directed study, composition. Mathilde Aas Memorial Fund, \$15,000.

Pedersen, Ole-Petter, to the University of Massachusetts/Boston  
Post-doctoral research, oceanography. Haakon Styri Fellowship Fund, \$10,000.

Prestegård, Linda, to the University of Denver  
M.A.-directed study, international and intercultural communication, Andrew E. and G. Norman Wigeland Fund, \$15,000.

Ramberg, Jan Egil, to Northwestern University  
M.B.A.-directed study. Andrew E. and G. Norman Wigeland Fund, \$10,000.

Restad, Hilde, to the University of Virginia  
Ph.D.-directed study, American studies. King Olav V Fund, \$6,000.

Tan, Karin, to Harvard University  
Ph.D.-directed research, philosophy. Andrew E. and G. Norman Wigeland Fund, \$7,000.

Tenzin, Riga, to Columbia University  
M.International Affairs-directed study. Johan Jørgen Holst Award, Andrew E. and G. Norman Wigeland Fund, \$20,000.

Wærner, Edle, to the New York Academy of Art  
M.F.A.-directed study, figurative sculpture. Andrew E. and G. Norman Wigeland Fund, \$10,000.

### Professional Development Grants

Dalen, Monica, Professor, University of Oslo  
Post-doctoral research in international adoption, sites in Boston. Andrew E. and G. Norman Wigeland Fund, \$5,000.

Thomsen, Erik, guidance counselor, Stavanger, Norway  
Professional research in vocational/educational counseling, Marshall University. Andrew E. and G. Norman Wigeland Fund, \$3,000.

### Fellows To Norway

Otero-Pailos, Jorge, from Columbia University  
Post-doctoral research, historic preservation, fieldwork throughout Norway. King Olav V Fund, \$3,000.

Talcott, Lori, jewelry artist from Seattle, Washington  
Visual arts: metal design, National College of the Arts, Telemark University College and the Norwegian Folk Museum. Crown Princess Märtha Friendship Fund, \$18,000.

Zagar, Monika, from the University of Minnesota  
Post-doctoral research, Norwegian literature, Oslo University Library, Resistance Museum Archives and the University of Tromsø. Alice and Corrin Strong Fund, \$8,000.

### Fellows From Sweden

*Candidates recommended by The Sweden-America Foundation (Sverige-Amerika Stiftelsen), Stockholm*

Almgren, Sara, to George Washington University  
M.A.-directed study, anthropology. Bernadotte Fund, \$7,000; Thord-Gray Memorial Fund, \$13,000.

American Fellow *Steven Lyon* conducted doctoral research on water system management in Sweden.





American Fellow Tomas Höök conducted post-doctoral research on Baltic Sea fishery management at Stockholm University.

Andersson, Staffan, to Harvard Business School  
M.B.A.-directed study. Håkon Björnström Steffanson Fund:  
Sweden-America Foundation, \$4,000; Thord-Gray Memorial  
Fund, \$6,000.

Bjursell, Johan, to George Mason University  
Ph.D.-directed study, computational finance. Marcus and Amalia  
Wallenberg Fund, \$18,000.

Grund, Maria, to New York University  
M.F.A.-directed study, dramatic writing. Marcus and Amalia  
Wallenberg Fund, \$6,000; Thord-Gray Memorial Fund, \$14,000.

Johansson, Perry, to Columbia University  
Post-doctoral research, history. Thord-Gray Memorial Fund,  
\$15,000.

Karlsson, Helena, to the University of Minnesota  
Ph.D.-directed study, Scandinavian studies. Thord-Gray Memorial  
Fund, \$5,000.

Larsén, Karin, to Purdue University  
Ph.D.-directed study, agricultural economics. Thord-Gray  
Memorial Fund, \$5,000.

Nilsson, Vivian, to The Graduate Center, City University of  
New York  
Ph.D.-directed study, political science. Thord-Gray Memorial  
Fund, \$15,000.

Ögren, Anders, to New York University  
Post-doctoral research, economic history. Marcus and Amalia  
Wallenberg Fund, \$12,000.

Söderström, Johan, to the University of California/Berkeley  
Ph.D.-directed research, physics. Håkon Björnström Steffanson  
Fund: Uppsala University, \$10,000; Thord-Gray Memorial Fund,  
\$2,000.

Zetterholm, Karin to Yale University  
Post-doctoral research, Jewish studies. Thord-Gray Memorial  
Fund, \$12,500.

Zetterholm, Magnus to Yale University  
Post-doctoral research, religious studies. Thord-Gray Memorial  
Fund, \$12,500.

### Fellows To Sweden

Blum, Elizabeth, from the University of Pittsburgh  
Post-doctoral research, cognitive psychology, Karolinska Institute.  
Thord-Gray Memorial Fund, \$14,000; Former Fellows Fund,  
\$3,000.

Hart, Laurel, musician from Ithaca, New York  
Music: fiddle, courses and festivals throughout Sweden and  
Norway. Selma C. Swanson Fund, \$2,000; Alice and Corrin  
Strong Fund, \$1,000.

Höök, Tomas, from the University of Michigan  
Post-doctoral research, ecology, Department of Systems Ecology,  
Stockholm University. Thord-Gray Memorial Fund, \$18,000.

Jessup, David, from the University of Washington  
Ph.D.-directed research, history, Center for Multiethnic Research,  
Uppsala University. Thord-Gray Memorial Fund, \$18,000.

Lyon, Steven, from Cornell University  
Ph.D.-directed research, environmental engineering, Department  
for Environmental Assessment, Uppsala University. Thord-Gray  
Memorial Fund, \$14,500.

Neuman, Michelle, from Teachers College, Columbia University  
Ph.D.-directed research, early childhood education, Institute of  
International Education, Stockholm University. Thord-Gray  
Memorial Fund, \$3,000.

Schofer, Susan, from the California Institute of Technology  
Post-doctoral research, inorganic chemistry, Department of  
Organic Chemistry, Stockholm University. John G. Bergquist  
Fund, \$2,000.

Stockenström, Tone, from Columbia College  
Visual arts: photography. Former Fellows Fund, \$3,000.

Szalcer, Eszter, from the State University of New York/Albany  
Post-doctoral research, Swedish literature, Strindberg Museum,  
Strindberg Archives of the Royal Library. Thord-Gray Memorial  
Fund, \$3,000.

Tiedemann, Sarah, from the New England Conservatory of Music  
Music: flute performance, Royal College of Music. Thord-Gray  
Memorial Fund, \$11,000.

Young, Nina, from the School of Visual Arts  
Visual arts: photography. Thord-Gray Memorial Fund, \$3,000.

### Translation Prizes

Norlen, Paul (Seattle, WA)  
First Prize for his translation of an excerpt from *A Toast to Your  
Ashes: The Life of the Poet Bellman from Beginning to End* by the  
Swedish author Ernst Brunner. Thord-Gray Memorial Fund,  
\$2,000.

Lansford, Ingrid (Georgetown, TX)  
Leif and Inger Sjöberg Prize (Honorable Mention) for her transla-  
tion of excerpts from *Love Stories from Many Lands*, by the  
Danish author Meir Aron Goldschmidt. Leif and Inger Sjöberg  
Fund, \$1,000.